



CAMDEN CHASE

Dollis Road, Finchley, N3 1RB

Offers in excess of £750,000

🛏 4 🚿 2 🛋 2



A chain free, halls-adjoining semi-detached family home built in the Victorian era, with four double bedrooms (plus study), two bathrooms, two reception rooms and kitchen dining room. Centrally located, Finchley Central Underground station and Ballards Lane's amenities are just 0.25 miles away with popular St Mary's and Moss Hall schools only a little further afield.

This home provides an opportunity for the next owners to acquire more than 1,800sqft of blank canvas living space. Retaining lots of character features such as cornicing, ceiling roses and fireplaces "Hatherley Villas" requires general redecoration throughout. The roof was replaced in 2025 and the boiler installed in 2014.

On the ground floor you have two through reception rooms and a kitchen dining room to the rear, where there is also a separate utility room and w/c. You also have access to the cellar.

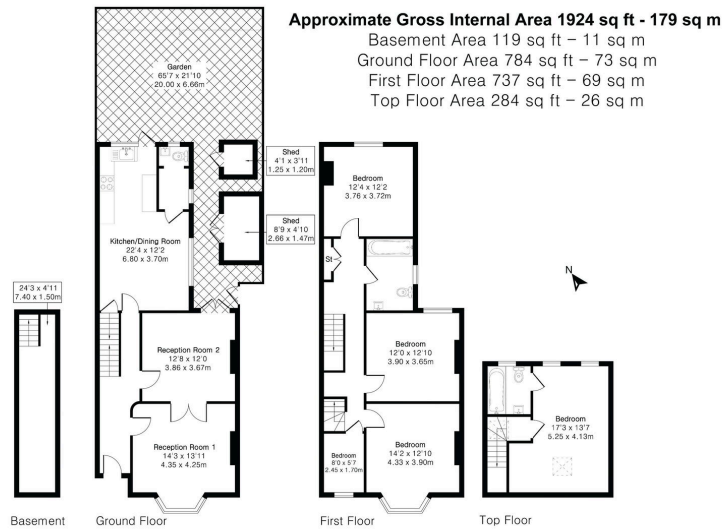
At first floor level, there are three double bedrooms, a study and a family bathroom. There is also access to loft storage.

The fourth double bedroom and second bathroom are located on the second floor. More eaves storage is available here.

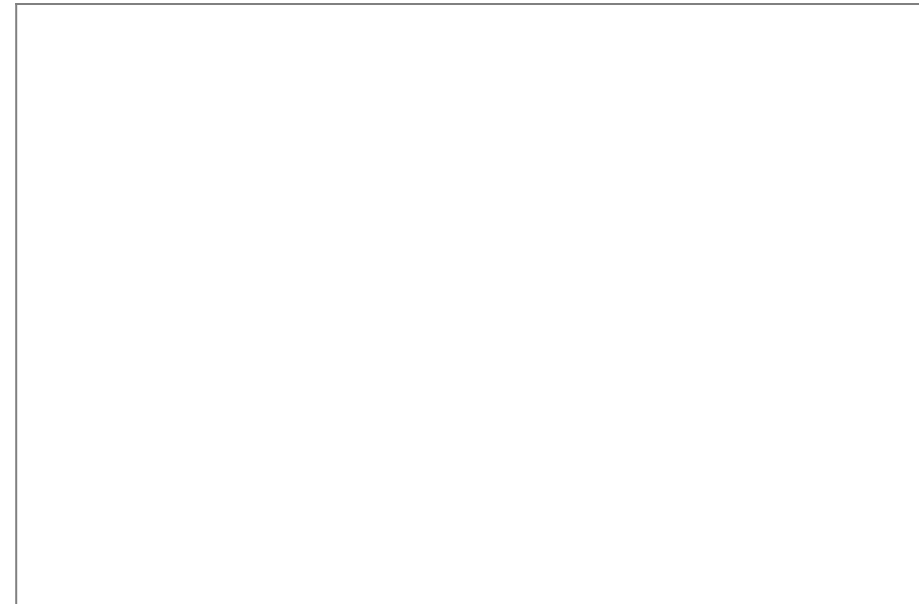
Dollis Valley Greenwalk is just a stone's throw away, which will take you all the way to the Hampstead Heath extension. Road links close by include the A406 North Circular, A41 and M1. There are many sports facilities close by including Finchley Lawn Tennis club, Finchley Manor Tennis, Squash & Health club, Finchley and Mill Hill golf courses, Frith Manor and The London Equestrian Centres and a David Lloyd Health Club.

Council Tax Band: F





- Renovation opportunity
- Victorian character features
- Dollis Valley Greenwalk & Victoria Park close by
- Chain free
- Catchment area of popular local nursery and primary schools
- M1, A406 & A41 road links
- 4 Double bedrooms + study
- Scope to extend (subject to necessary consents)
- 2 Bathrooms (1 ensuite)
- Finchley Central & Mill Hill East tube stations (Northern Line)



CAMDEN CHASE