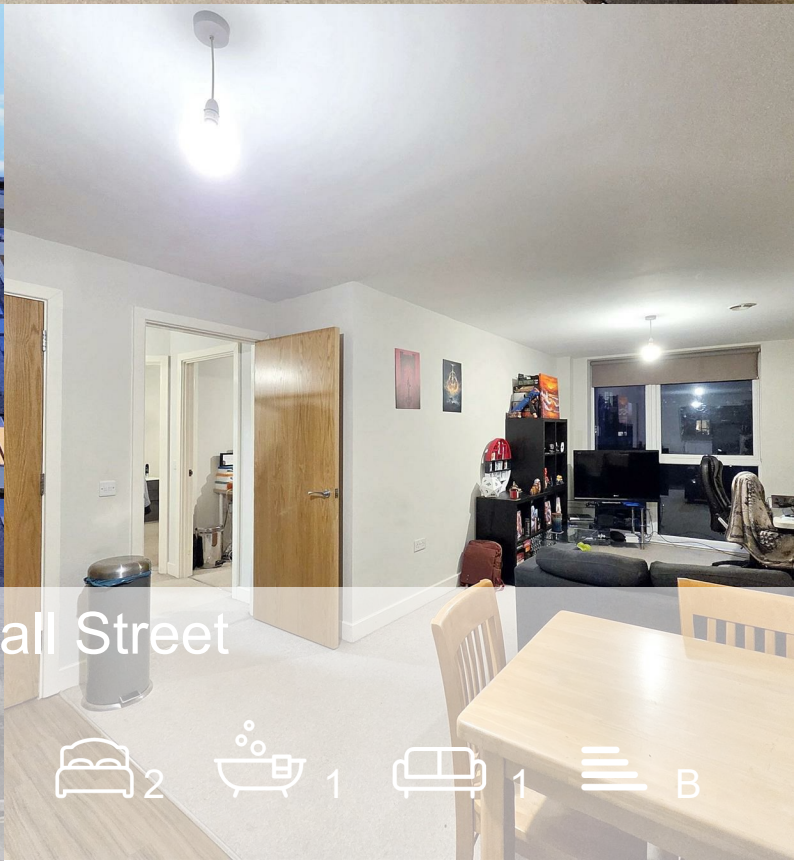




235 Bridgewater Point Worrall Street

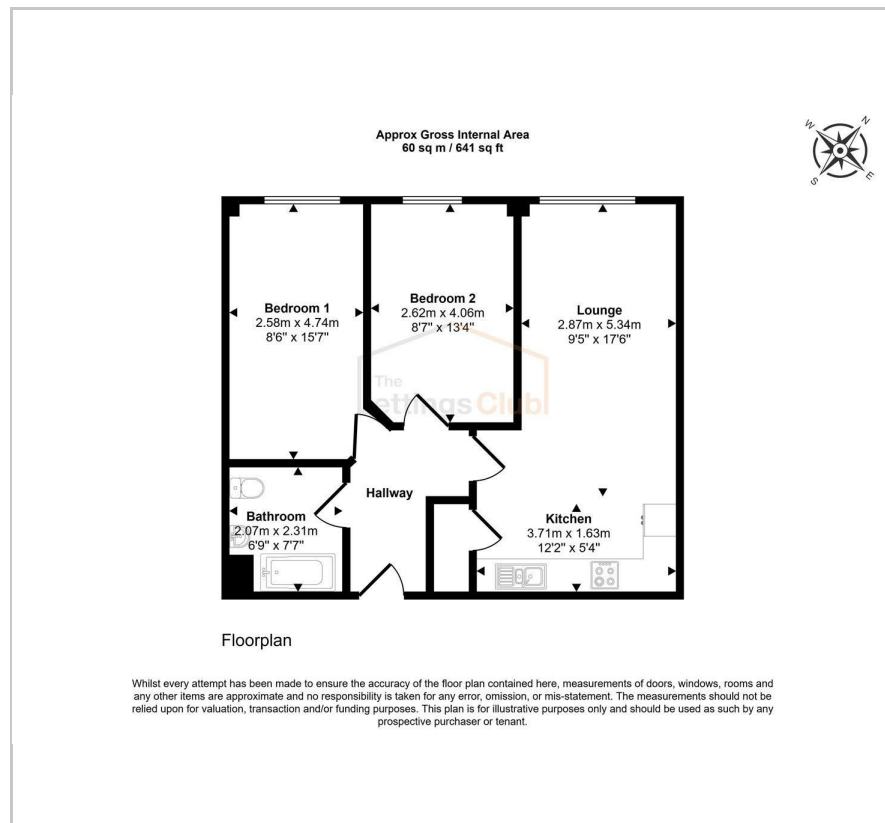
, Salford, M5 4YA

Asking price £200,000

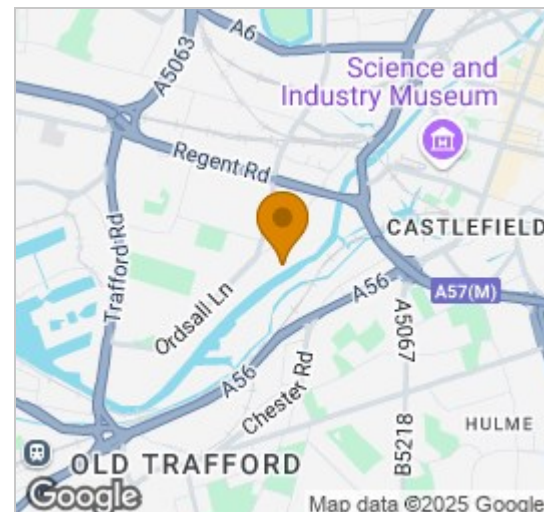




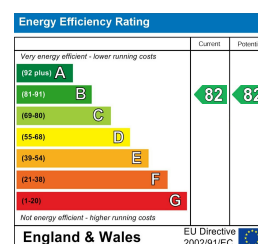
## Floor Plan



## Area Map



## Energy Efficiency Graph



## Viewing

Please contact our Tenanted PS Office on if you wish to arrange a viewing appointment for this property or require further information.

- Tenanted Investment property
- Allocated Parking included
- 5.5% NET yield
- Walking distance to a tram station
- Communal roof garden
- Two bedrooms
- Sold furnished
- Easy access into Manchester city centre
- Easy access into MediaCity UK
- Invest today

ATTENTION INVESTORS - PURCHASE THIS READY MADE INVESTMENT PROPERTY!

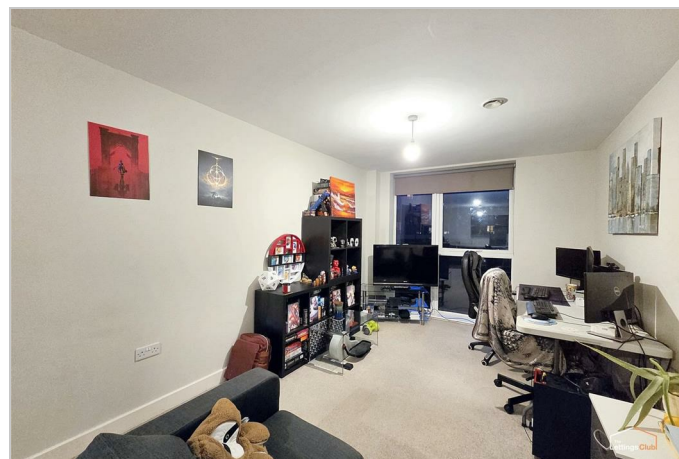
Tenanted Property Sales are delighted to offer to market this fantastic tenanted two bedroom apartment in this modern development on the banks of the River Irwell, Manchester City Centre. Providing super-convenient access into both the City centre as well as the district of MediaCityUK, the development benefits from being perfectly located for Manchesters thriving economy. The apartment includes added benefits of a furniture pack as well as one allocated parking space!

A look inside the property:

The apartment briefly comprises; Entrance hallway leading to the open plan kitchen // living space with floor to ceiling windows, utility cupboard housing the washing machine, master bedroom, a further double bedroom and good sized family bathroom. There is 1 allocated parking space included with this apartment.

Facilities on-site:

- On-site parking
- Bike store
- Roof garden



These particulars, whilst believed to be accurate are set out as a general outline only for guidance and do not constitute any part of an offer or contract. Intending purchasers should not rely on them as statements of representation of fact, but must satisfy themselves by inspection or otherwise as to their accuracy. No person in this firms employment has the authority to make or give any representation or warranty in respect of the property.

Top Floor, The Refuge Building 9-11 Sunbridge Road, Bradford, BD1 2AZ  
Tel: Email: [info@tenantedps.com](mailto:info@tenantedps.com) <https://www.thelettingsclub.com>