

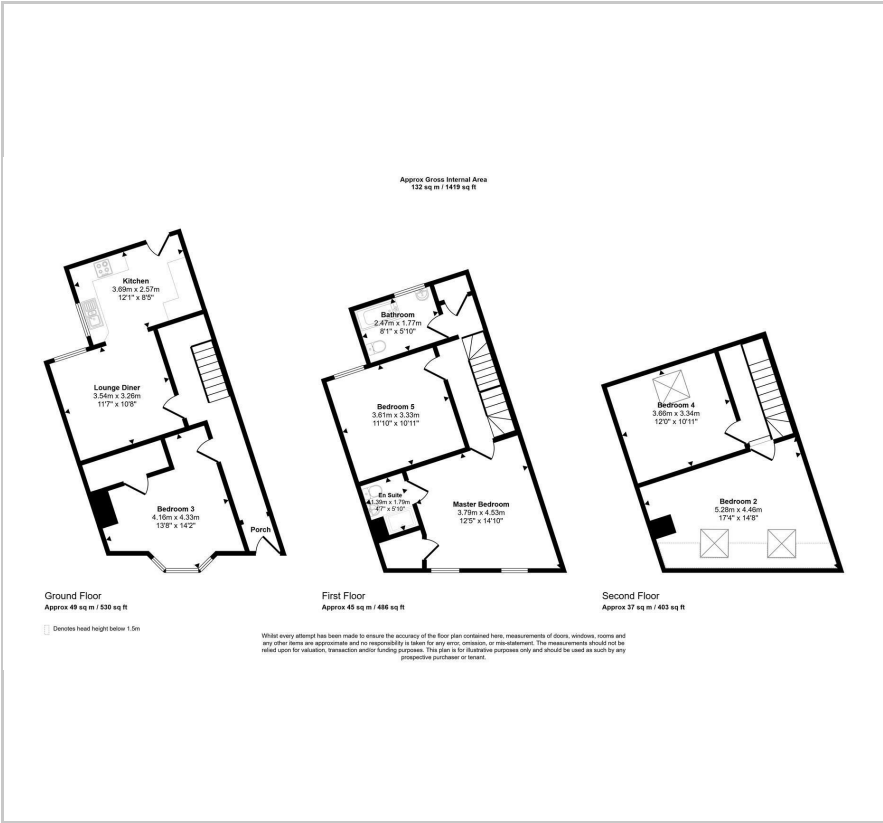


(HMO) 267 Edge Lane

Fairfield, Liverpool, L7 9LB

Offers in the region of £295,000

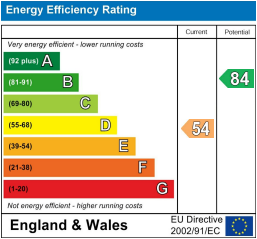
Floor Plan



Area Map



Energy Efficiency Graph



Viewing

Please contact our Tenanted PS Office on if you wish to arrange a viewing appointment for this property or require further information.

- Tenanted investment property
- Fully let
- Five bedrooms
- Sold furnished
- Freehold
- HMO
- Gross income of over £30,000
- 2 ensuites
- Hands off investment
- Invest today



ATTENTION INVESTORS - PURCHASE THIS READY MADE INVESTMENT PROPERTY!

Offered to the market as a ready-made investment, this converted HMO property presents a fantastic opportunity to acquire an up and running HMO property investment. The property is well located within a short commute to a variety of locations in Liverpool as well as the Citys universities. The property has a modern feel throughout and benefits from an easy to maintain garden to the rear.

This style of investment is high in demand in the and provides a great opportunity for an established investor to expand their portfolio.

A look inside the property:

The property briefly comprises: To the ground floor; Entrance hallway with access to mailboxes and fire alarm panel, lounge, kitchen, 1 en-suite bedroom, utility area and access to the garden.

To the first floor, 2 double bedrooms (1 ensuite), and the communal bathroom;

To the second floor, 2 further double bedrooms.



These particulars, whilst believed to be accurate are set out as a general outline only for guidance and do not constitute any part of an offer or contract. Intending purchasers should not rely on them as statements of representation of fact, but must satisfy themselves by inspection or otherwise as to their accuracy. No person in this firms employment has the authority to make or give any representation or warranty in respect of the property.

Top Floor, The Refuge Building 9-11 Sunbridge Road, Bradford, BD1 2AZ
Tel: Email: info@tenantedps.com https://www.thelettingsclub.com