



The Sauton

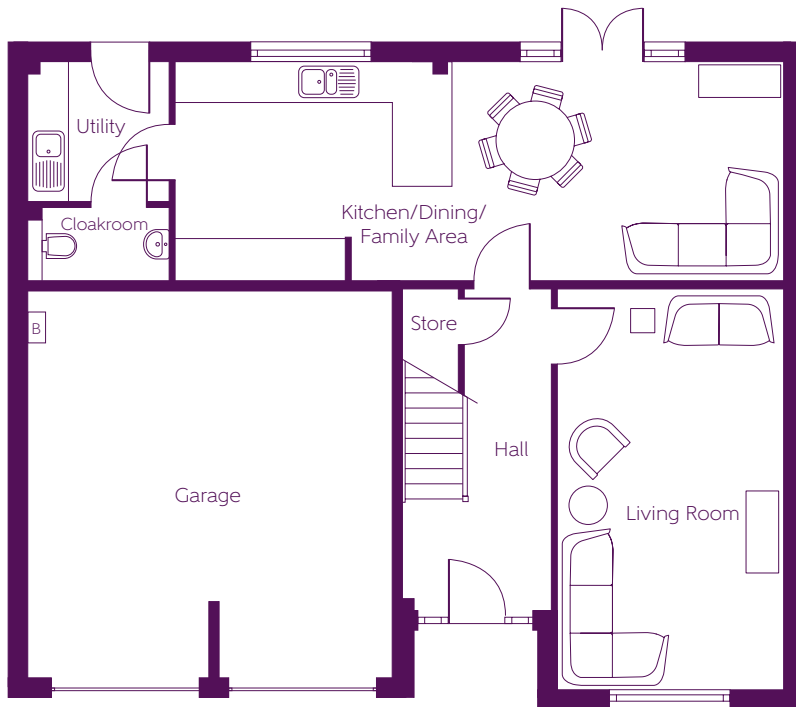
5 BEDROOM HOME

ashberryhomes.co.uk

Ashberry
Homes

The Sauton

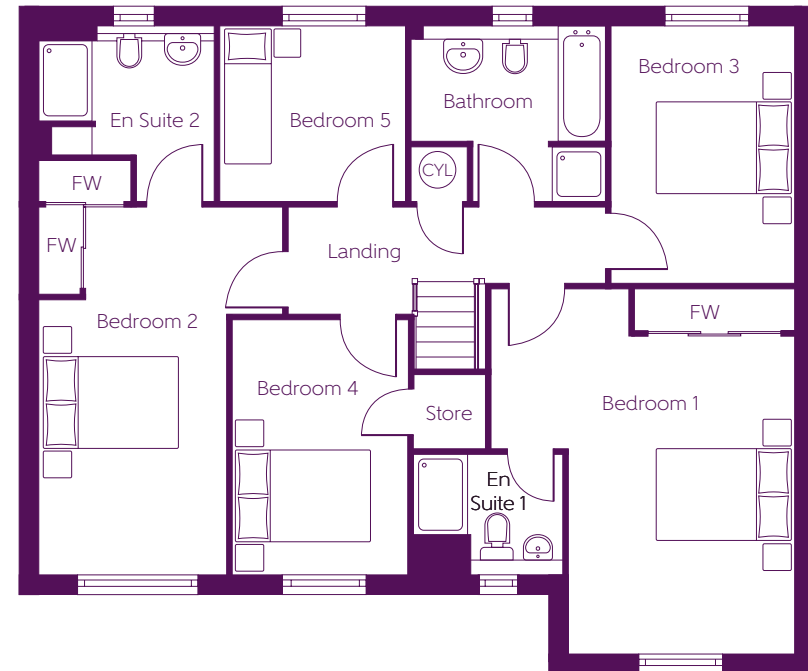
5 BEDROOM HOME



Ground Floor

**Kitchen/Dining/
Family Area** 9.132m x 3.272m 30'0" x 10'9"

Living Room 6.033m x 3.381m 19'10" x 11'1"



First Floor

Bedroom 1 5.446m x 4.547m 17'10" x 14'11"
(max) (max) (max) (max)

Bedroom 2 5.502m x 2.802m 18'1" x 9'2"
(max) (min) (max) (min)

Bedroom 3 3.848m x 2.739m 12'8" x 8'12"

Bedroom 4 3.809m x 2.625m 12'6" x 8'7"

Bedroom 5 2.775m x 2.619m 9'1" x 8'7"

B - Boiler FW - Fitted wardrobe CYL - Hot water cylinder

Furniture arrangements are for illustrative purposes only. Items are not included, nor to scale.

The items shown in this key may be subject to change, and positions could vary from those indicated on this floorplan. Please refer to Sales Advisor for details of your selected plot. Computer generated image shown overlaid. External finishes, landscaping and configuration may vary from plot to plot. Please refer to Sales Advisor for further details. All dimensions are approximate and should not be used for carpet sizes, appliance spaces or furniture. We operate a policy of continuous improvement and individual features such as kitchen and bathroom layouts, doors, windows, garages and elevational treatments may vary from time to time. Consequently these particulars should be treated as general guidance only and do not constitute a contract, part of a contract or a warranty.