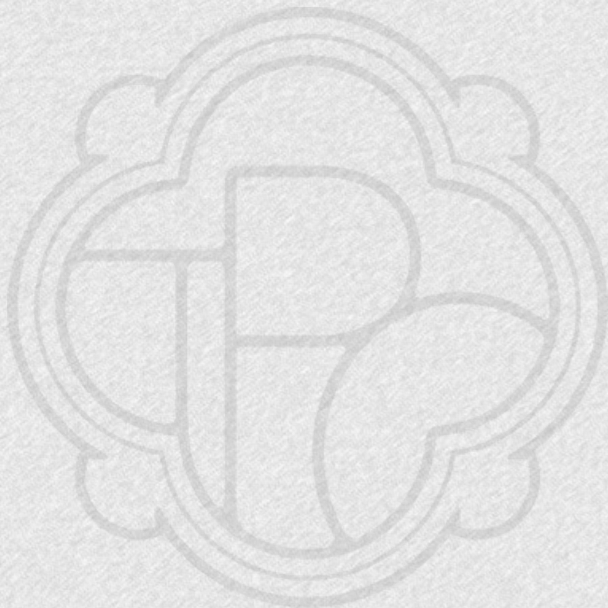


# SUNDIALS



SUNDIALS  
ST. GEORGES HILL



£5,000,000

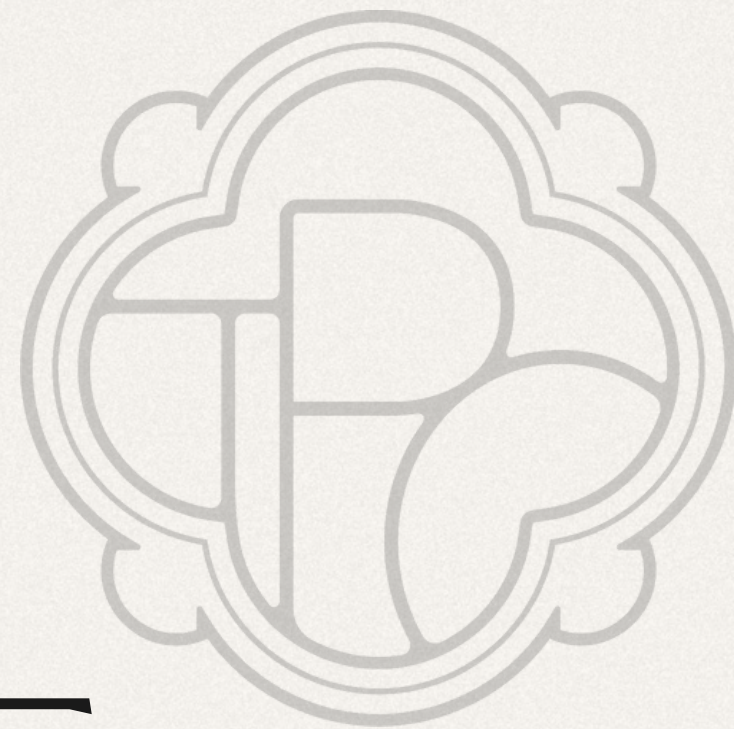
ST. GEORGES HILL



SOUTH ROAD, ST. GEORGES HILL



# WELCOME HOME



A magnificent family residence with golf course views in a prime position on the world-renowned St George's Hill private estate.

Located in one of the most prestigious enclaves of St George's Hill, this beautifully balanced family home offers exceptional accommodation, seamlessly blending classical elegance with contemporary comfort.

Guide Price- £5,000,000



THE PRIVATE OFFICE : REAL ESTATE

THE PRIVATE OFFICE : REAL ESTATE





# ACCOMMODATION

Approached via a sweeping gravel driveway, the property opens to a grand circular forecourt with ample parking, complemented by a substantial triple garage.

Upon entering, you are welcomed into an impressive reception hall, where a graceful sweeping staircase sets the tone for the refined interiors. To the right, a bespoke-fitted study provides an ideal home office environment. The elegant drawing room, defined by two grand pillars, flows through to the formal dining room, both with double doors opening onto the landscaped rear gardens, creating a wonderful setting for entertaining.

The heart of the home is the expansive open-plan kitchen and breakfast room, which leads into a spectacular double-height garden room. Floor-to-ceiling windows flood the space with natural light and frame views of the grounds, making this a stunning yet practical hub for family life. Adjoining this space is a relaxed family room, ideal for more informal gatherings.

A secondary entrance hall houses the utility room and a separate changing room, with stairs rising to a self-contained one-bedroom annexe, perfect for staff, guests, or multi-generational living.







## ACCOMMODATION

Upstairs, the principal bedroom suite is a true retreat, complete with a bespoke dressing room and a private balcony overlooking the gardens. Three further bedroom suites are found on this floor, two featuring walk-in wardrobes.

The second floor provides flexible accommodation, including a further bedroom suite, an additional bedroom, a media room, a family bathroom, and a generous storage room





## GARDENS

Externally, the grounds have been meticulously landscaped with year-round interest in mind. Backing directly onto the golf course, the gardens enjoy both open views and a high degree of privacy, thanks to mature screening.

A picturesque woodland area, complete with stream and ornamental bridge, adds a charming natural dimension. Within this section of the garden is a level area that has been prepped and wired for use as an outdoor gym.

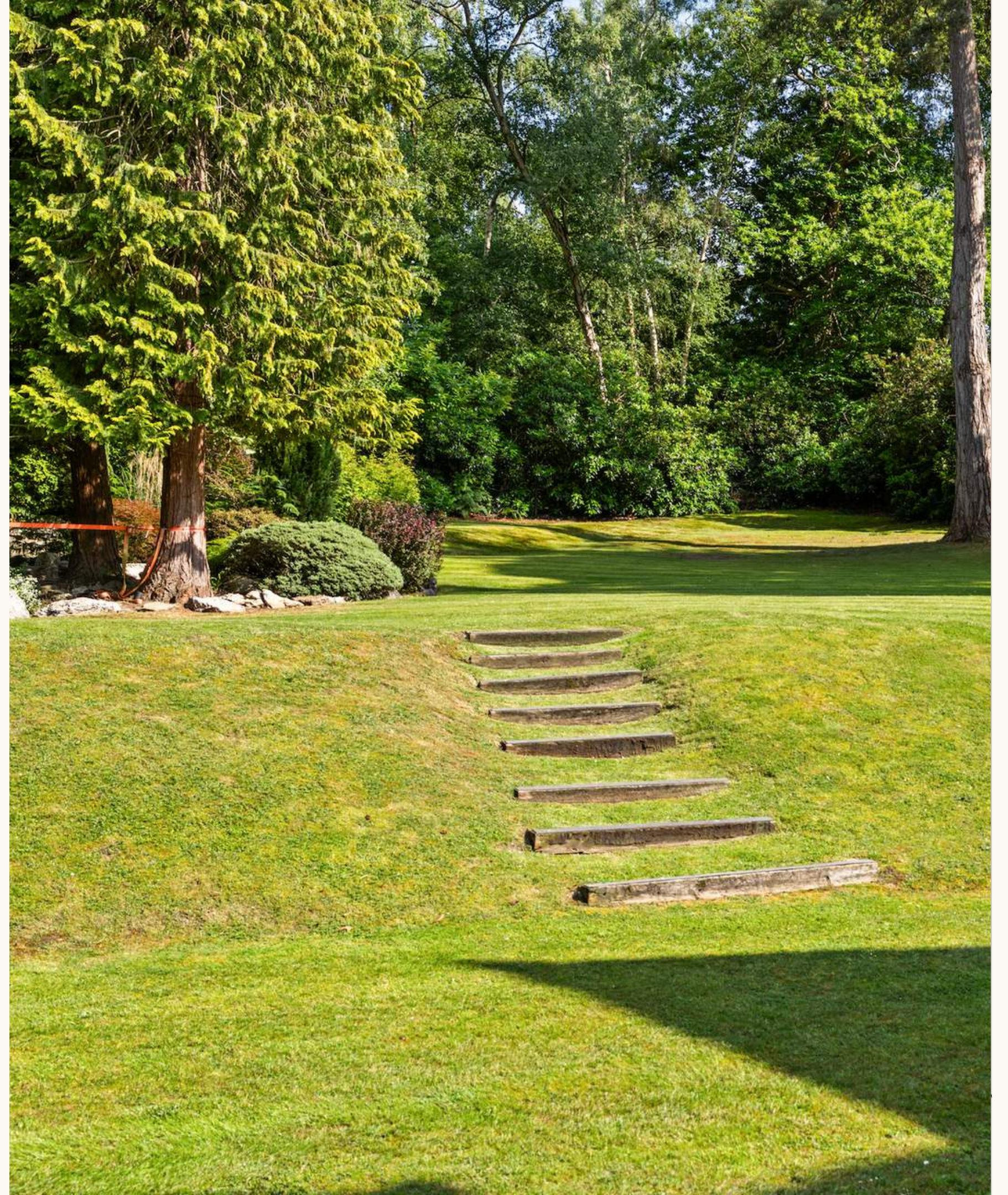


# LOCATION

St George's Hill - A private estate like no other. Where heritage meets modern luxury, and every day feels a world away. Pass through the secure gates of St George's Hill and discover a serene, leafy oasis in the heart of Surrey. Nestled within 964 acres of rolling countryside, this exclusive gated estate offers unrivalled privacy, beauty, and prestige, just moments from London.

Originally created in 1910 by master builder W.G. Tarrant, the estate remains a sanctuary for those seeking elegance, security, and space. Characterful Tarrant-built homes sit alongside striking new mansions, many in Queen Anne or Georgian style, all set within generous, landscaped plots. St George's Hill is not just a place to live, it's a way of life. At its heart lies the renowned St George's Hill Golf Club, alongside the private Lawn Tennis Club with immaculate grass courts, swimming pool, spa, and clubhouse dining.

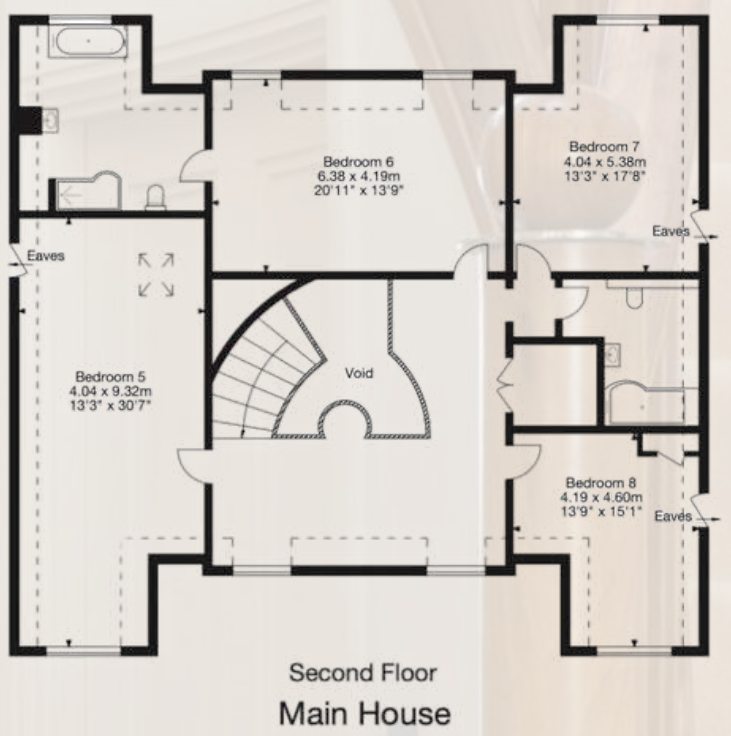
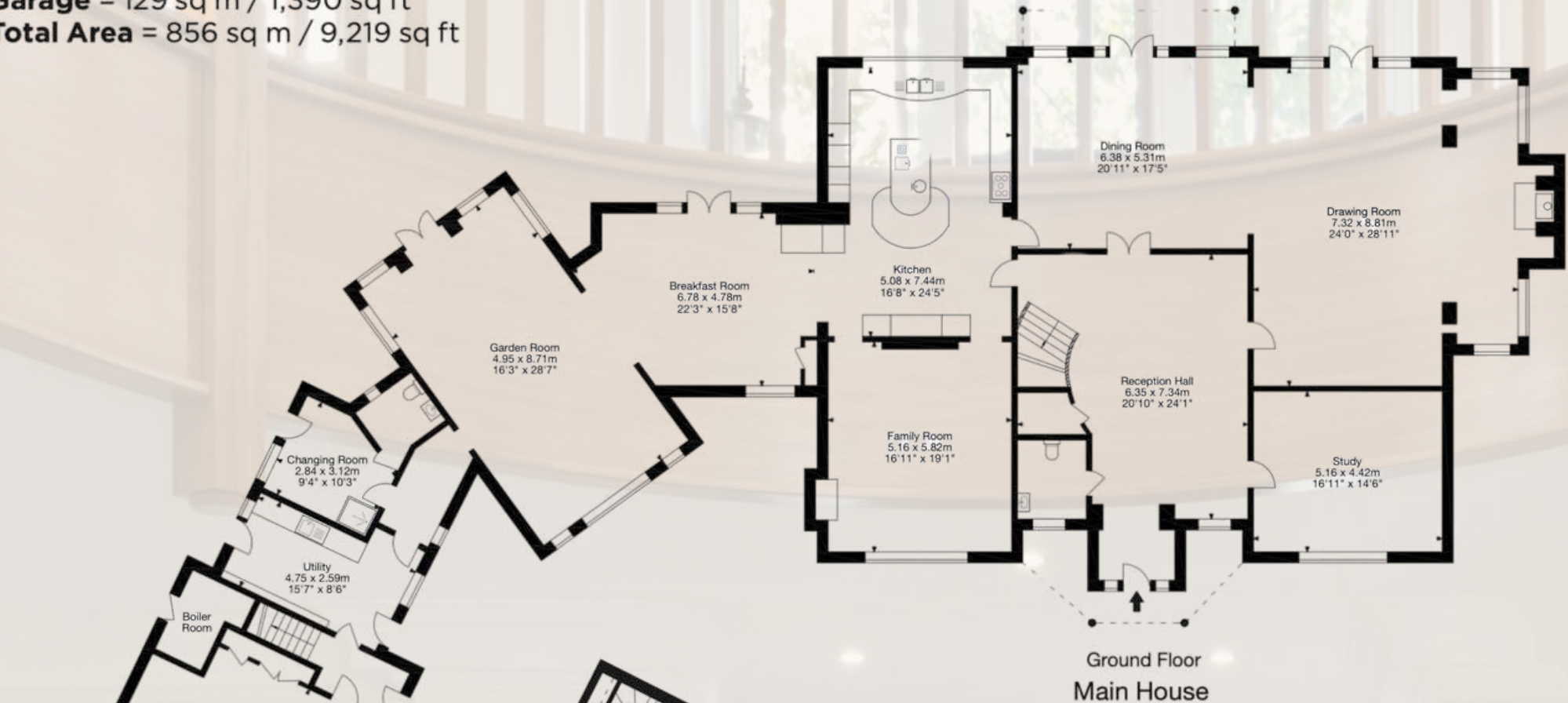
With 24/7 manned gates, CCTV, vehicle recognition, and secure resident access, the estate offers unparalleled peace of mind. St George's Hill is home to families who value safety, space, and a sense of community.



SOUTH ROAD, ST. GEORGES HILL



**Sundials, South Road, Weybridge**  
**Gross Internal Area (Approx.)**  
**Main House = 727 sq m / 7,829 sq ft**  
**Garage = 129 sq m / 1,390 sq ft**  
**Total Area = 856 sq m / 9,219 sq ft**







THE PRIVATE OFFICE : REAL ESTATE

# THE PRIVATE OFFICE REAL ESTATE

TK@THEPRIVATEOFFICERE.COM  
WWW.THEPRIVATEOFFICERE.COM

To arrange a viewing or for more  
information please contact Trevor at  
The Private Office : Real Estate

THE BOATHOUSE  
MILLBROOK  
GUILDFORD  
GU1 3XJ

TREVOR KEARNEY