

THE PRIVATE OFFICE  
REAL ESTATE

# The Meadow

CHELTENHAM

The Meadow presents an  
incredible opportunity to create a  
unique, contemporary home in 20  
acres of spectacular Cotswolds  
countryside.

  
FOUNDER AND CEO

---







In an Area of Outstanding Natural Beauty, planning permission has been granted for The Meadow given the exceptional architectural design created by award winning firm Hawkes Architecture.

Plans have been approved for a modern, 9473 sqft, 5 bedroom family home surrounded by 20 acres of natural meadow and woodland.







Thanks to the expertise of Richard Hawkes of Hawkes Architecture, planning permission was granted.

Without his forensic knowledge and incredible skillset, this would not have been achieved and no build would be permissible.

“The location we chose for the house, nestled within a natural hollow, embraces and enhances a strong sense of tranquility and connection to the Lilley Brook that flows through the site.”  
- Richard Hawkes





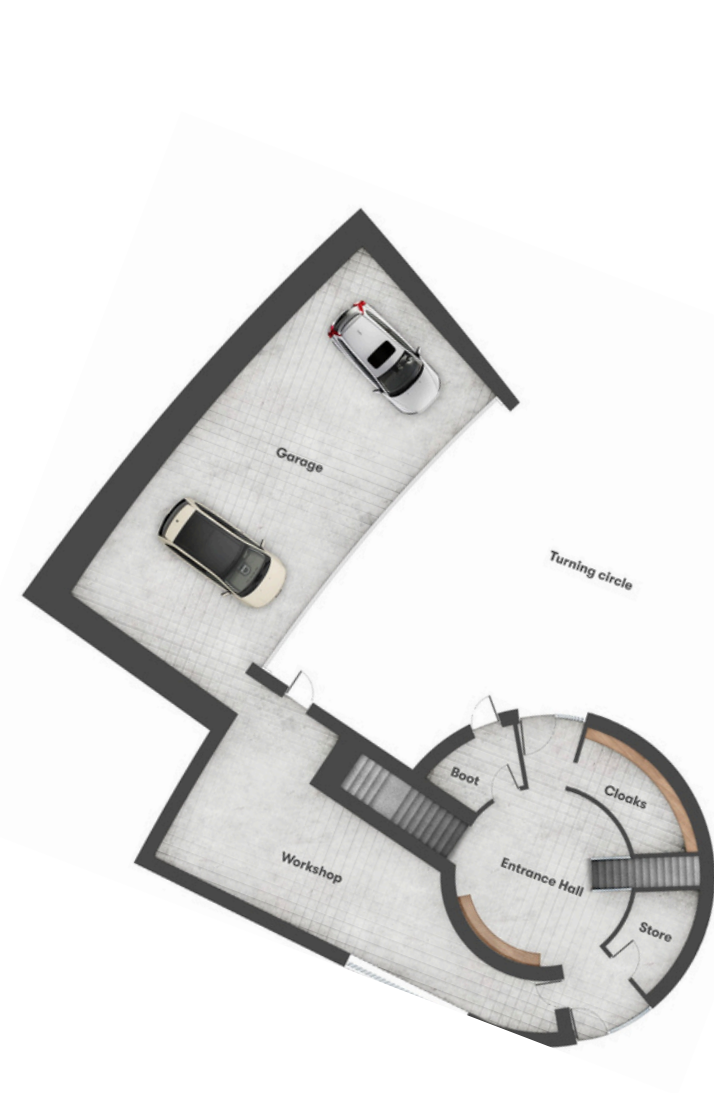
The Meadow includes a large, open plan layout that cleverly interacts with a circular terrace and further outdoor lounge which offers spectacular countryside views of the characterful landscape as well as a seamless extension to the living spaces. With remarkable living space, including a principal suite, four further bedroom suites, gym, cinema room, indoor garaging and a separate home office, The Meadow offers all encompassing family living.







# THE PRIVATE OFFICE REAL ESTATE



GARAGE



LOWER FLOOR



UPPER FLOOR





The location for The Meadow has been carefully chosen to facilitate a truly spectacular home, providing a perfect combination of both vibrant town life and a perfect countryside escape.

The Meadow is situated less than 2.5 miles away from the beautiful town of Cheltenham, offering an abundance of local amenities. Tranquility, glorious views and a secluded rural feel are complemented by The Meadow's convenient proximity to lively town life.





Nearby Cheltenham is a vibrant Regency town known for its excellent schools, including the renowned Cheltenham Ladies College and Dean Close, all consistently ranking among the best in the country.

The town hosts world-class events such as the Cheltenham Festival, a highlight of the horse racing calendar, and the Cheltenham Literature Festival, attracting top authors and speakers. Cheltenham provides beautiful Cotswold countryside, a thriving cultural scene and excellent transport links.

Its charming architecture, green spaces, and strong sense of community make Cheltenham a highly desirable place to call home.



The Meadow, Cheltenham GL53 9NE

Planning Permission Approved

9,473 sqft | 20 Acres





THE PRIVATE OFFICE  
REAL ESTATE

---



**Trevor Kearney**  
**Founder and CEO**

tk@theprivateofficere.com  
+44 (0)7301 289 026  
+44 (0) 203 916 6800  
@superprimesurrey



**Finn Nicholson**  
**Associate**

fn@theprivateofficere.com  
+44 (0) 7979 575112  
+44 (0) 203 916 6800  
@fjnproperty



# THE PRIVATE OFFICE REAL ESTATE



**TENURE** Freehold

**VIEWINGS** Strictly by appointment with the sole marketing agents The Private Office: Real Estate

**IMPORTANT NOTICE** The Private Office: Real Estate, their clients and any joint agents give notice that:

1. They are not authorised to make or give any representations or warranties in relation to the property either here or elsewhere, either on their own behalf or on behalf of their client or otherwise. They assume no responsibility for any statement that may be made in these particulars. These particulars do not form part of any offer or contract and must not be relied upon as statements or representations of fact.
2. Any areas, measurements or distances are approximate. The text, photographs and plans are for guidance only and are not necessarily comprehensive. It should not be assumed that the property has all necessary planning, building regulation or other consents and The Private Office: Real Estate have not tested any services, equipment or facilities. Purchasers must satisfy themselves by inspection or otherwise.

Details prepared: February 2025 Photography : CGI Throughout

**OFFICE ADDRESS**

The Boathouse, Millbrook  
Guildford, GU1 3XJ

**THE PRIVATE OFFICE : REAL ESTATE LIMITED**

Registered in England & Wales No. 14988093

[hello@thepivateofficere.com](mailto:hello@thepivateofficere.com)  
[thepivateofficere.com](http://thepivateofficere.com)

**REGISTERED ADDRESS**

1 Park Road  
Hampton Wick, KT1 4AS