

Plot 89, Elder Brook Park, Neasham Road, Darlington, DL2 1DL.
£184,995



Plot 89, Elder Brook Park, Neasham Road, Darlington, DL2 1DL.

£184,995

Council Tax Band:

FIRST TIME BUYER DEAL: £5,000 towards deposit, Carpets and flooring, £1,000 towards legal fees.
Integrated kitchen appliances: Oven, Hob, Hood, Dishwasher, Fridge/Freezer and washing machine.

The Ripon is a beautiful semi-detached home that's perfect for first-time buyers and families. This Three bedroom property comes with Two parking spaces. Downstairs, there is a front aspect kitchen/dining area to enjoy, as well as a spacious lounge with French doors leading to the rear garden. There is also a downstairs cloakroom and storage.

On the first floor, you can enjoy a generous principal bedroom with fitted wardrobes and an en-suite. There are also two further bedrooms and a family bathroom.

There is an estate management charge of approx.
£110+VAT pa (23/24)

Rear garden

Principal elevation

Entrance Hallway

Kitchen/dining area

12'1" x 8'2" (3.70 x 2.50)

Ground floor WC

Lounge

15'7" x 11'4" (4.75 x 3.46)

First floor landing

Principal bedroom

9'10" x 8'10" (3.01 x 2.71)

En-suite

7'0" x 5'4" (2.14 x 1.65)

Second bedroom

9'3" x 8'2" (2.83 x 2.49)

Third bedroom

7'10" x 6'0" (2.39 x 1.83)

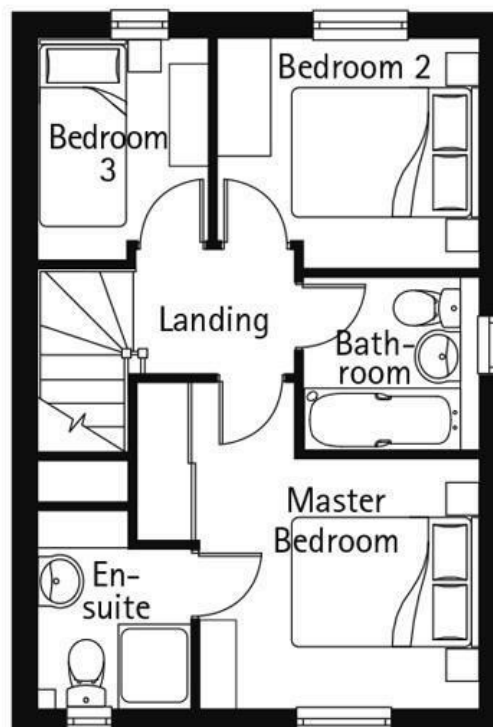
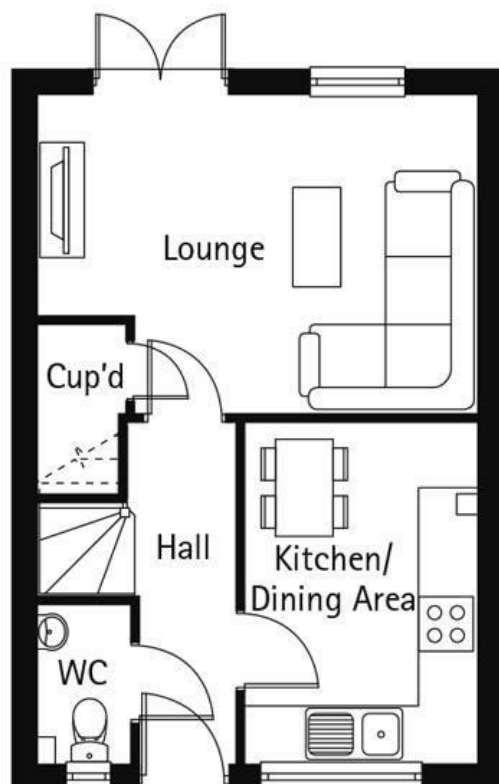
Bathroom

6'2" x 6'1" (1.89 x 1.87)





65 Duke Street
 Darlington
 County Durham
 DL3 7SD
 01325 804850
sales@vurvstates.co.uk
<https://www.vurv.online/>



Energy Efficiency Rating		
	Current	Potential
Very energy efficient - lower running costs		
(92 plus) A		
(81-91) B		
(69-80) C		
(55-68) D		
(39-54) E		
(21-38) F		
(1-20) G		
Not energy efficient - higher running costs		
England & Wales		EU Directive 2002/91/EC