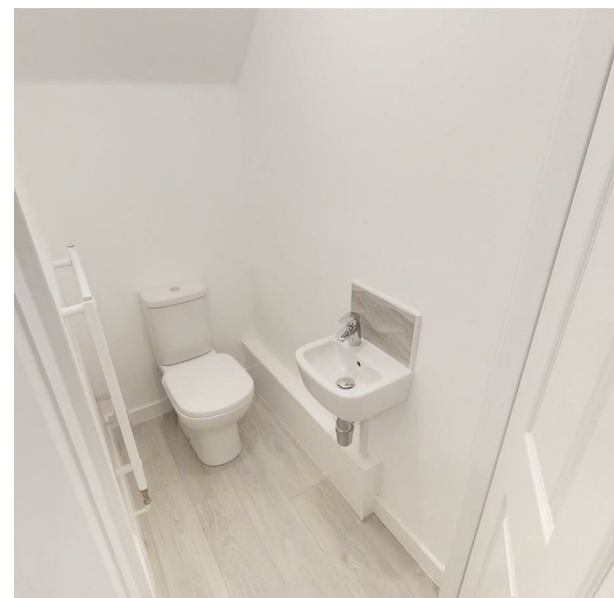


Plot 222, West Park Garden Village, Edward Pease Way, Darlington,
DL2 2TS
£209,995

estates⁴
'The Art of Property'



Plot 222, West Park Garden Village, Edward Pease Way, Darlington, DL2 2TS

£209,995

Council Tax Band:

* First time buyer deals available £5,000 towards deposit and flooring *

The Norwich is a unique and welcoming three bedroom home, designed to be both practical and stylish. It is fitted with fixtures from Beko, Hansgrohe, HIVE and Porcelanosa among others.

From the entrance hall, the property offers a generously-sized dual aspect lounge with attractive French doors to the rear garden. Also downstairs, the Larch features a spacious open-plan kitchen/dining area, as well as a cloakroom and a hand storage cupboard.

Upstairs, there is a beautiful principal suite which includes an en-suite and a fitted wardrobe. There are also two further bedrooms, a family bathroom and additional cupboard space.

EPC RATING: B

These houses are sold on a FREEHOLD basis.

There is an estate management charge of approx.

£110+VAT pa (23/24)

Bathroom/w.c

7'8" x 6'5" (2.36 x 1.96)

Rear garden

Principal elevation

Hallway

Lounge

18'0" x 9'6" (5.49 x 2.92)

Kitchen/dining area

18'0" x 7'3" (5.49 x 2.21)

Ground floor w/c

First floor landing

Principal bedroom

11'1" x 8'7" (3.40 x 2.64)

En-suite

10'4" x 5'2" (3.15 x 1.60)

Second bedroom

9'7" x 8'5" (2.94 x 2.59)

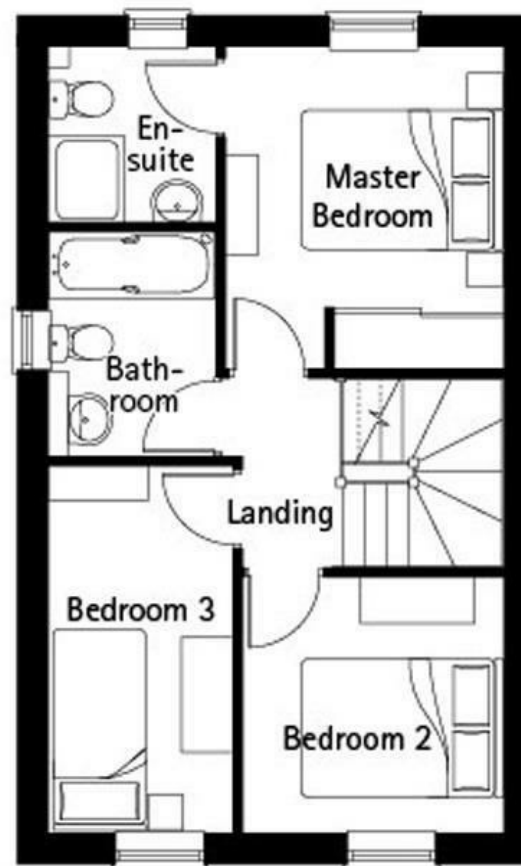
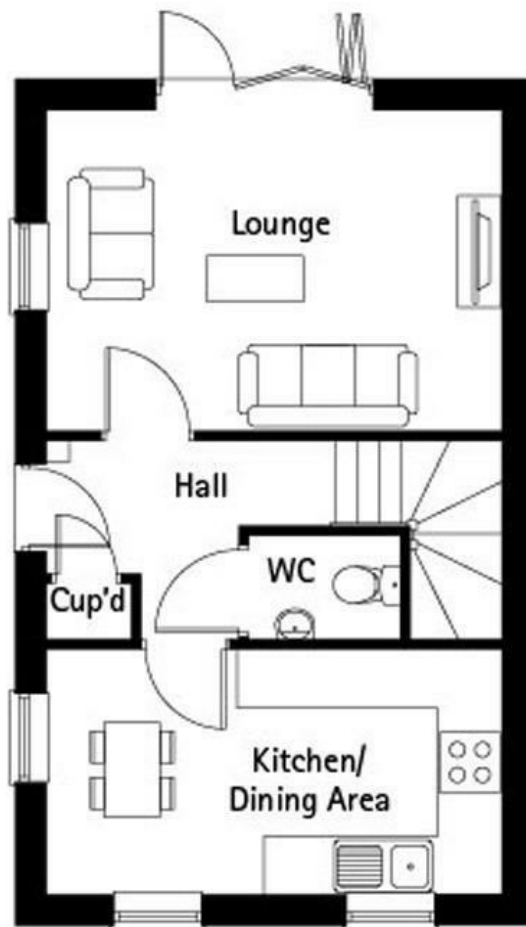
Third bedroom

9'1" x 6'3" (2.77 x 1.93)





65 Duke Street
Darlington
County Durham
DL3 7SD
01325 804850
sales@vurvestates.co.uk
<https://www.vurv.online/>



Energy Efficiency Rating		
	Current	Potential
Very energy efficient - lower running costs		
(92 plus) A		
(81-91) B		
(69-80) C		
(55-68) D		
(39-54) E		
(21-38) F		
(1-20) G		
Not energy efficient - higher running costs		
England & Wales		EU Directive 2002/91/EC