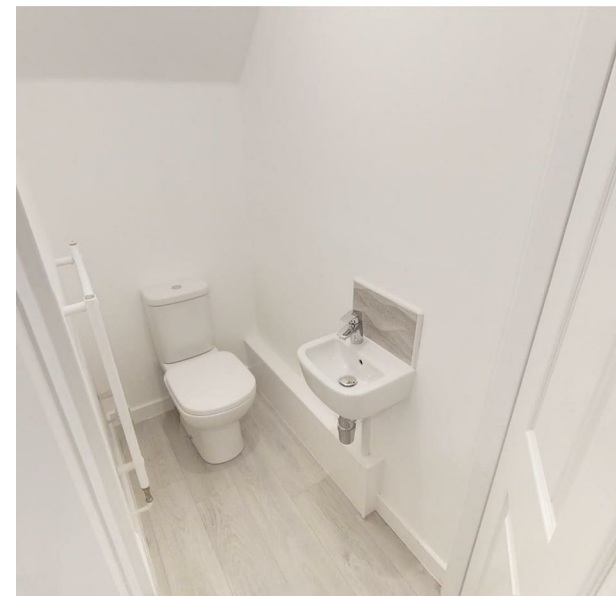


Plot 146, Elder Brook Park, Neasham Road, Darlington, DL2 1DL.
£214,995



Plot 146, Elder Brook Park, Neasham Road, Darlington, DL2 1DL.

£214,995

Council Tax Band:

The Norwich is a unique and welcoming Three bedroom home, designed to be both practical and stylish. It is fitted with fixtures from Beko, Hansgrohe, HIVE and Porcelanosa among others.

From the entrance hall, the property offers a generously-sized dual aspect lounge with attractive French doors to the rear garden. Also downstairs, the Larch features a spacious open-plan kitchen/dining area, as well as a cloakroom and a hand storage cupboard.

Upstairs, there is a beautiful principal suite which includes an en-suite and a fitted wardrobe. There are also two further bedrooms, a family bathroom and additional cupboard space.

EPC RATING: B

These houses are sold on a FREEHOLD basis.

There is an estate management charge of approx.

£110+VAT pa (23/24)

Family bathroom

7'8" x 6'5" (2.36 x 1.96)

Rear garden

Principal elevation

Entrance hallway

Lounge

18'0" x 9'6" (5.49 x 2.92)

Kitchen/dining area

18'0" x 7'3" (5.49 x 2.21)

Ground floor w/c

First floor landing

Principal bedroom

11'1" x 8'7" (3.40 x 2.64)

En-suite

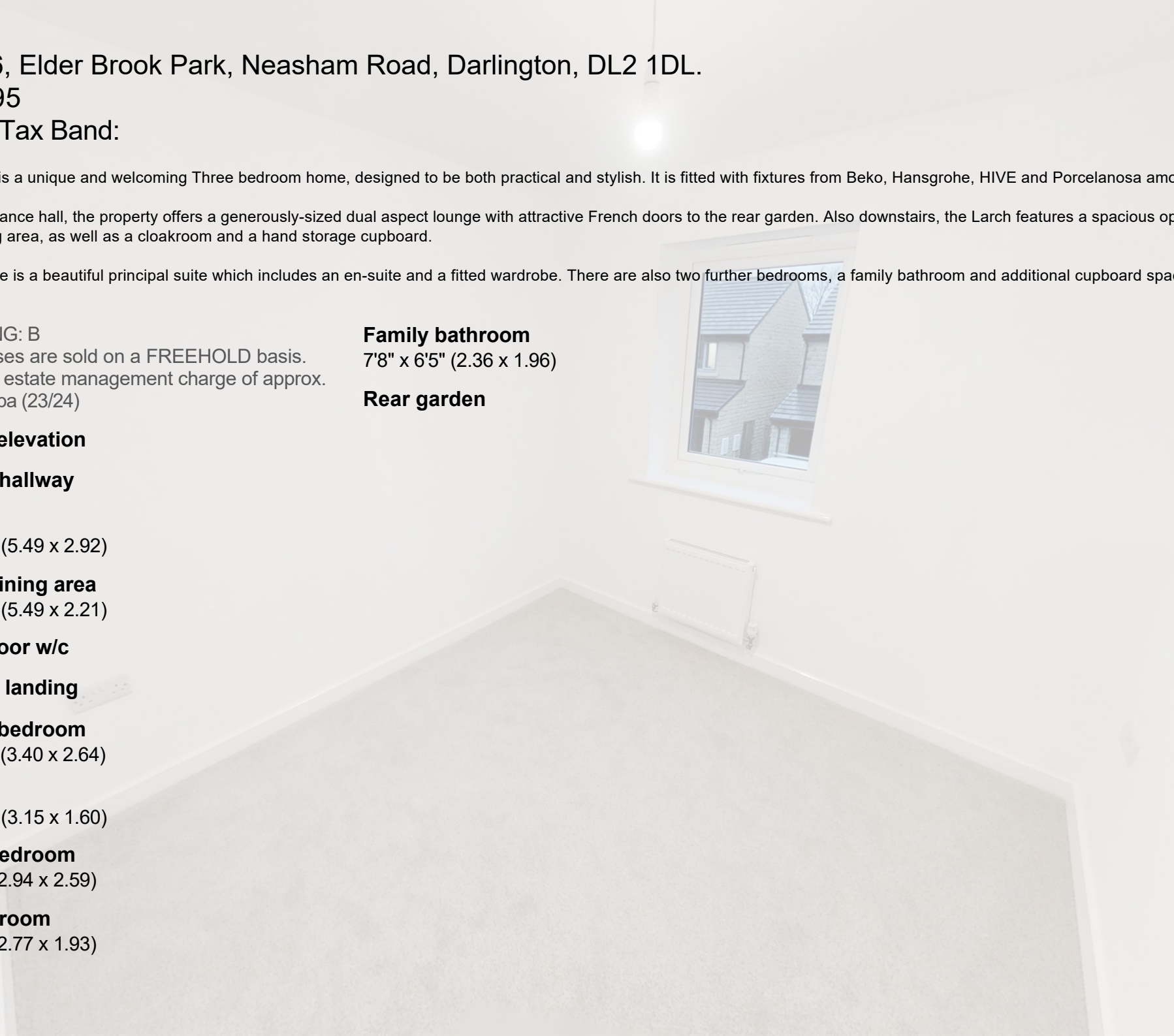
10'4" x 5'2" (3.15 x 1.60)

Second bedroom

9'7" x 8'5" (2.94 x 2.59)

Third bedroom

9'1" x 6'3" (2.77 x 1.93)

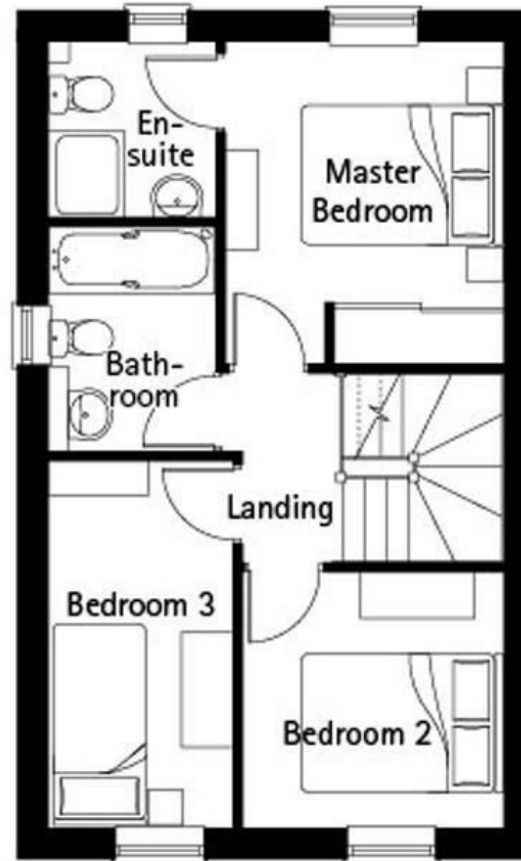
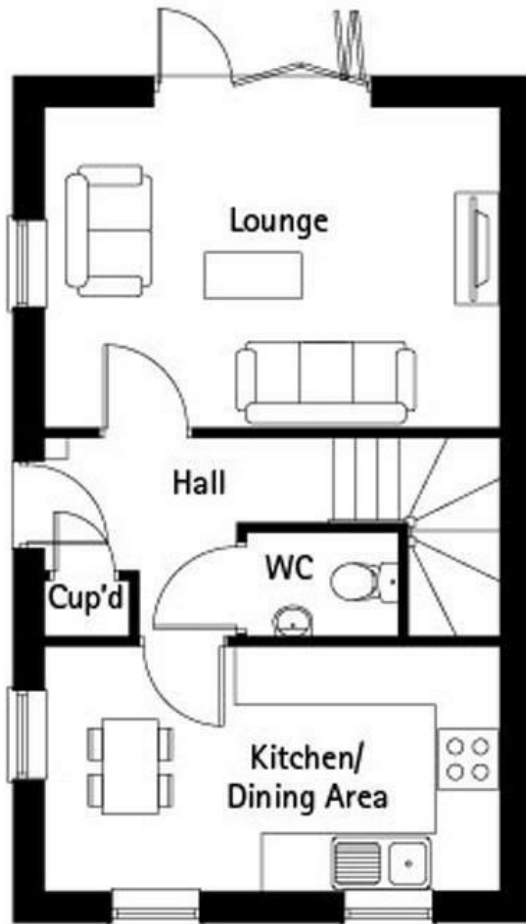






65 Duke Street
 Darlington
 County Durham
 DL3 7SD
 01325 804850

sales@vurvstates.co.uk
<https://www.vurv.online/>



Energy Efficiency Rating		Current	Potential
<i>Very energy efficient - lower running costs</i>			
(92 plus) A			
(81-91) B			
(69-80) C			
(55-68) D			
(39-54) E			
(21-38) F			
(1-20) G			
<i>Not energy efficient - higher running costs</i>			
England & Wales			EU Directive 2002/91/EC