

Plot 101, Hurworth Meadows, Neasham Road, Darlington, DL2 1DL.
£179,995



Plot 101, Hurworth Meadows, Neasham Road, Darlington, DL2 1DL.

£179,995

Council Tax Band:

** First time buyer deal: £5,000 towards deposit, flooring included, Integrated appliances including: Oven, Hob, Hood, Fridge Freezer and Dishwasher **

The Jasmine is a beautiful Three bedroom home that's perfect for first time buyers and small families. It comes complete with parking. Downstairs, there is a front aspect kitchen–dining area to enjoy, as well as a spacious lounge with French doors leading to the rear garden. There is also a downstairs cloakroom.

On the first floor, you can enjoy a generous principal bedroom with en-suite facilities. There are two good sized bedrooms and a family bathroom.

Like all properties at Hurworth Meadows, the Jasmine comes complete with premium insulation, solar panels, and an electric vehicle charging port.

EPC Band B

These houses are sold on a FREEHOLD basis.
There is an estate management charge of approx.
£110+VAT pa (23/24)

Bathroom

6'2" x 6'1" (1.89 x 1.87)

Rear garden

Principal elevation

Entrance hallway

Kitchen/dining area

12'1" x 8'2" (3.70 x 2.50)

Lounge

15'7" x 11'4" (4.75 x 3.46)

Ground floor w/c

First floor landing

Principal bedoom

9'10" x 8'10" (3.01 x 2.71)

En-suite

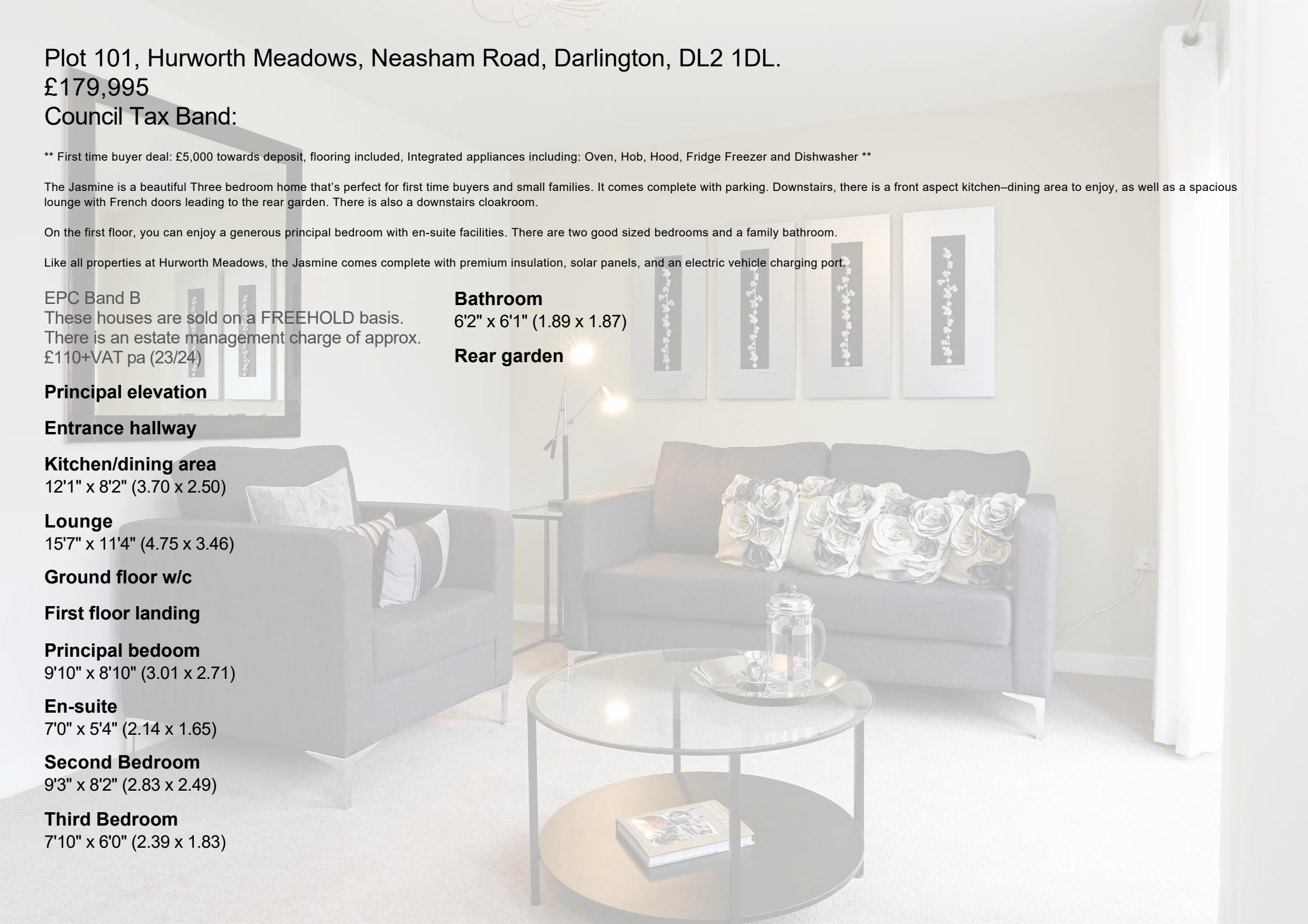
7'0" x 5'4" (2.14 x 1.65)

Second Bedroom

9'3" x 8'2" (2.83 x 2.49)

Third Bedroom

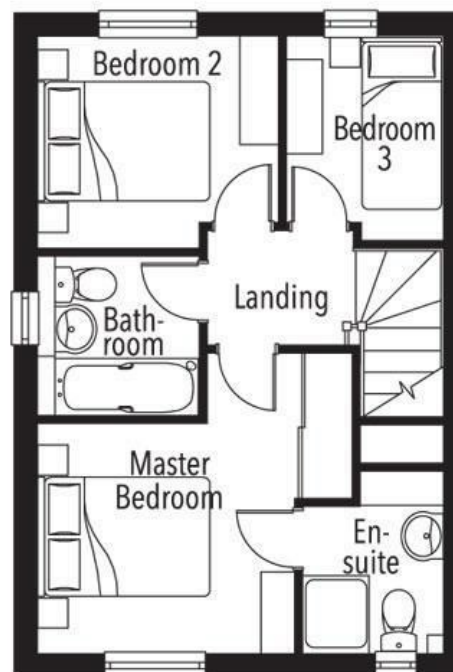
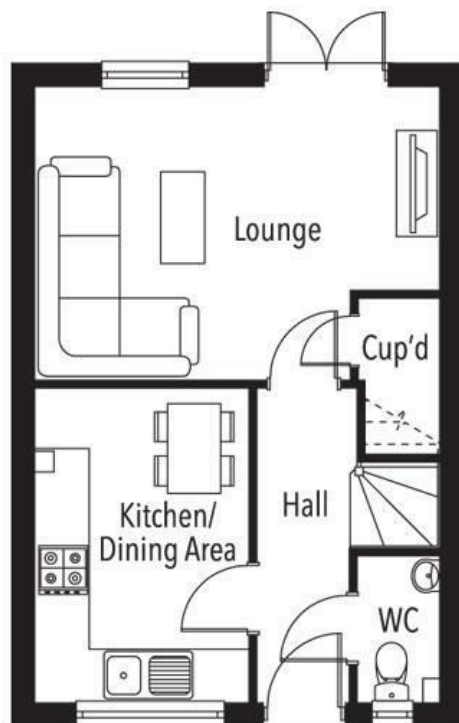
7'10" x 6'0" (2.39 x 1.83)







65 Duke Street
 Darlington
 County Durham
 DL3 7SD
 01325 804850
 sales@vurvstates.co.uk
<https://www.vurv.online/>



Energy Efficiency Rating		
	Current	Potential
Very energy efficient - lower running costs		
(92 plus) A		
(81-91) B		
(69-80) C		
(55-68) D		
(39-54) E		
(21-38) F		
(1-20) G		
Not energy efficient - higher running costs		
England & Wales		EU Directive 2002/91/EC