

Hurworth Meadows, Neasham Road, Darlington, DL2 1DL.  
£234,995





Hurworth Meadows, Neasham Road, Darlington, DL2 1DL.

£234,995

Council Tax Band:

\*\* Part exchange available \*\*

The Heather is a wonderful 3-bedroom detached home with a built-in garage. The front lounge is a light and airy space. Elsewhere on the ground floor, the Heather offers a stunning open-plan kitchen/ dining area with French doors leading to the rear garden. There is also a downstairs WC, a utility room, and storage.

Upstairs, the generous principal bedroom comes complete with a fitted wardrobe and a luxurious en-suite, complemented by two more spacious bedrooms and a family bathroom.

Like all properties at Hurworth Meadows, the Heather comes complete with premium insulation, solar panels, and an electric vehicle charging port.

EPC Band B

These houses are sold on a FREEHOLD basis.  
There is an estate management charge of approx.  
£110+VAT pa (23/24)

**Principal elevation**

**Entrance Hallway**

**Lounge**

12'5" x 9'10" (3.80 x 3.00)

**Kitchen/dining area**

16'2" x 9'0" (4.95 x 2.75)

**Utility room**

5'6" x 5'5" (1.70 x 1.66)

**Ground floor w/c**

**First floor landing**

**Principal bedroom**

13'3" x 10'0" (4.05 x 3.06)

**En-suite**

8'4" x 5'5" (2.56 x 1.66)

**Bedroom two**

12'5" x 8'4" (3.81 x 2.55)

**Bedroom three**

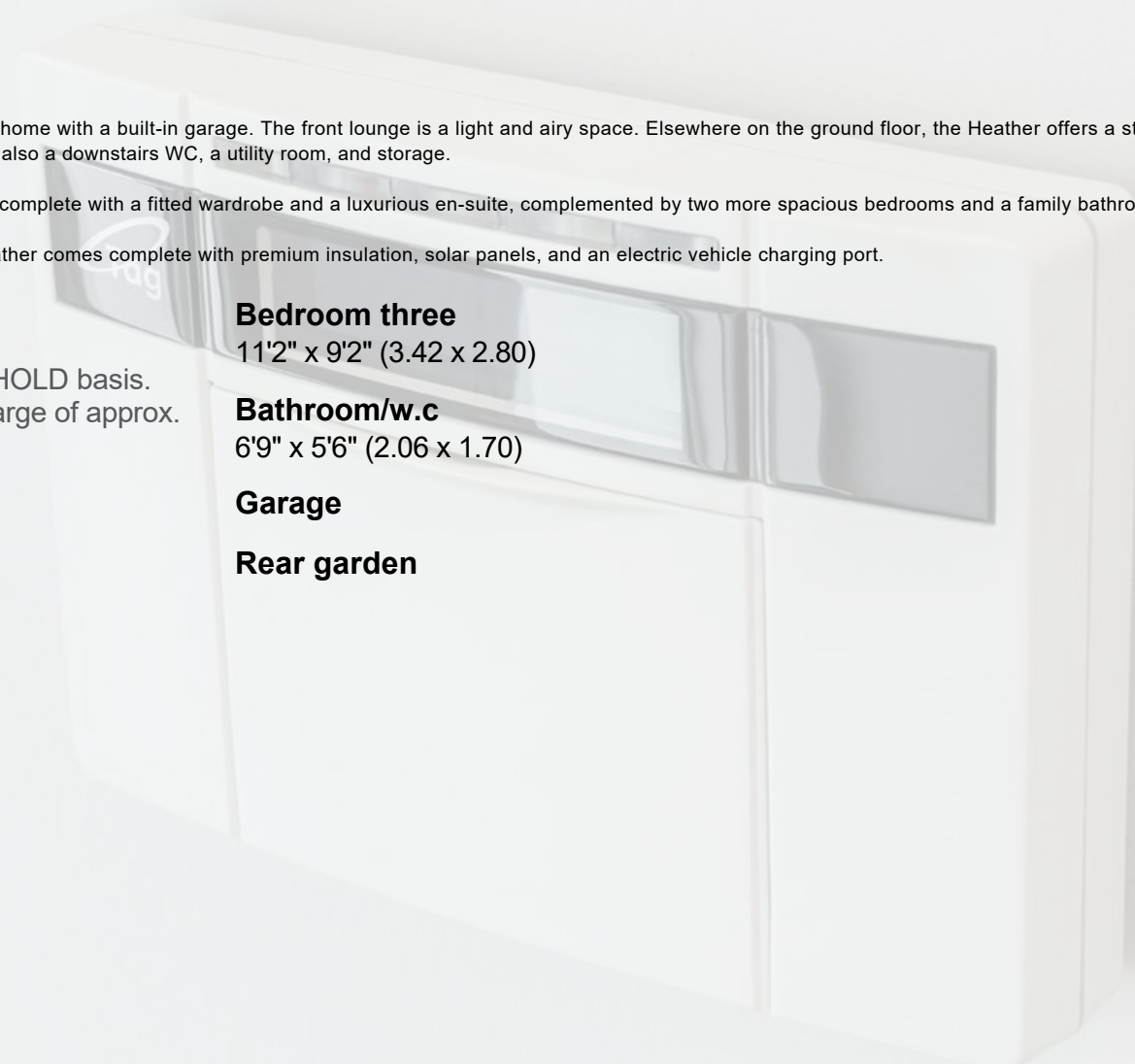
11'2" x 9'2" (3.42 x 2.80)

**Bathroom/w.c**

6'9" x 5'6" (2.06 x 1.70)

**Garage**

**Rear garden**

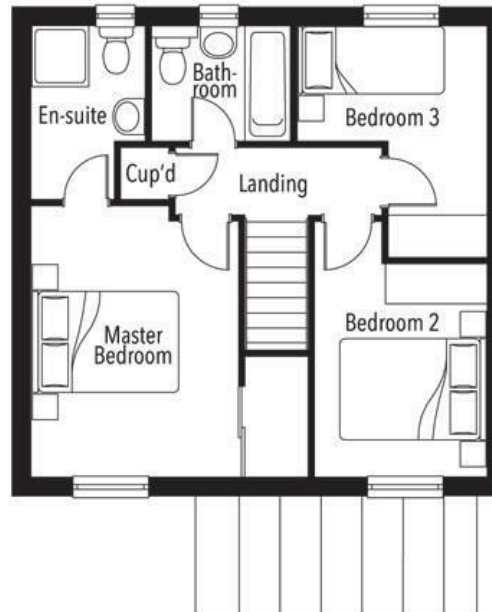
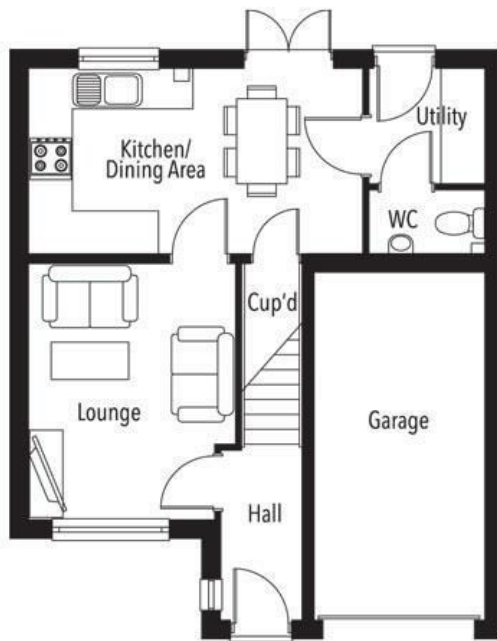






65 Duke Street  
 Darlington  
 County Durham  
 DL3 7SD  
 01325 804850

sales@vurvstates.co.uk  
<https://www.vurv.online/>



Energy Efficiency Rating		Current	Potential
<i>Very energy efficient - lower running costs</i>			
(92 plus) <b>A</b>			
(81-91) <b>B</b>			
(69-80) <b>C</b>			
(55-68) <b>D</b>			
(39-54) <b>E</b>			
(21-38) <b>F</b>			
(1-20) <b>G</b>			
<i>Not energy efficient - higher running costs</i>			
<b>England &amp; Wales</b>		EU Directive 2002/91/EC	