

Elder Brook Park, Neasham Road, Darlington, DL2 1DL.
£199,995



Elder Brook Park, Neasham Road, Darlington, DL2 1DL.

£199,995

Council Tax Band:

** Part exchange available **

** Mortgage subsidy scheme £250 a month for two years **

The Norwich is a unique and welcoming 3-bedroom home, designed to be both practical and stylish. It is fitted with fixtures from Beko, Hansgrohe, HIVE and Porcelanosa among others.

From the entrance hall, the property offers a generously-sized dual aspect lounge with attractive French doors to the rear garden. Also downstairs, the Larch features a spacious open-plan kitchen/dining area, as well as a cloakroom and a hand storage cupboard.

Upstairs, there is a beautiful principal suite which includes an en-suite and a fitted wardrobe. There are also two further bedrooms, a family bathroom and additional cupboard space.

EPC RATING: B

These houses are sold on a FREEHOLD basis. There is an estate management charge of approx. £110+VAT pa (23/24)

Principal elevation

Hallway

Lounge

18'0" x 9'6"

Kitchen/dining area

18'0" x 7'3"

Ground floor w/c

First floor landing

Principal bedroom

11'1" x 8'7"

En-suite

10'4" x 5'2"

Bedroom two

9'7" x 8'5"

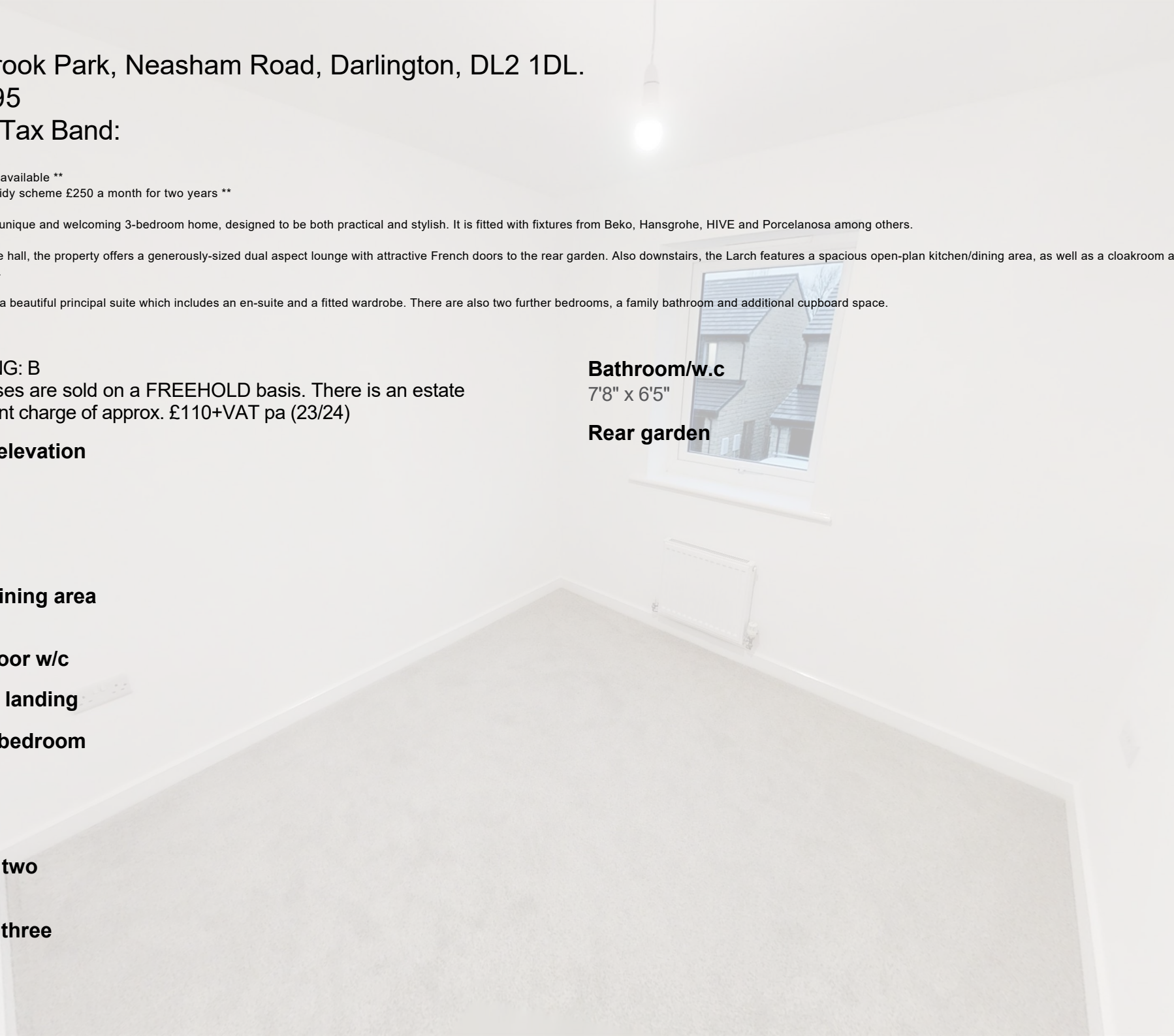
Bedroom three

9'1" x 6'3"

Bathroom/w.c

7'8" x 6'5"

Rear garden



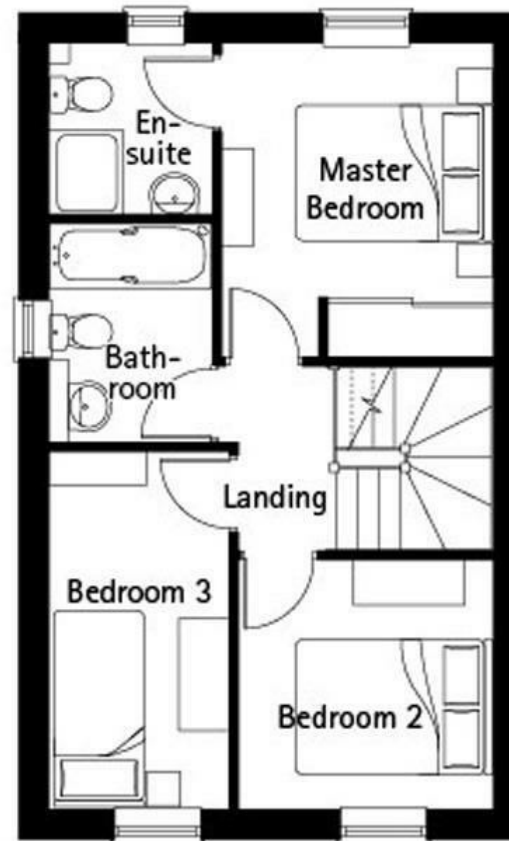
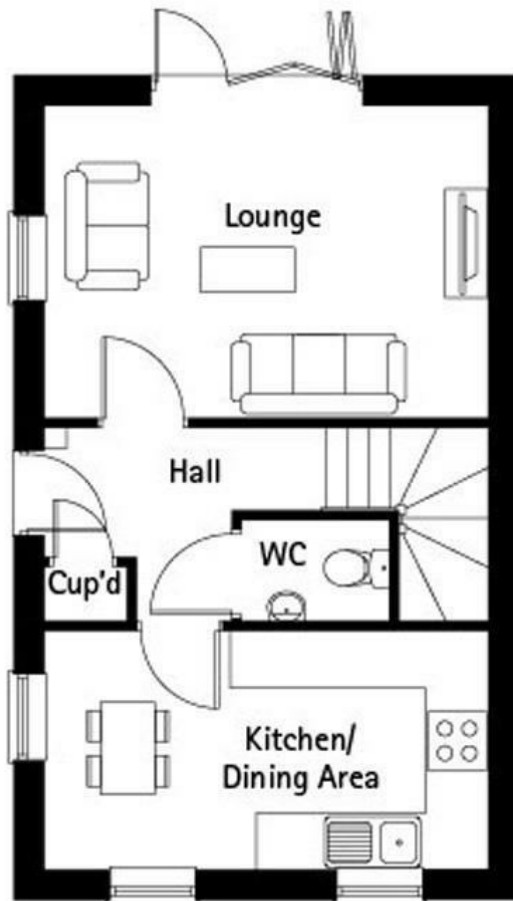








65 Duke Street
 Darlington
 County Durham
 DL3 7SD
 01325 804850
 sales@vurvstates.co.uk
<https://www.vurv.online/>



Energy Efficiency Rating		
	Current	Potential
Very energy efficient - lower running costs		
(92 plus) A		
(81-91) B		
(69-80) C		
(55-68) D		
(39-54) E		
(21-38) F		
(1-20) G		
Not energy efficient - higher running costs		
England & Wales	EU Directive 2002/91/EC 