

Plot 198, West Park Garden Village, Edward Pease Way, Darlington,
DL2 2TS.
£269,995



Plot 198, West Park Garden Village, Edward Pease Way, Darlington, DL2 2TS.

£269,995

Council Tax Band:

** Part exchange available **

** £250 a month towards mortgage payments for two years **

The Durham has been laid out with the modern family in mind. An open plan kitchen, dining and family area provides a generous space for relaxing and enjoying time together. This is a home that perfectly combines functionality and sophistication, with a master en-suite, study and freestanding garage and 2 parking spaces.

Stylish bi-fold doors open out onto a garden at the rear, perfect for the summer months when you want outdoor and indoor spaces to blend together seamlessly.

Throughout the ground floor and first floor, the careful design in this home is evident. Spaces flow freely, allowing each room to work in unison. Functionality is combined with sophistication to make this a home that is flexible enough to deal with a growing family with changing needs.

With a B energy rating this new home outperforms traditional homes built in the 19th and 20th centuries – resulting in a significant saving over the course of a year.

EPC BAND B

These houses are sold on a FREEHOLD basis. There is an estate management charge of approx. £130+VAT pa

Principal elevation

Entrance hallway

Lounge

13'5" x 10'7"

Study

6'11" x 6'1"

Kitchen/family/dining area

20'8" x 12'1"

Utility room

6'0" x 5'4"

Ground floor w.c

First floor landing

Principal bedroom

11'6" x 10'6"

En-suite

7'3" x 4'6"

Second bedroom

10'9" x 10'6"

Third bedroom

12'3" x 6'8"

Fourth bedroom

8'11" x 7'1"

Bathroom/w.c

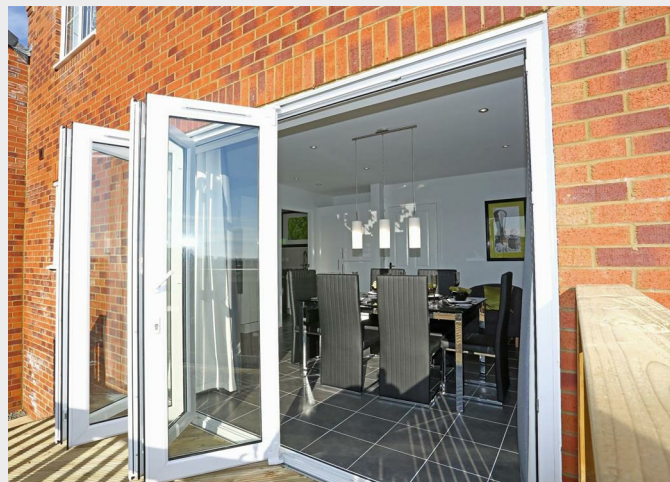
6'9" x 5'11"

Rear garden

Garage

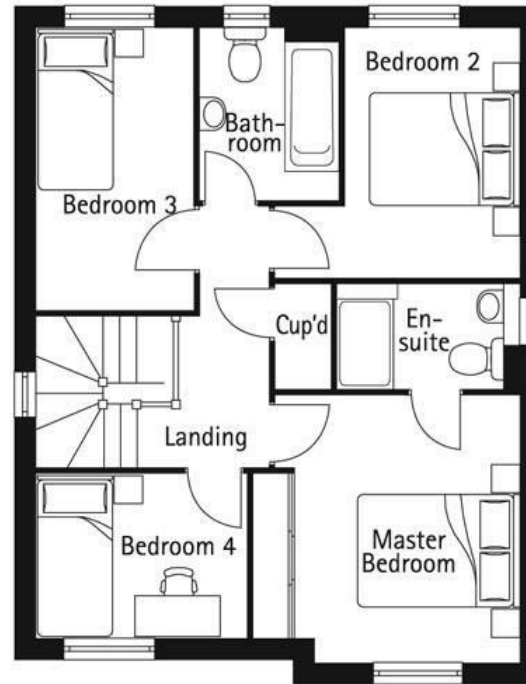
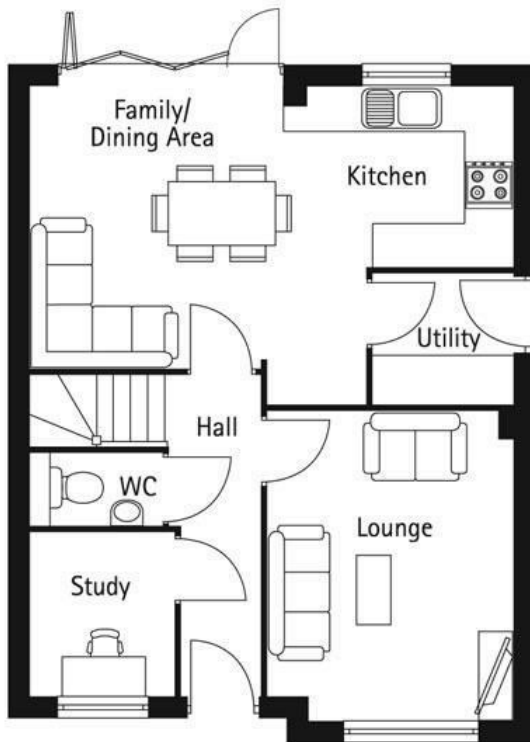








65 Duke Street
 Darlington
 County Durham
 DL3 7SD
 01325 804850
 sales@vurvstates.co.uk
<https://www.vurv.online/>



Energy Efficiency Rating		
	Current	Potential
Very energy efficient - lower running costs		
(92 plus) A		
(81-91) B		
(69-80) C		
(55-68) D		
(39-54) E		
(21-38) F		
(1-20) G		
Not energy efficient - higher running costs		
England & Wales	EU Directive 2002/91/EC 