

West Park Garden Village, Edward Pease Way, Darlington, DL2 2TS.
£259,995



West Park Garden Village, Edward Pease Way, Darlington, DL2 2TS.

£259,995

Council Tax Band:

** Part exchange available **

** Mortgage subsidy £250 a month for two years **

The Arundel is a four bedroom home perfect for any growing family or couple. The ground floor features a spacious lounge with an open plan kitchen/ family area and separate utility room. In the family area there are bi folding doors leading to the rear garden, perfect for entertaining friends and family.

Upstairs there is a generous master bedroom with fitted wardrobes and en-suite There is three further bedrooms and a family bathroom. Externally there is an integral garage accessible from the front of the property.

A high specification as standard is expected in all our homes, with brands such as Beko, Porcelanosa and HIVE included. We also include spotlights, appliances, and blocked paved drives in all our homes.

A high specification as standard is expected in all our homes, with brands such as Beko, Porcelanosa and HIVE included. We also include spotlights, appliances, and blocked paved drives in all our homes.

EPC BAND B

These houses are sold on a FREEHOLD basis. There is an estate management charge of approx. £130+VAT pa

Principal elevation

Entrance hallway

Lounge

13'7" x 10'6"

Kitchen/dining area

18'9" x 9'8"

Utility room

6'5" x 5'2"

First floor landing

Principal bedroom

13'11" x 9'11"

En-suite

6'8" x 5'10"

Bedroom two

12'1" x 10'1"

Bedroom three

10'2" x 7'10"

Bedroom four

11'4" x 7'10"

Bathroom/w.c

7'10" x 5'8"

Garage

Rear garden

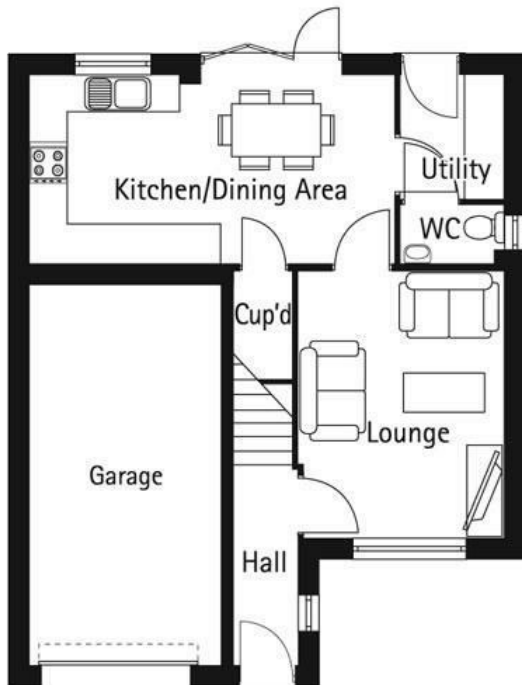








65 Duke Street
 Darlington
 County Durham
 DL3 7SD
 01325 804850
 sales@vurvstates.co.uk
<https://www.vurv.online/>



Energy Efficiency Rating		
	Current	Potential
Very energy efficient - lower running costs		
(92 plus) A		
(81-91) B		
(69-80) C		
(55-68) D		
(39-54) E		
(21-38) F		
(1-20) G		
Not energy efficient - higher running costs		
England & Wales	EU Directive 2002/91/EC	