





Riveria Court, Sandgate High Street, Sandgate  
Offers Over £250,000

2 1 1





Wake up to the soothing sound of the waves and enjoy uninterrupted panoramic sea views from this exceptional two-bedroom apartment in the heart of Sandgate. Perfectly positioned in the sought-after Riviera Court, this charming home offers a lifestyle of coastal tranquility while being moments from local amenities and excellent transport links.

Step inside to a bright and airy open-plan living and dining space, where a sliding patio door opens to your own private patio—the ideal spot for morning coffee while watching the sunrise over the Channel.

The well-proportioned kitchen, complete with a window framing breathtaking sea views, makes cooking a delight.

Both double bedrooms offer comfortable living, while the sleek, modern shower room adds a touch of luxury. The property also benefits from residents' off-road parking, ensuring convenience.

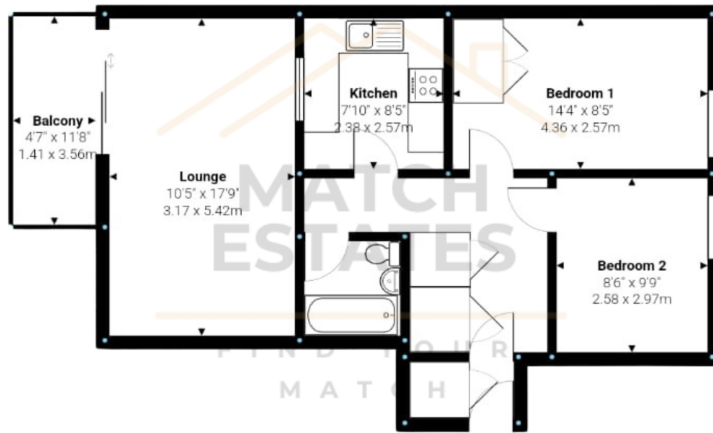
Located on Sandgate High Street, you'll have an array of charming cafés, independent shops, and seafront restaurants at your doorstep. Whether you fancy a scenic stroll along the promenade, a dip in the sea, or an evening drink at a beachfront bar, this home offers the ultimate coastal lifestyle.

With a long 900+ year lease and chain-free status, this is a rare opportunity to secure a stunning seaside retreat. Excellent transport connections include nearby Folkestone West Train Station and direct bus routes, making it ideal for commuters or those seeking a relaxing escape by the sea.

Don't miss out—book a viewing today and start living your dream coastal life!







Measurements are approximate and for display purposes only

- Direct Seaviews
- Private Patio
- Two Double Bedrooms
- Open Plan Living/Dining Area
- Fantastic Location
- Residents Off Street Parking
- Modern Shower Room
- Chain Free



01303 475085

Match Estates LTD, trading as Match Estates, is a private limited company: 15509408  
 Registered Address: B3 Bouverie House, Folkestone, Kent, CT20 1AE  
 VAT Registration Number: 464 1921 89

[www.match-estates.co.uk](http://www.match-estates.co.uk)

