



**MATCH
ESTATES**

FIND YOUR
MATCH

Albion Villas, Folkestone, Kent

Fixed Price £265,000

1 1 1



Nestled in the picturesque Albion Villas, this delightful one-bedroom apartment offers a unique blend of character and history, having once been the home of the illustrious Charles Dickens during the writing of *Little Dorrit*. This property is not just a home; it's an invitation to experience a lifestyle steeped in culture and coastal beauty.

As you enter through a private entrance, you're greeted by a modern kitchen that can easily be reconfigured to suit your storage needs, perfect for culinary enthusiasts or those who enjoy entertaining. The living room, accessed from the hallway, boasts a stunning bay window that floods the space with natural light, creating a warm and inviting atmosphere. Here, you can unwind while enjoying breathtaking views of the English Channel and, on clear days, the distant French coastline.

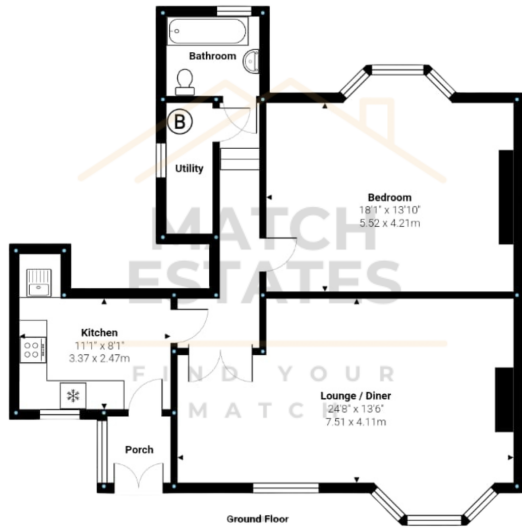
Retreat to the expansive bedroom at the rear of the property, featuring tall ceilings, elegant period coving, and a lovely light rose that enhances the sense of space and tranquillity. The bathroom is conveniently situated nearby, along with a storage cupboard that houses the boiler, ensuring functionality alongside charm.

Living in Albion Villas means embracing a vibrant coastal lifestyle. Just a short stroll away, you'll find Folkestone's bustling town centre, brimming with a variety of shops, cafes, and restaurants that cater to every taste. From artisanal bakeries to contemporary dining spots, the culinary scene here is both diverse and exciting.

For those who love the outdoors, the stunning seafront promenade is right on your doorstep. Enjoy leisurely walks along the beach, invigorating jogs by the shore, or simply bask in the sun while soaking up the scenic views. The nearby Creative Quarter is a cultural hub, showcasing local artists, galleries, and independent boutiques, making it a perfect spot for leisurely afternoons.

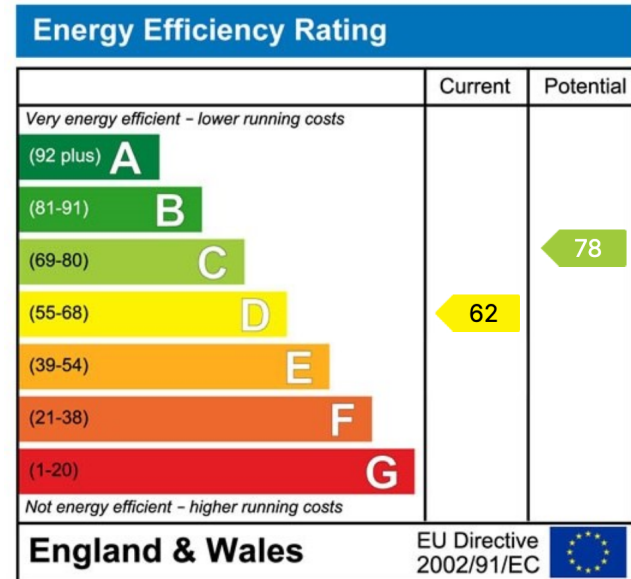
Transport links are excellent, with Folkestone Central train station providing easy access to London and other major cities, ideal for commuters or day-trippers. Additionally, the Eurotunnel is just a short drive away, making it easy to explore the Continent.





Measurements are approximate and for display purposes only

- Stunning Seaviews
- Chain Free
- Period Features
- High Ceilings
- Former Home Of Charles Dickens
- Bay Windows
- Modern Kitchen
- Private Entrance



01303 475085

Match Estates LTD, trading as Match Estates, is a private limited company: 15509408
 Registered Address: B3 Bouverie House, Folkestone, Kent, CT20 1AE
 VAT Registration Number: 464 1921 89

www.match-estates.co.uk

