



Stanley Road, Folkestone, CT19 4LQ

Guide Price £85,000

1 1 1



GUIDE PRICE £85,000-£95,000

****Property Description: One-Bedroom Fully Accessible Ground-Floor Flat in Kipps Lodge, Cheriton****

Welcome to Kipps Lodge, a beautifully presented one-bedroom, ground-floor flat situated in the heart of Cheriton. This well-maintained property offers the perfect blend of modern living and accessibility, making it an ideal choice for those looking to downsize or take their first step onto the property ladder.

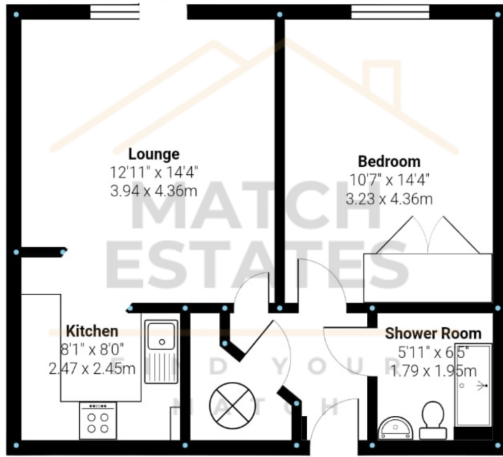
As you enter the flat, you are greeted by a spacious hallway that leads you through the property. The fully accessible bathroom features a standing bath, WC, and basin, all designed with ease of use in mind.

The generous double bedroom offers ample space and overlooks the tranquil communal garden at the rear, providing a peaceful retreat at the end of the day. The open-plan kitchen and living area is the heart of the home, with plenty of natural light pouring in through the patio doors, which lead directly to the communal garden—a perfect spot for enjoying your morning coffee or evening relaxation.

Residents of Kipps Lodge benefit from unallocated, off-road parking, ensuring convenience and ease of access. The property is available on a shared ownership basis, offering a 65% share with NO additional rent to pay, making it an attractive and affordable option in a sought-after location.

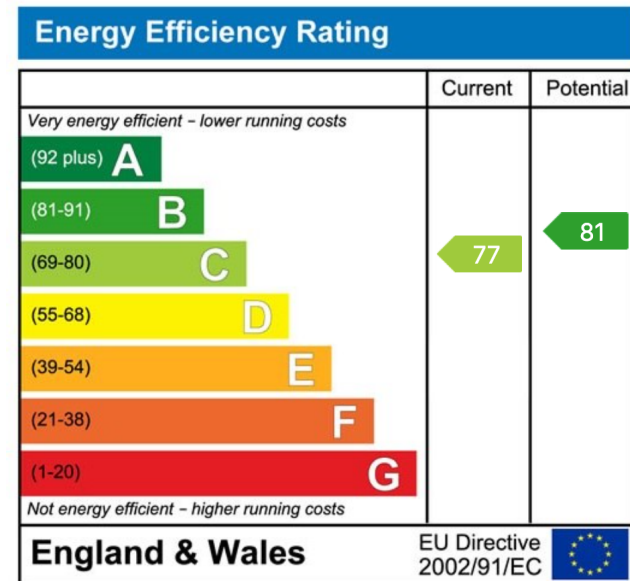
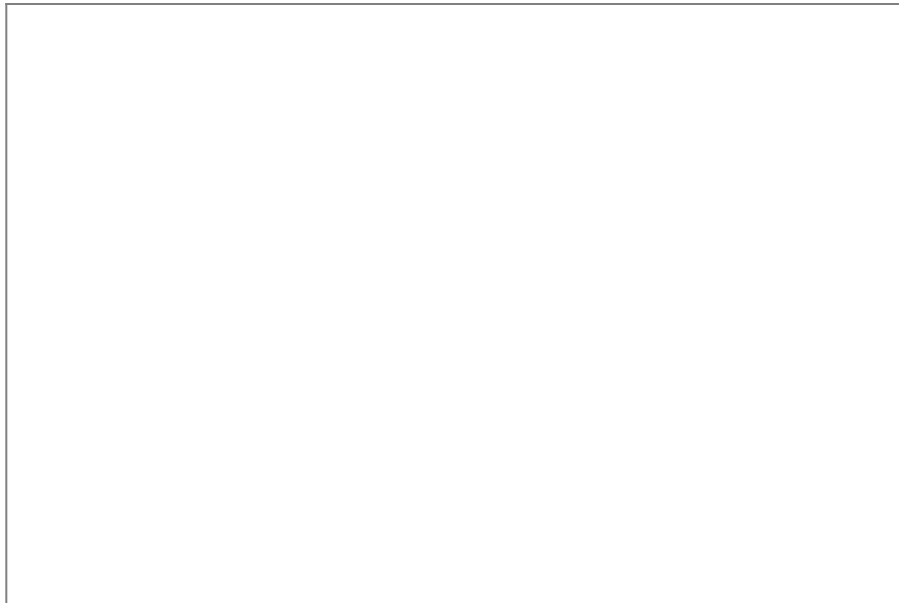
Don't miss this opportunity to secure a delightful and accessible home in a central Cheriton location. Contact us today to arrange a viewing.





Measurements are approximate and for display purposes only

- 65% Shared Ownership
- Ability To Staircase to 80%
- Ground Floor Apartment
- Wheelchair Accessible
- No Age Restriction
- Patio Door To Communal Garden
- Unallocated Off-Road Parking
- Large Double Bedroom



01303 475085

Match Estates LTD, trading as Match Estates, is a private limited company: 15509408
 Registered Address: B3 Bouverie House, Folkestone, Kent, CT20 1AE
 VAT Registration Number: 464 1921 89

www.match-estates.co.uk

