



**MATCH
ESTATES**

FIND YOUR
MATCH

Archers Court Road, Whitfield, Dover, Kent, CT16 3HU

Guide Price £375,000

3 2 1



Discover the charm of this delightful three-bedroom detached home nestled on the peaceful Archers Court Road in Whitfield. Combining modern comfort with classic appeal, this residence promises a wonderful living experience.

As you enter, the welcoming ground floor unfolds before you, featuring a spacious open-plan lounge and dining area ideal for both relaxation and entertaining. The room's centerpiece, a beautiful log burner, infuses the space with warmth and character. The adjoining kitchen is well-appointed with modern appliances and ample storage, making it a joy to prepare meals. A handy utility room adds to the home's functionality.

The property also boasts a generous office space, perfect for working from home or studying in peace. The master bedroom, complete with a sizable ensuite, offers a luxurious retreat for rest and relaxation. A family shower room on this level enhances convenience and practicality.

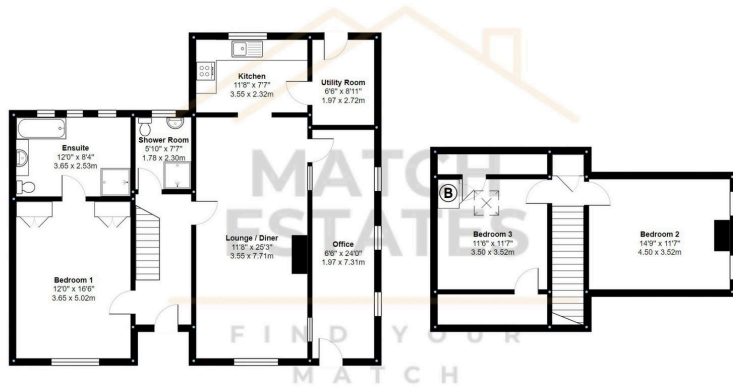
Upstairs, two well-proportioned double bedrooms provide comfortable and serene accommodations.

Outside, the expansive garden offers a picturesque setting for outdoor activities and al fresco dining.

Practicality is ensured with off-street parking for two cars, providing easy and hassle-free arrivals and departures.



- Fantastic Sized Plot
- Spacious Family Home
- Driveway for Two Cars
- Ensuite Bathroom
- Sought After Location
- Great Size Garden
- Handy Office/Kids Play Room • Ideal Family Home



Measurements are approximate and for display purposes only



Energy Efficiency Rating		
	Current	Potential
<i>Very energy efficient - lower running costs</i>		
(92 plus) A		
(81-91) B		
(69-80) C		77
(55-68) D	57	
(39-54) E		
(21-38) F		
(1-20) G		
<i>Not energy efficient - higher running costs</i>		
England & Wales	EU Directive 2002/91/EC	

01303 475085

Match Estates LTD, trading as Match Estates, is a private limited company: 15509408
 Registered Address: B3 Bouverie House, Folkestone, Kent, CT20 1AE
 VAT Registration Number: 464 1921 89

www.match-estates.co.uk

