



Available With
NO DEPOSIT!

Coombe Valley Road

£975PCM (Deposit: £1,125)

🛏️ 2 🚿 1 🛋️ 2



Tax Band: B Furnished: Unfurnished

This delightful two-bedroom house has been newly refurbished to a high standard, offering modern and comfortable living. As you enter, you are greeted by a versatile dining or study area that seamlessly flows into a cosy lounge.

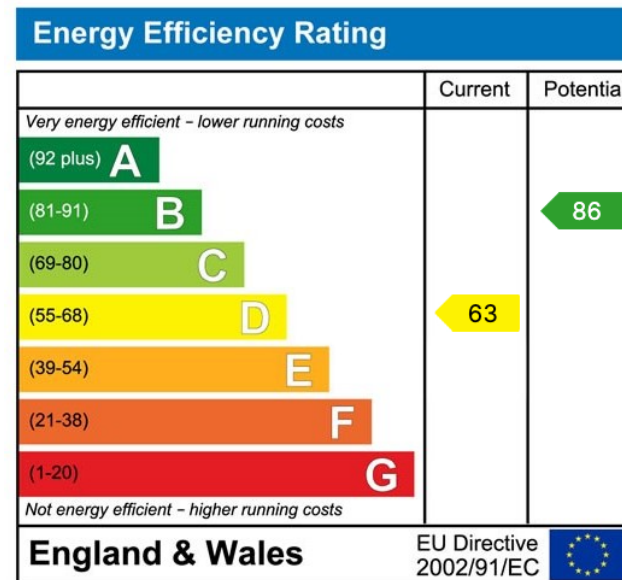
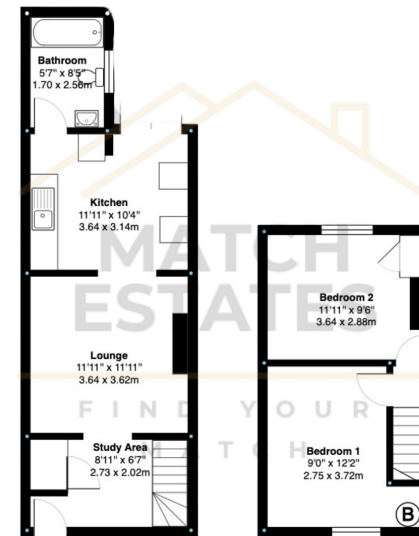
The lounge leads into a spacious, newly fitted kitchen, complete with double doors that open out to the garden. The kitchen is designed for both functionality and style, making it a perfect space for cooking and entertaining.

The ground floor also features a new three-piece bathroom suite, complete with a shower over the bath, providing a sleek and contemporary feel.

Upstairs, there are two generously sized double bedrooms, each offering ample space and natural light.

The garden at the rear of the property is thoughtfully designed.





01303 475085

Match Estates LTD, trading as Match Estates, is a private limited company: 15509408
 Registered Address: B3 Bouverie House, Folkestone, Kent, CT20 1AE
 VAT Registration Number: 464 1921 89

www.match-estates.co.uk

