



**MATCH
ESTATES**
FIND YOUR
MATCH

FOR SALE
01303 475085
www.match-estates.co.uk



Grasmere Gardens, Folkestone, CT19 5JN

Guide Price £325,000

2 1 1



GUIDE PRICE £325,000 - £350,000

This charming two-bedroom semi-detached bungalow is everything you've been searching for. Recently refurbished throughout, it offers a blank canvas for you to create your dream home, and is conveniently chain-free for a smooth purchase. Situated in a highly sought-after neighbourhood, this property combines modern living with a fantastic location.

The heart of the home is a very spacious lounge diner, bathed in natural light thanks to its south-facing aspect. Perfect for relaxing evenings or entertaining loved ones, this room also features a cosy log burner, ideal for creating a warm ambiance on chilly nights. The entire property has been recently refurbished, providing a fresh and contemporary feel. This means you can move straight in and start enjoying your new home without the hassle of renovations.

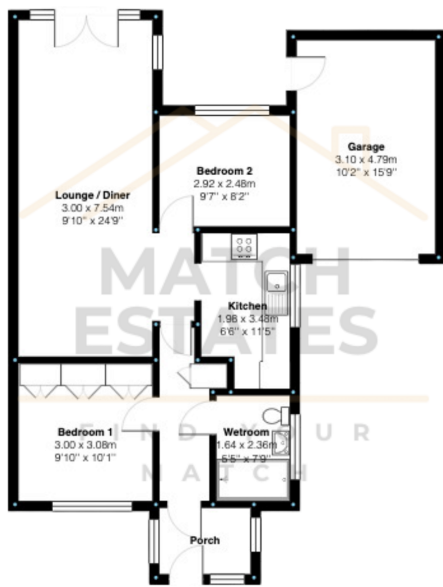
Step outside to your south-facing garden, a true sun trap perfect for soaking up the rays or enjoying summer evenings al fresco. The garden also boasts direct access to a green area, ideal for those who love spending time outdoors.

This property offers a wetroom for added convenience, alongside a garage with an electric door for secure parking. A driveway provides additional off-street parking.

This charming bungalow is situated in a popular area, offering a perfect blend of peace and quiet with easy access to local amenities.

Ready to Make it Yours? We expect a lot of interest in this delightful property, so don't delay! Contact us today to arrange a viewing.





- GUIDE PRICE £325,000 - £350,000
- No Onward Chain
- Recently Refurbished Bungalow
- South Facing Rear Garden
- Garage and Driveway
- Very Sought After Location



Energy Efficiency Rating		
	Current	Potential
<i>Very energy efficient - lower running costs</i>		
(92 plus) A		
(81-91) B		89
(69-80) C		
(55-68) D	60	
(39-54) E		
(21-38) F		
(1-20) G		
<i>Not energy efficient - higher running costs</i>		
England & Wales	EU Directive 2002/91/EC	

01303 475085

Match Estates LTD, trading as Match Estates, is a private limited company: 15509408
 Registered Address: B3 Bouverie House, Folkestone, Kent, CT20 1AE
 VAT Registration Number: 464 1921 89

www.match-estates.co.uk

