

NOVE

5 St. Marys Way, Thirsk

Thirsk

Guide Price £273,000

5 St. Marys Way

Thirsk, Thirsk

This detached bungalow, situated a short walk from the Towns amenities on a quiet cul-de-sac is offered to the market, chain free.

The property would benefit from some internal updating, though does already boast updated UPVC double Glazed doors and windows, conservatory, UPVC soffits and fascias and solar panels installed to the roof which will reduce electricity bills and provide a rebate payment from the energy supplier.

The bungalow is spacious internally and would allow owners to configure the property to suit their needs. Externally, a South West facing rear garden could become a fantastic space and plenty of parking is offered on the private driveway.

The property has a garage, with power and light, finished with an electric door with touch button control for seamless entry.

Council Tax band: D

Tenure: Freehold

- Detached Bungalow
- Two Bedrooms
- Conservatory
- Garage
- Solar Panels
- Development Potential
- Chain Free





Entrance Hall

To the front of the property, accessed via a UPVC double glazed door, offers access through to the living room.

Living Room

16' 8" x 12' 5" (5.09m x 3.79m)

A spacious lounge with large, UPVC, double glazed window to the front elevation. With a fitted gas fire and wall mounted radiator.

Kitchen

17' 0" x 9' 8" (5.17m x 2.94m)

The kitchen has a dual aspect, UPVC double Glazed windows and a UPVC door leading to the driveway and garage.

Inner Hall

The internal hall, offers access to all rooms and has two cupboards, one for storage, the other containing the water cylinder.

Bedroom One

16' 1" x 10' 8" (4.90m x 3.25m)

The primary bedroom is spacious and benefits from a wall mounted radiator and large, UPVC window.

Bedroom Two

11' 3" x 10' 3" (3.44m x 3.12m)

A generous second room, will comfortably hold a double bed. Offers access through to the conservatory. Could be ideally used for guests, an extra reception room or study.

Conservatory

18' 0" x 8' 10" (5.48m x 2.70m)

A fantastic space, looking out to the garden. With wall mounted radiator linked to the central heating system.



GARDEN

The rear garden is South West Facing, accessed via the conservatory in the property or via the private driveway. Mainly laid to lawn and containing a storage shed.

GARDEN

Lawned Garden to the front elevation, overlooking the cul-de-sac. Surrounded by a low level wall.

DRIVEWAY

3 Parking Spaces

A spacious driveway for multiple vehicles.

GARAGE

Single Garage

A single garage with electric roller door, operated by a key fob. The garage benefits from power and light and houses the controls for the solar panels.





My New Project

SUBMITTED BY
Nove Property
info@noveproperty.co.uk
01845470047

CREATED ON
2025-01-22

DETAILS
Total area: 94.21 m²
Living area: 80.87 m²
Floors: 1
Rooms: 11

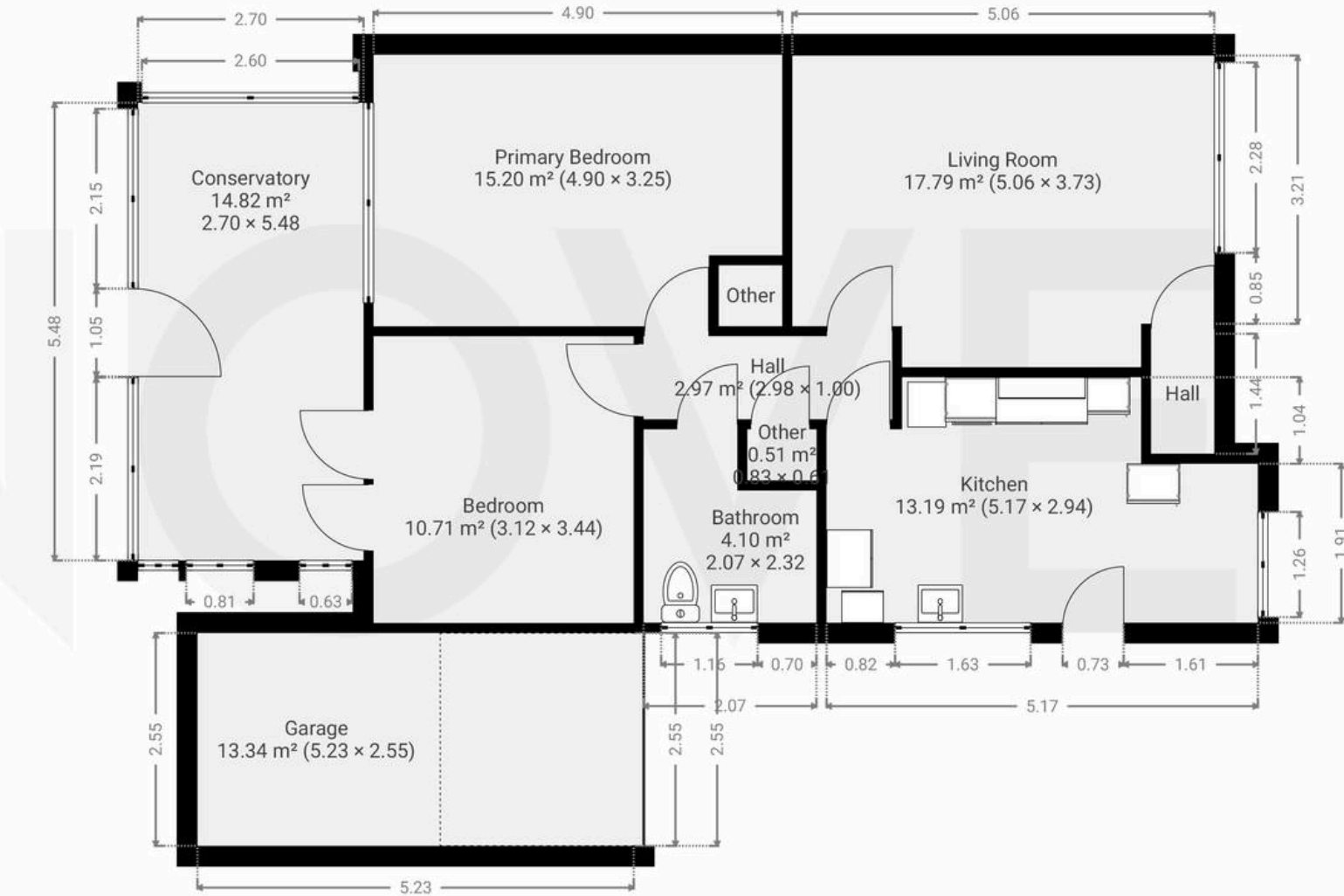
Nove
info@noveproperty.co.uk
www.noveproperty.co.uk
01845 407047

THIS FLOORPLAN IS PROVIDED WITHOUT
WARRANTY OF ANY KIND. SENSOPIA
DISCLAIMS ANY WARRANTY INCLUDING,
WITHOUT LIMITATION, SATISFACTORY QUALITY
OR ACCURACY OF DIMENSIONS.

0.0 0.5 1.0 1.5 2.0 2.5m
1:76

▼ Ground Floor

TOTAL AREA: 94.21 m² • LIVING AREA: 80.87 m² • ROOMS: 11



NOVE



Nove

9 Bridge Street, Thirsk - YO7 1AD

01845 407047

info@noveproperty.co.uk

noveproperty.co.uk

