



OFFERS OVER

£133,000

Woodburn Avenue

Alexandria, G83 8AS

## PROPERTY SUMMARY

\*\*\* CLOSING DATE THURSDAY 26TH JUNE 2025 at 12:00 NOON \*\*\*

Haxton Property is delighted to present this exquisite two-bedroom Mid-Terrace Villa, perfectly positioned in a sought-after location with breathtaking open views across the parkland. Immaculately presented and in true walk-in condition, this charming home seamlessly blends modern sophistication with inviting comfort.

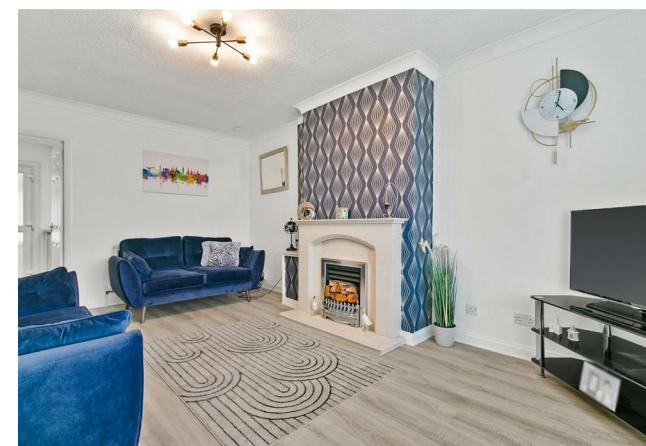
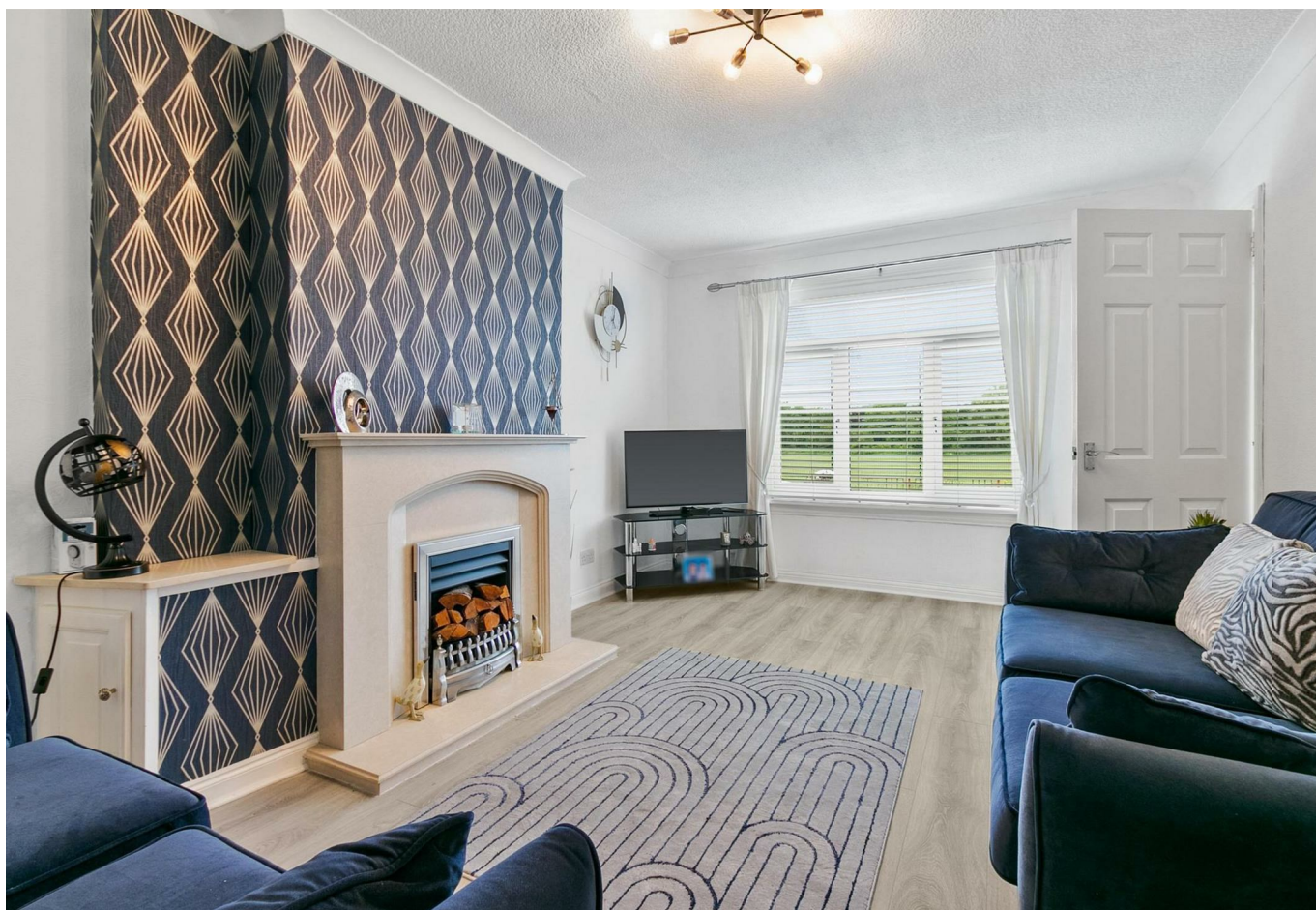
2



1



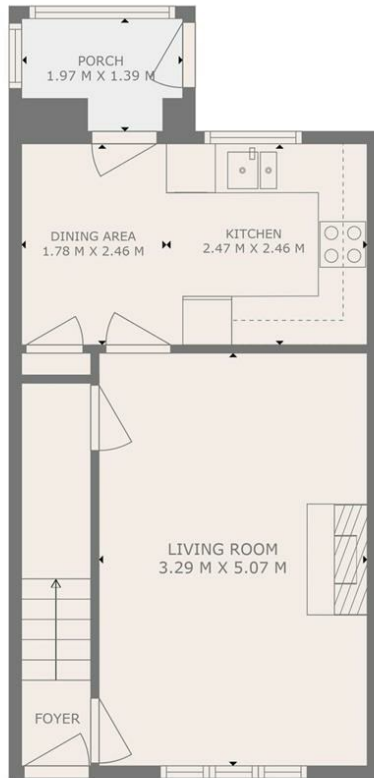
1



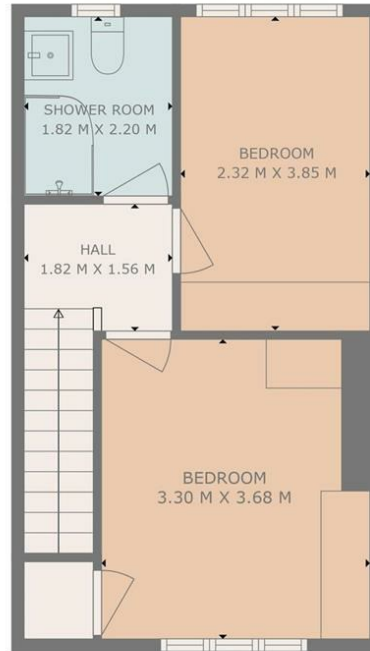








FLOOR 1



FLOOR 2

**TOTAL: 65 m<sup>2</sup>**  
 FLOOR 1: 33 m<sup>2</sup>, FLOOR 2: 32 m<sup>2</sup>  
 EXCLUDED AREAS: PORCH: 3 m<sup>2</sup>  
 WALLS: 8 m<sup>2</sup>

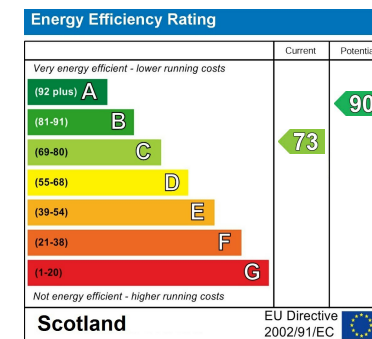
THIS PLAN IS FOR LAYOUT GUIDANCE ONLY AND SHOULD NOT BE RELIED UPON AS FACT

**LOCAL AUTHORITY**  
 West Dunbartonshire

**TENURE**  
 Freehold

**COUNCIL TAX BAND**  
 B

**VIEWINGS**  
 By prior appointment only



Agents Note: Whilst every care has been taken to prepare these particulars, they are for guidance purposes only. All measurements are approximate and are for general guidance purposes only and whilst every care has been taken to ensure their accuracy, they should not be relied upon and potential buyers/tenants are advised to recheck the measurements



**HAXTON**  
 PROPERTY

**OFFICE ADDRESS**

15 Station Road  
 Dumbarton  
 Dunbartonshire  
 G82 1SA

**OFFICE DETAILS**

01389 719000  
 info@haxtonproperty.co.uk  
 www.haxtonproperty.co.uk