

# LA FINESTRA SUL LAGO



## Localizzazione del nuovo intervento edilizio



## Residenza "La finestra sul lago"

## Ingrandimento del luogo dell' intervento edilizio



# Residenza "La finestra sul lago" Parzanica (BG)

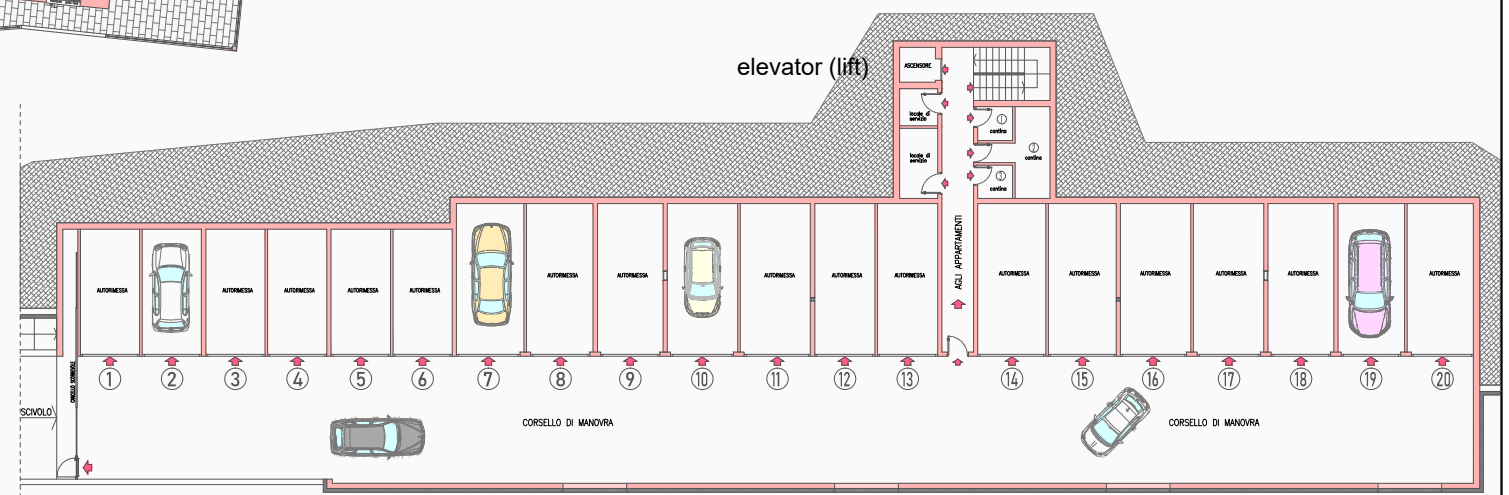
GROUND FLOOR



FIRST FLOOR



UNDERGROUND FLOOR

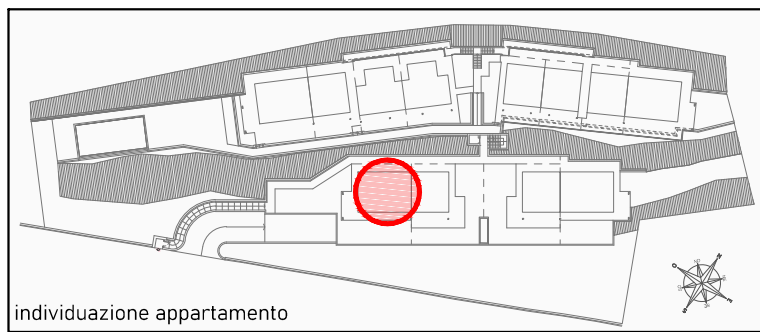
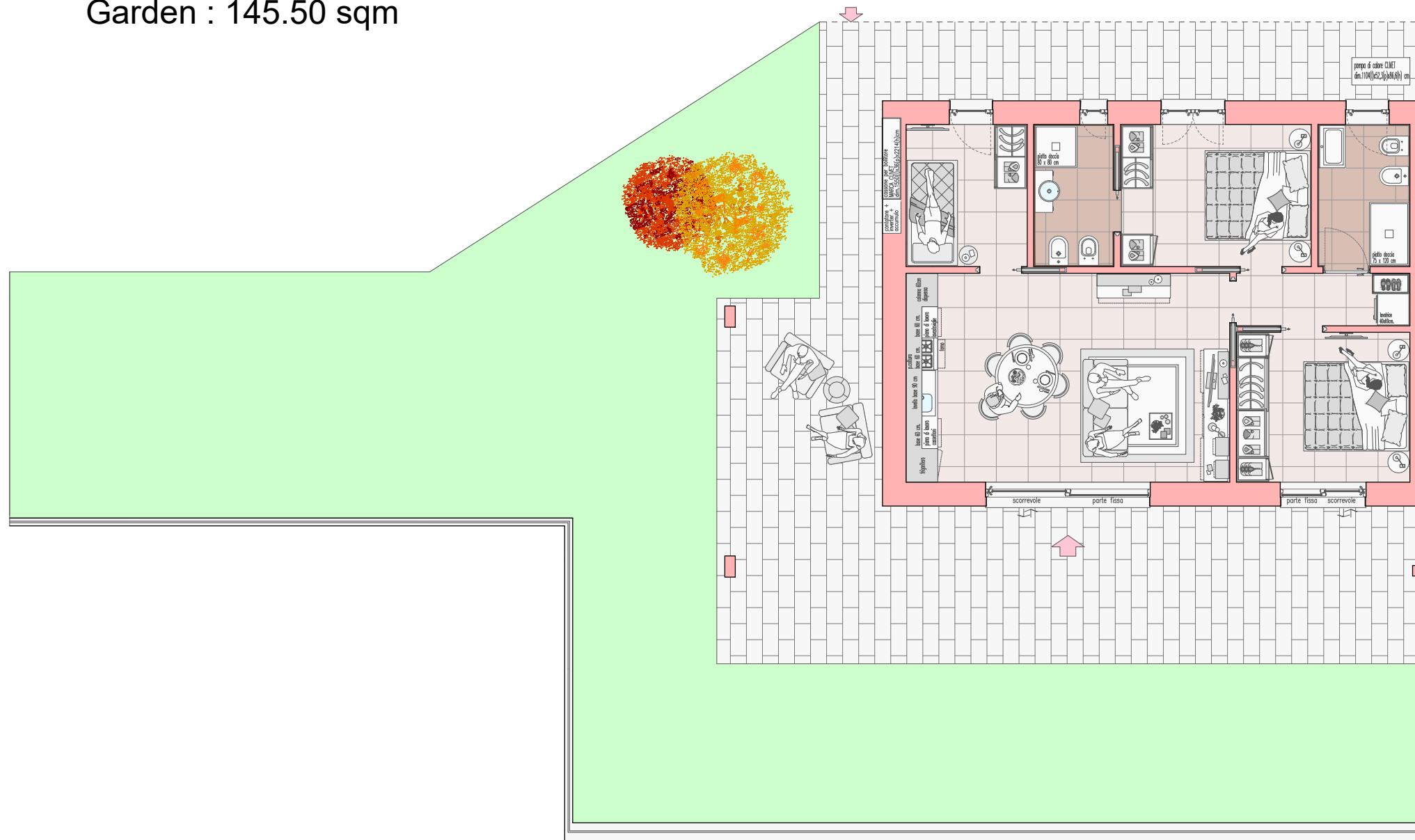


Residenza "La Finestra sul Lago"  
Appartamento n. 1 - piano terra  
scala 1:100

GROUND FLOOR APARTMENT  
3 bedrooms  
PRICE: 385.000 €

SUPERFICI COMMERCIALI	
Appartamento	78,35 mq.
Lastricato	74,00 mq.
Giardino	145,50 mq.

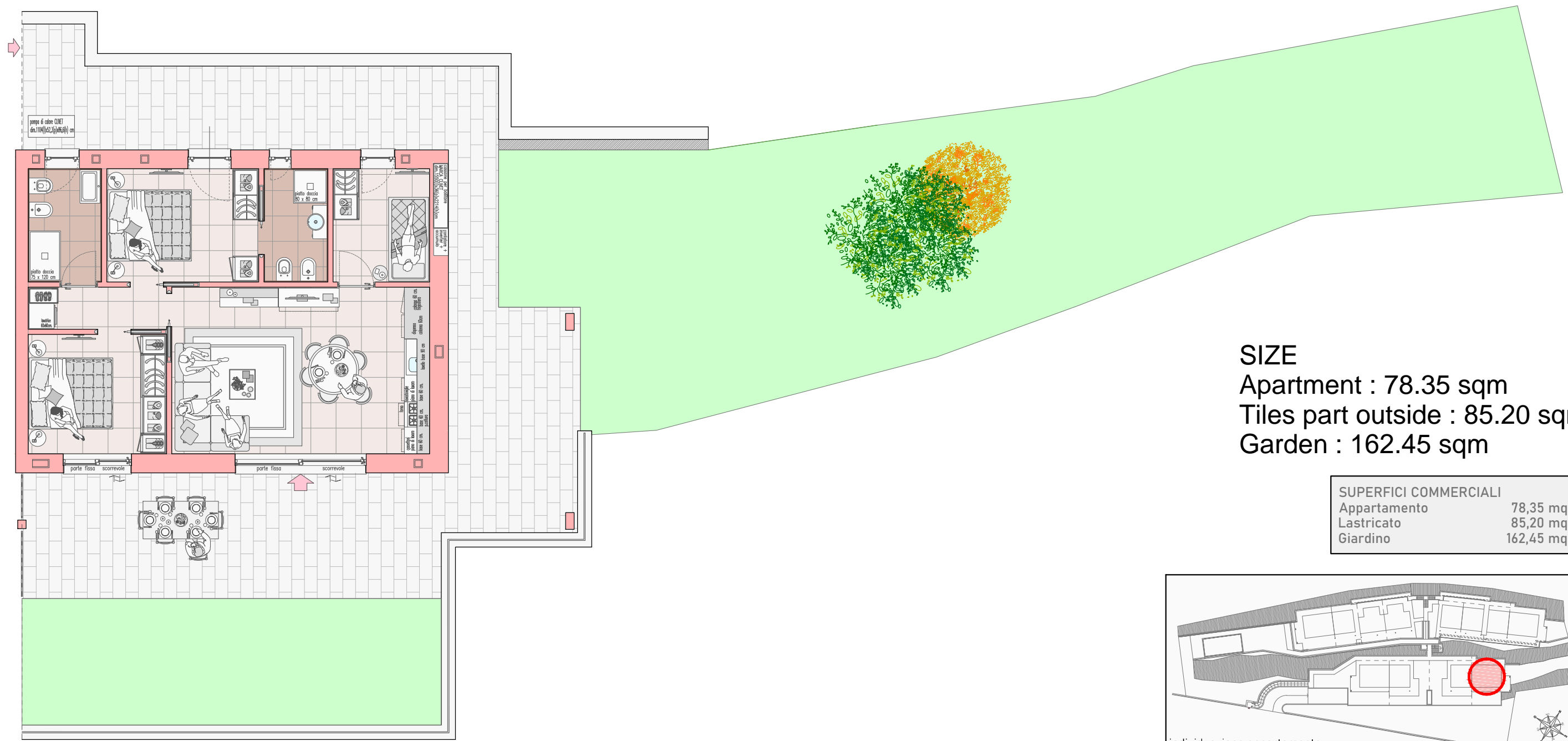
SIZE  
Apartment : 78.35 sqm  
Tiles part outside : 74.00 sqm  
Garden : 145.50 sqm



individuazione appartamento

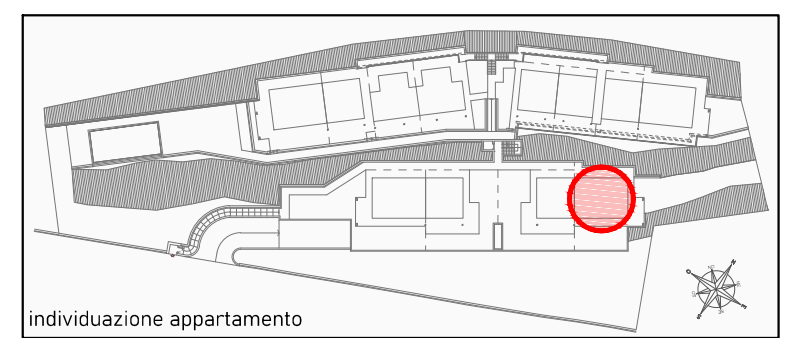
Residenza "La Finestra sul Lago"  
 Appartamento n. 4 - piano terra  
 scala 1:100

GROUND FLOOR APARTMENT  
 3 bedrooms  
 PRICE: 415.000 €



SIZE  
 Apartment : 78.35 sqm  
 Tiles part outside : 85.20 sqm  
 Garden : 162.45 sqm

SUPERFICI COMMERCIALI	
Appartamento	78,35 mq.
Lastricato	85,20 mq.
Giardino	162,45 mq.



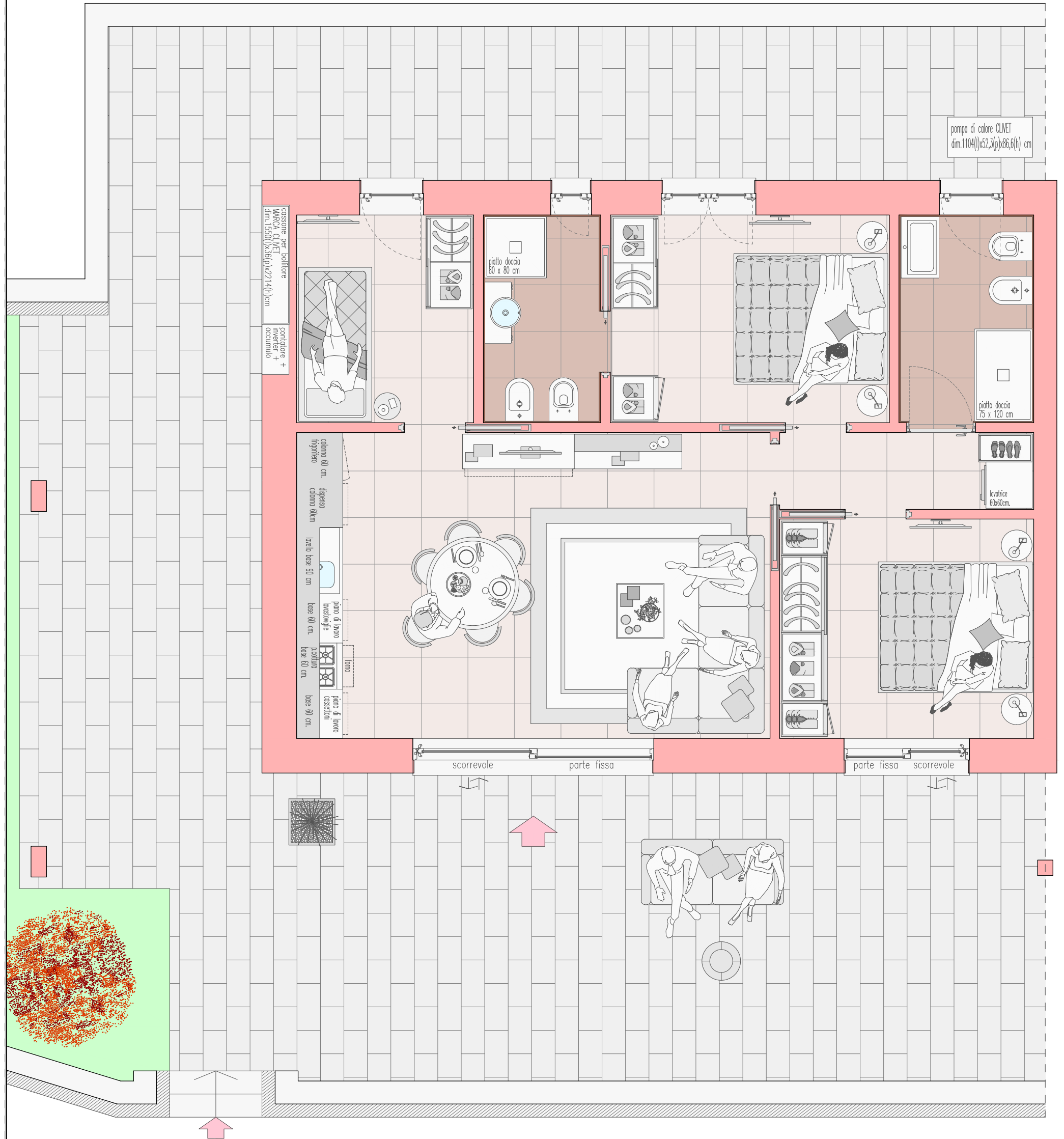
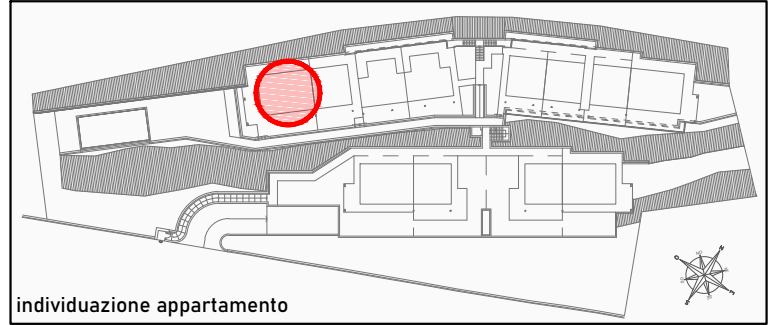
individuazione appartamento

**Residenza "La Finestra sul Lago"**  
**Appartamento n. 7 - piano terra**  
 scala 1:50

**GROUND FLOOR APARTMENT**  
 3 Bedrooms  
 Price: 390.000 €

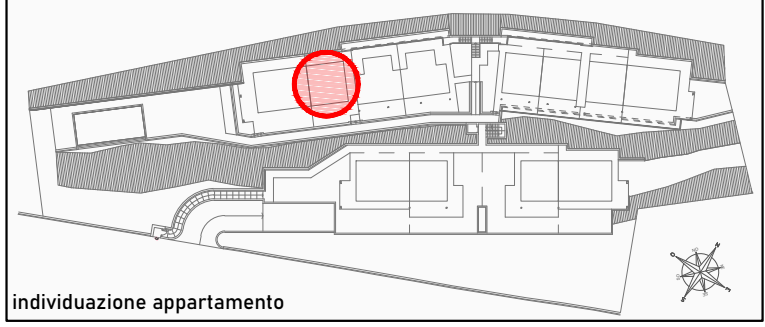
SUPERFICI COMMERCIALI	
Appartamento	78,35 mq.
Lastricato	104,90 mq.
Giardino	20,70 mq.

**SIZE**  
 Apartment 78.35 sqm  
 Tiles part: 104.90 sqm  
 Garden: 20.70 sqm



**Residenza "La Finestra sul Lago"**  
 Appartamento n. 8 - piano terra  
 scala 1:50

**SUPERFICI COMMERCIALI**  
 Appartamento 55,25 mq.  
 Lastricato 48,55 mq.



individuazione appartamento

First floor apartment  
 2 bedrooms  
 Price : 270.000 €

**SIZE**  
 Apartment 55.25 sqm  
 Tiles part: 48.55 sqm

