



MAYFAIR

PRIVATE OFFICE



MAYFAIR PRIVATE OFFICE

£2,200,000

W C 2

21 Broad Court

- Leasehold -

Contemporary 2 bed lateral flat in
prime Covent Garden



MAYFAIR PRIVATE OFFICE



MAYFAIR PRIVATE OFFICE



MAYFAIR PRIVATE OFFICE



MAYFAIR PRIVATE OFFICE



DESCRIPTION



A beautifully designed bespoke lateral apartment situated on one of the area's most historic pedestrianised streets, Broad Court.

Located within an imposing redbrick Victorian building in the midst of Covent Garden, close to the Royal Opera House and the vibrant Piazza.

The apartment is light and airy and comprises of a lateral open-plan reception room with a high-quality and modern kitchen, bespoke original features, and a tranquil bathroom fitted with a bath and a shower. The apartment also benefits from a good-sized flexible office/bedroom space that can be opened into the living room for entertaining. With original casement windows, wooden floors and impressive ceiling height this stunning property is finished to an immaculate standard and makes an ideal central London home for anyone looking to live in the heart of the City.

Broad Court is in a fantastic position for transport links with Covent Garden, Leicester Square and Charing Cross Stations all within close proximity.

Leasehold - 990+ yrs

Council Tax - H

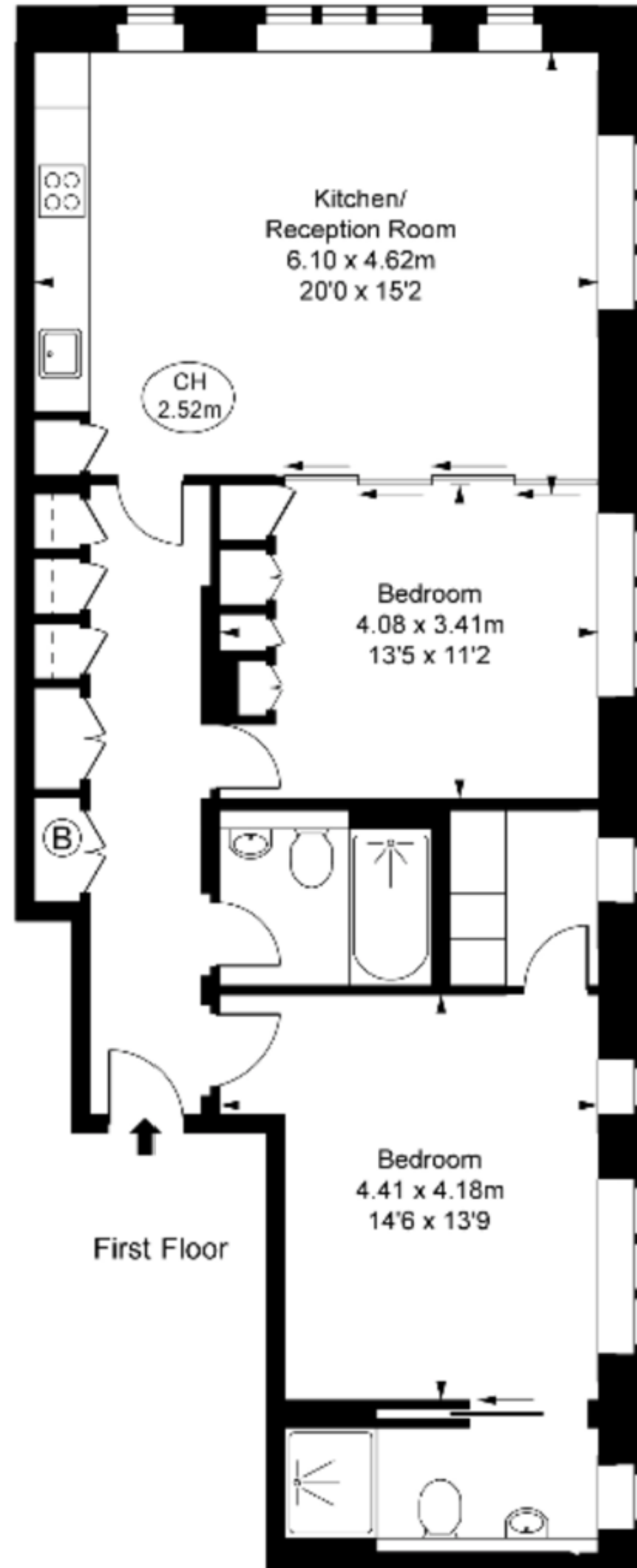
MAYFAIR PRIVATE OFFICE

Broad Court,
Covent Garden, WC2B

Approximate Gross Internal Area
84.77 sq m / 912 sq ft

(Including restricted height
under 1.5m (-----))

(CH = Ceiling Heights)





MAYFAIR

PRIVATE OFFICE