



**MAYFAIR**

PRIVATE OFFICE



MAYFAIR PRIVATE OFFICE

---

£2,300,000

W C 2

---

19-20 Romilly Street

- Leasehold -

Large 3-bed lateral penthouse in Soho





MAYFAIR PRIVATE OFFICE

---





---

## DESCRIPTION



The apartment's contemporary design has been finished with natural materials, engineered oak flooring throughout and natural stone flooring in the bathrooms.

The kitchen presents timber-veneered units with stone worktops and Miele appliances whilst underfloor heating and comfort cooling ensure the apartment maintains the perfect balance throughout the year.

The three double bedrooms benefit from en-suite bathrooms with ample storage space.

This beautiful home is also serviced by a lift and an exclusive weekday concierge service.

The building comprises of 5 self contained apartments with exposed brick staircase and communal post area on entrance.

Leasehold - 990+ yrs

MAYFAIR PRIVATE OFFICE



Romilly Street, W1D  
Approximate Gross Internal Area  
114.23 sq m / 1,230 sq ft

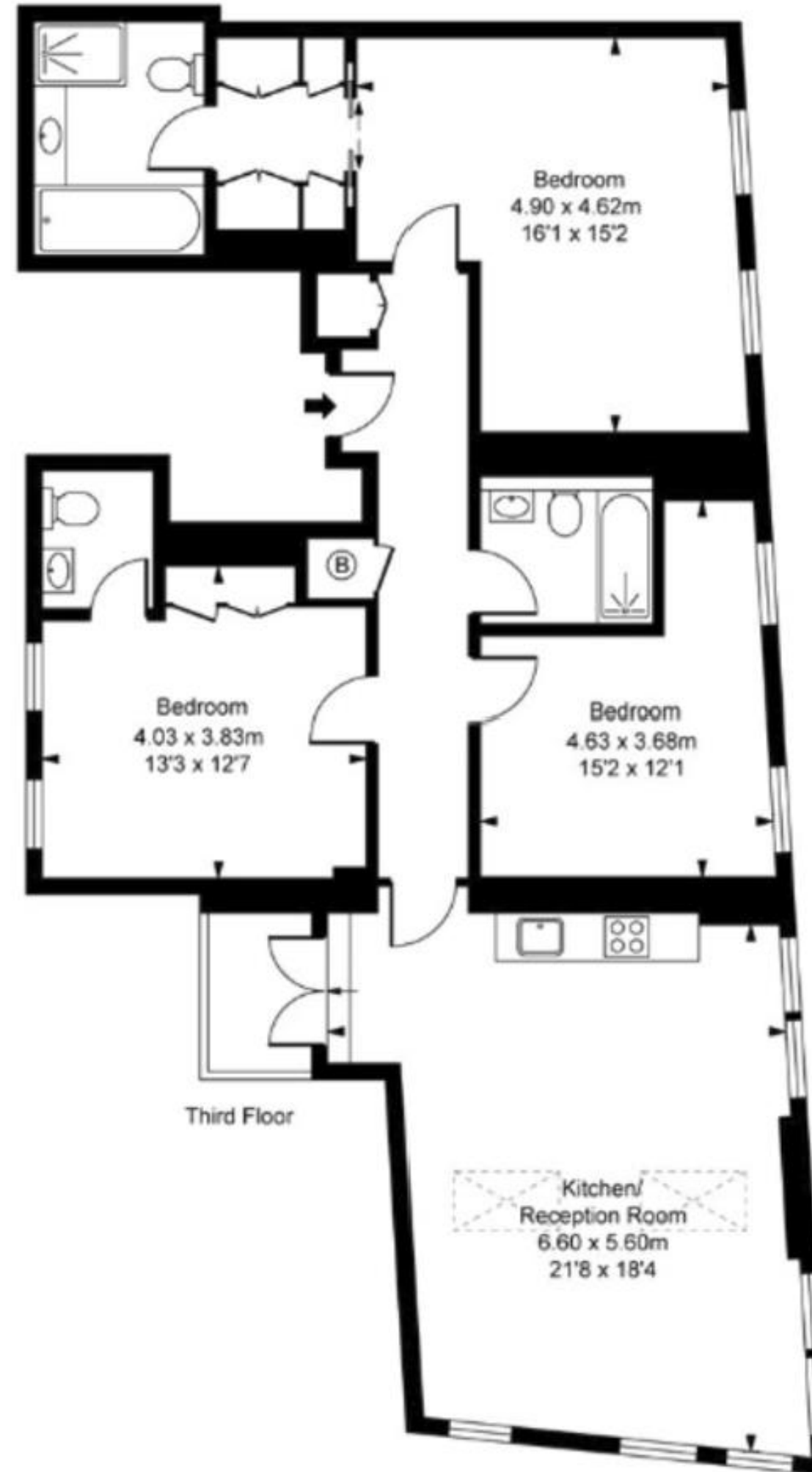


ILLUSTRATION FOR IDENTIFICATION PURPOSES ONLY  
ALL MEASUREMENTS ARE MAXIMUM, AND INCLUDE WINDOW BAYS AND WARDROBES WHERE APPLICABLE  
THIS PLAN MUST NOT BE REPRODUCED BY ANY OTHER PERSON WITHOUT PERMISSION



**MAYFAIR**

PRIVATE OFFICE