



MAYFAIR

PRIVATE OFFICE



MAYFAIR PRIVATE OFFICE

£2,300,000

W C 2

19-20 Romilly Street

- Leasehold -

Large 3-bed lateral penthouse in Soho



MAYFAIR PRIVATE OFFICE



DESCRIPTION



The apartment's contemporary design has been finished with natural materials, engineered oak flooring throughout and natural stone flooring in the bathrooms.

The kitchen presents timber-veneered units with stone worktops and Miele appliances whilst underfloor heating and comfort cooling ensure the apartment maintains the perfect balance throughout the year.

The two double bedrooms benefit from adjoining balconies and share a large family bathroom with a bathtub.

This beautiful home is also serviced by a lift and an exclusive weekday concierge service.

The Colyer development comprises 14 homes, including a selection of studios, two, and three bedroom apartments with one lateral penthouse.

Leasehold - 990+ yrs

Council Tax - H

MAYFAIR PRIVATE OFFICE



Romilly Street, W1D
Approximate Gross Internal Area
114.23 sq m / 1,230 sq ft

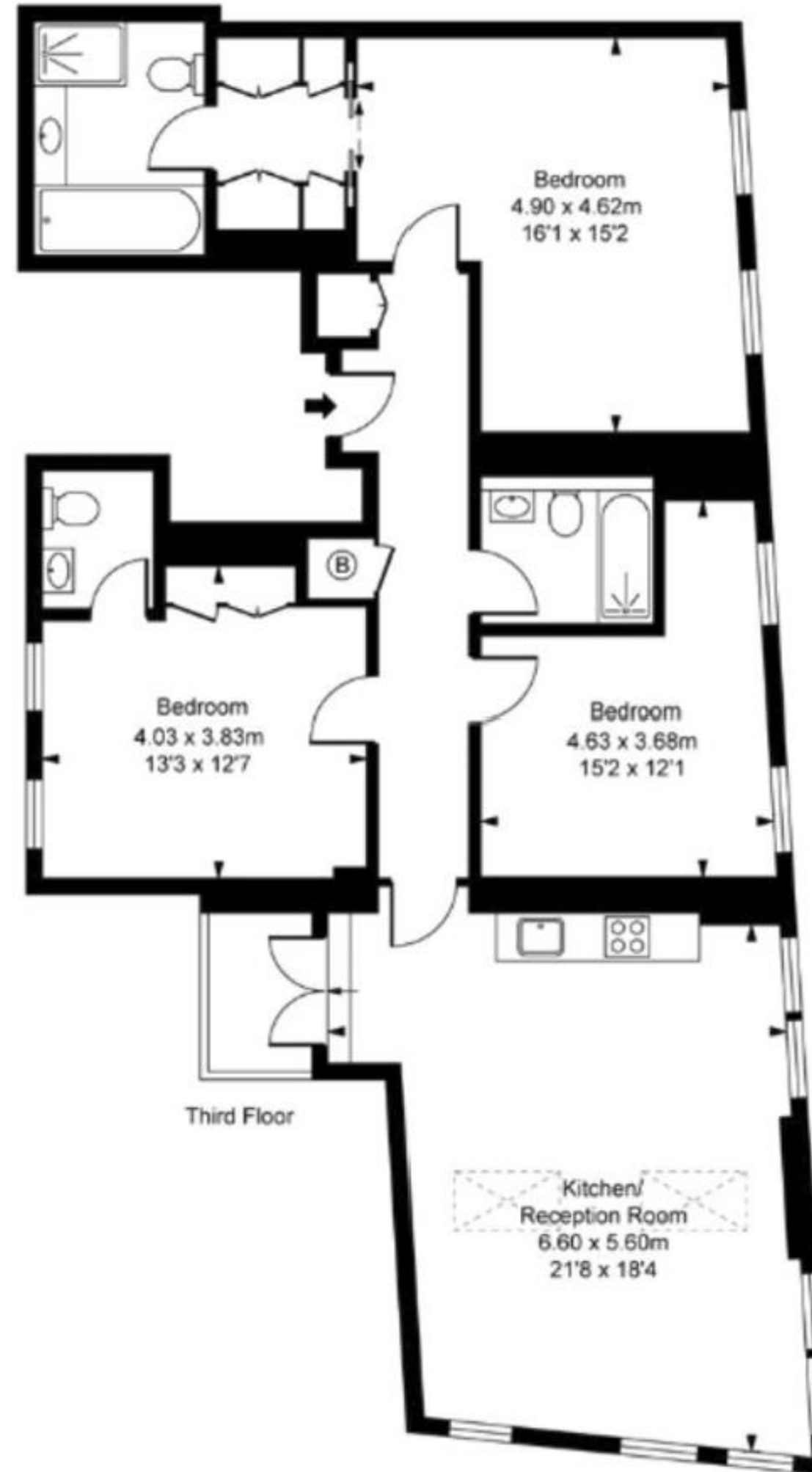


ILLUSTRATION FOR IDENTIFICATION PURPOSES ONLY
ALL MEASUREMENTS ARE MAXIMUM, AND INCLUDE WINDOW BAYS AND WARDROBES WHERE APPLICABLE
THIS PLAN MUST NOT BE REPRODUCED BY ANY OTHER PERSON WITHOUT PERMISSION



MAYFAIR

PRIVATE OFFICE