



MAYFAIR

PRIVATE OFFICE



MAYFAIR PRIVATE OFFICE

£1,300,000

W C 2

The Hexagon Building

- Leasehold -

A stunning 1-bed lateral apartment
24 hr concierge with lift



MAYFAIR PRIVATE OFFICE



MAYFAIR PRIVATE OFFICE



DESCRIPTION



Situated on the sixth floor of the iconic Hexagon building this residence showcases tasteful interiors and enjoys an abundance of natural light, with charming views overlooking Parker street just moments away from Covent Garden piazza and green spaces of Lincoln Inn Fields. Its orientation is towards the Northwest.

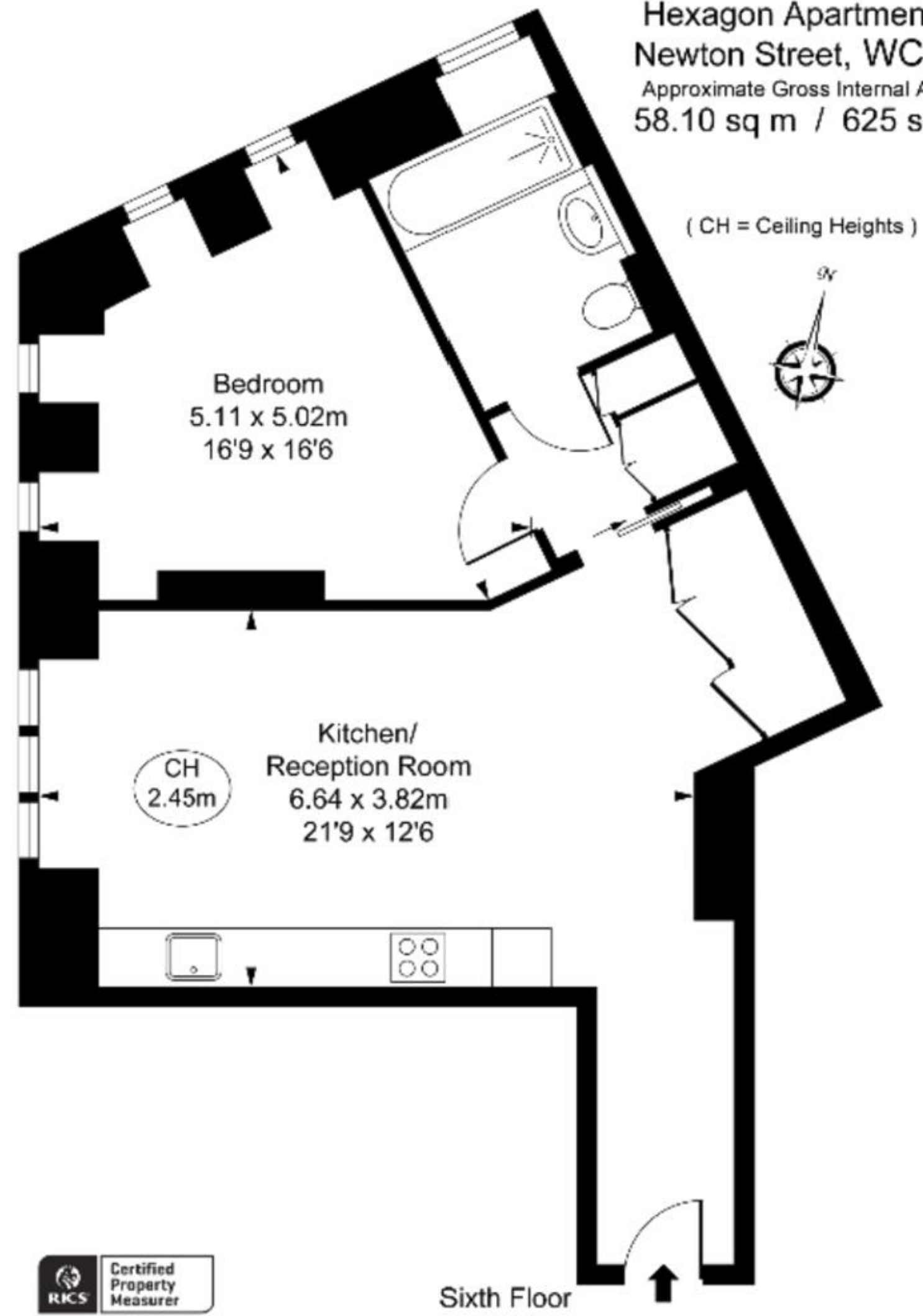
Step into the generously sized open-plan reception/dining area, seamlessly connected to a sleek and modern kitchen equipped with top-of-the-range Miele appliances.

The bedroom is elegantly appointed with ample storage space, while comfort cooling enhances the ambiance in both the bedroom and living area, complemented by the timeless allure of oak linear flooring. The development benefits from 24 hr concierge, bike storage and lift access.

Leasehold - 990+ yrs
Service Charge - £8k p.a
Council Tax - G
Borough of Camden

MAYFAIR PRIVATE OFFICE

Hexagon Apartments,
Newton Street, WC2B
Approximate Gross Internal Area
58.10 sq m / 625 sq ft



This plan is not to scale. It is for guidance and not for valuation purposes.
All measurements and areas are approximate only, and have been prepared in accordance with the current edition of the RICS Code of Measuring Practice.
© Fulham Performance



MAYFAIR

PRIVATE OFFICE