



MAYFAIR

PRIVATE OFFICE



MAYFAIR PRIVATE OFFICE

£1,050,000

W C 2

Bedford Street

- Leasehold -



MAYFAIR PRIVATE OFFICE



DESCRIPTION



Introducing a stunning one-bedroom apartment located on the third floor of a 19th-century heritage building at 2-3 Bedford Street, Covent Garden.

The apartment features high ceilings and beautiful herringbone-engineered oak flooring, adding to its timeless elegance. The spacious open-plan living area includes a modern Siemens kitchen, a large dining room table and a separate seating area, all framed by a large sash window that floods the space with natural light.

The generous double bedroom boasts an original ocular window, providing a unique historical touch, while offering ample storage. The luxurious bathroom is designed with premium fittings, combining contemporary style with comfort. There is comfort cooling throughout the apartment and underfloor heating in the bathroom. Lift access to all apartments.

Leasehold - 990 years

Council tax Band - E

Service charge - £5k per annum

2, 2-3 Bedford Street, WC2

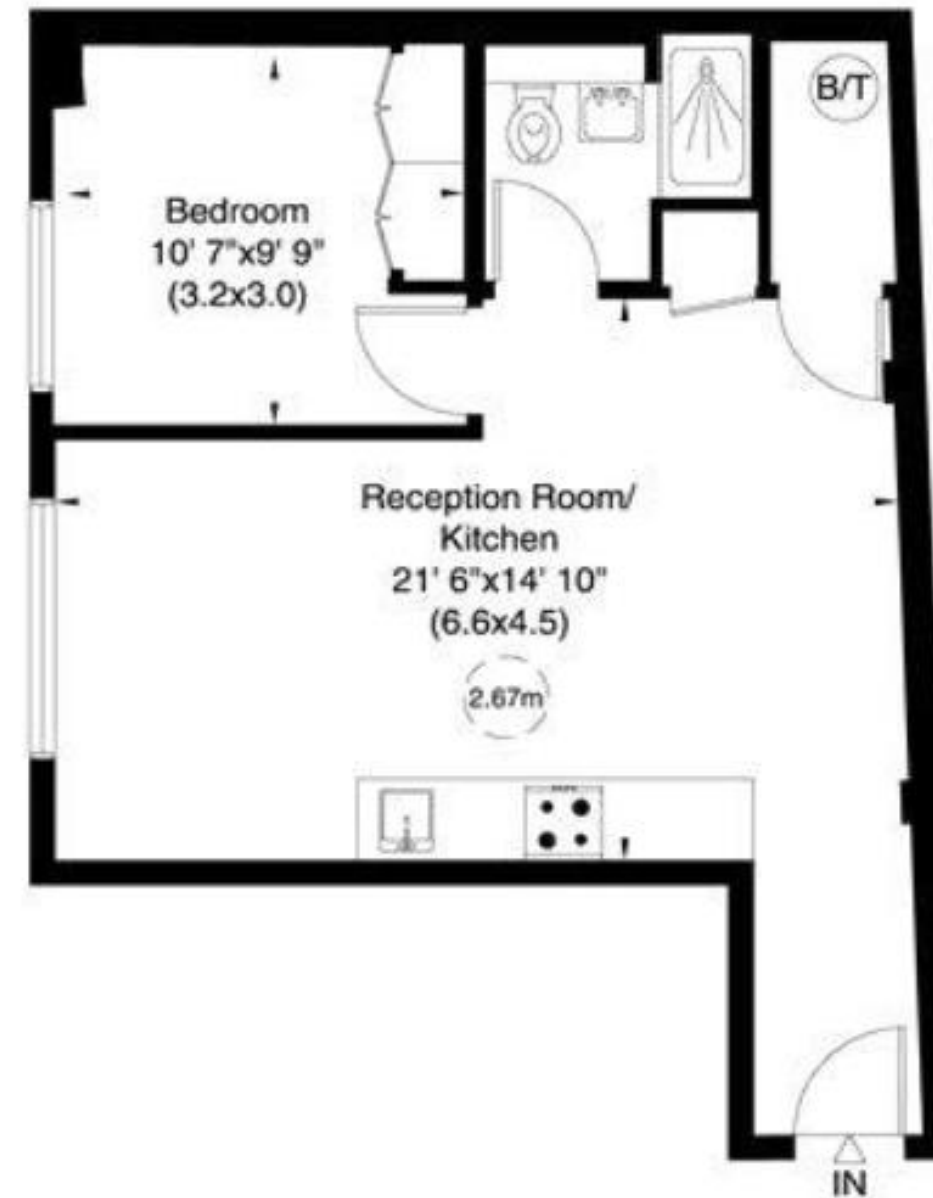
Gross internal area (approx.)

46 Sq m (492 Sq ft)

For identification only, Not to Scale



Floor Plan by **capital group** 020 8671 7722



First Floor



MAYFAIR

PRIVATE OFFICE