



MAYFAIR

PRIVATE OFFICE



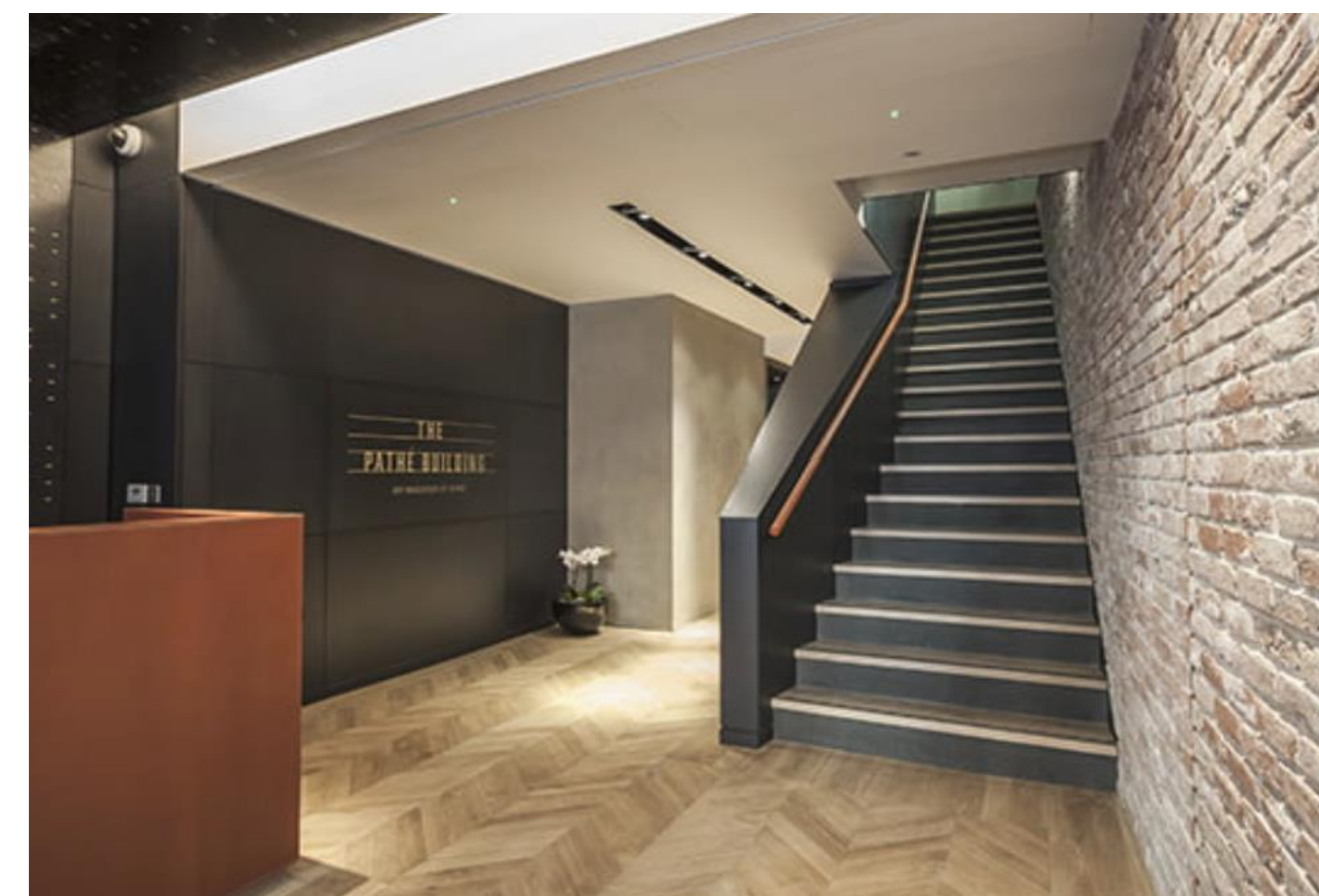
MAYFAIR PRIVATE OFFICE

£1,100,000

W1

Pathe Building

- Leasehold -



MAYFAIR PRIVATE OFFICE



DESCRIPTION



A rare opportunity to acquire a modern one-bedroom apartment in the iconic Pathé Film Studios, located in the heart of Soho.

Situated at the back of the building, this modern one-bedroom apartment offers a tranquil living environment amidst the vibrant heart of Soho.

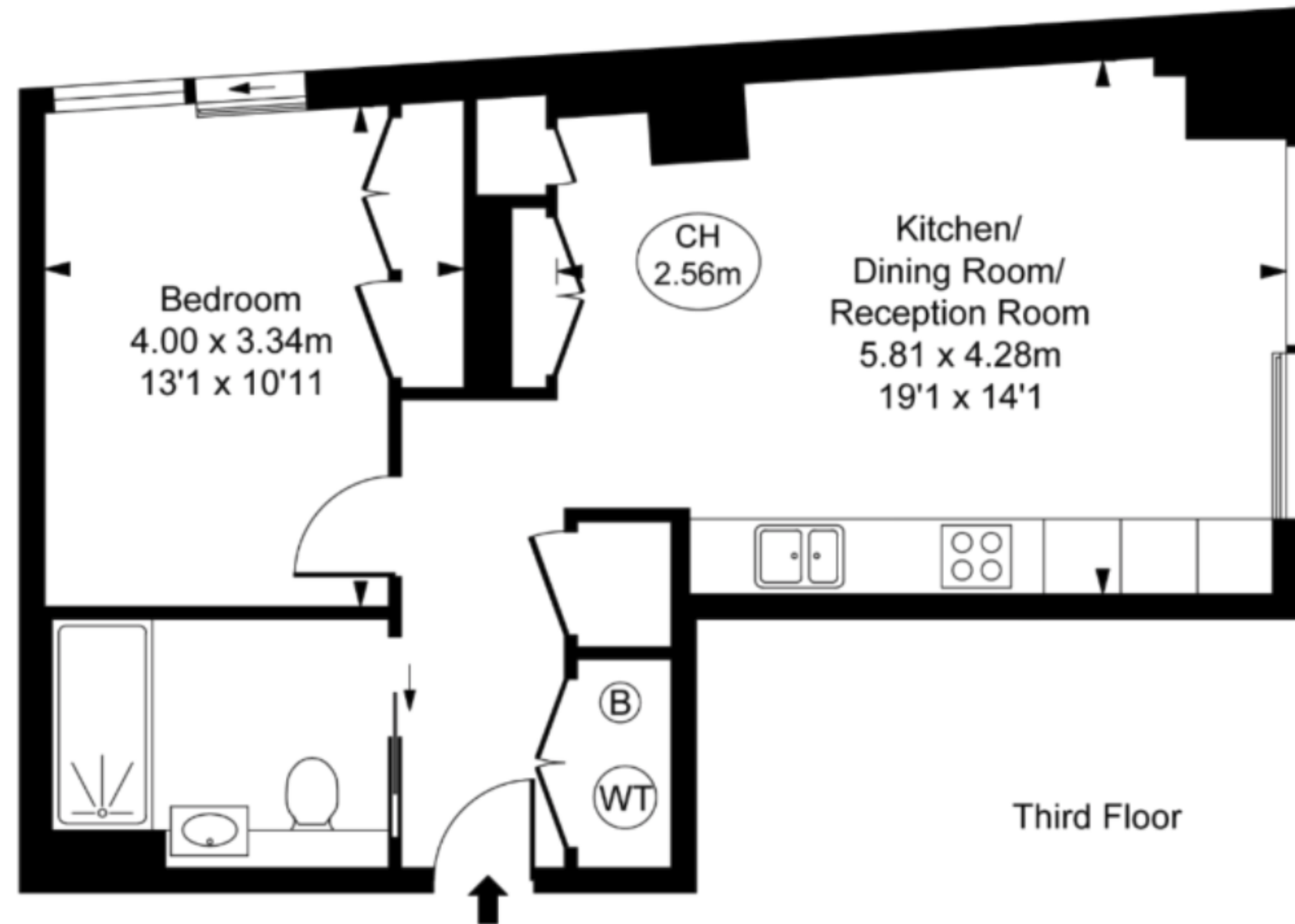
The perfect pied-à-terre in central London, the apartment features an open-plan Miele kitchen and living area with floor-to-ceiling windows, flooding the space with natural light.

Enjoy comfort cooling and underfloor heating throughout. The generous double bedroom provides ample storage, and the luxurious bathroom boasts premium fittings and a sleek design.

Leasehold - 995 year
Council tax Band - E
Service charge - £7k per annum



**Pathe Buildings,
Wardour Street, W1F**
Approximate Gross Internal Area
49.71 sq m / 535 sq ft
(CH = Ceiling Heights)



This plan is not to scale. It is for guidance and not for valuation purposes.
All measurements and areas are approximate only, and have been prepared in accordance with the current edition of the RICS Code of Measuring Practice.
© Fulham Performance



MAYFAIR

PRIVATE OFFICE