



Off Croft Mead, Nuneaton, CV10 9UD

Loveitts

PART OF | SHELDON BOSLEY KNIGHT

Property Description

MUST BE SEEN, 2 BEDROOM BRAND NEW HOME SET WITHIN A QUIET CUL-DE-SAC LOCATION IN ANSLEY VILLAGE, NUNEATON. This fantastic home comprises: beautifully fitted kitchen/dining to the rear with patio doors leading to a good sized rear garden. This fabulous kitchen comprises integrated appliances and plenty of space for a dining table for those evenings of socialising with friends and family. This fabulous homes also comprises; spacious lounge to the front and downstairs cloaks with built in vanity unit. The first floor comprises two bedrooms; modern part tiled, high specification family bathroom with shower cubicle. To the rear is a good sized split level turfed garden including a generous sized patio area.

This home has been built to a very high standard and specification.

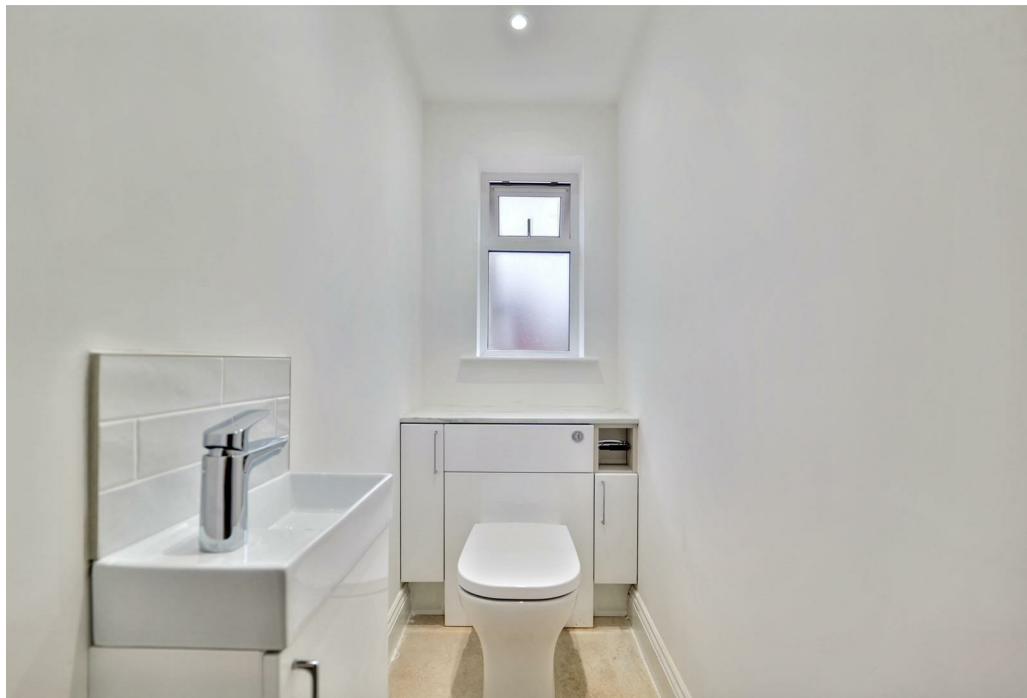
An ideal first home or for someone looking to down size, this property really must be viewed, comes with 2 parking spaces included.

To arrange a viewing please contact our New Homes office on 024 7652 7773.

Services: Mains Gas, Electricity. Water and Sewerage will be supplied to the property (No tests have been carried out, therefore, we are unable to confirm connection).

Please note that this home is 'handed' to that of the attached floorplan.







Key Features

- DO NOT MISS OUT! - MAKE YOUR APPOINTMENT TO VIEW TODAY!
- BRAND NEW HOME!! BUILT AND READY TO MOVE INTO!
- NO STAMP DUTY FOR FIRST TIME BUYERS!
- SMALL DEVELOPMENT OF ONLY 8 HOMES
- PRIVATE CUL DE SAC LOCATION
- GREAT STARTER HOME OR FOR THOSE DOWNSIZING
- HIGH SPECIFICATION THROUGHOUT
- BUILT AND READY TO MOVE INTO!
- UNDERFLOOR HEATING TO GROUND FLOOR & EV CHARGING POINT
- TWO ALLOCATED PARKING SPACES

£230,950