



NEW HOME

Woodlands Road, Bedworth, CV12 0AD

Loveitts

PART OF | SHELDON BOSLEY KNIGHT

Property Description

A beautiful, 3-bedroom family home with private driveway for two cars. The Warwick features an open plan kitchen / dining area with a bespoke integrated kitchen and breakfast bar and French doors leading through to the rear garden. Double doors also separate the kitchen / dining from the living room, creating flexibility in the space, and there is a ground floor WC. Upstairs are three double bedrooms. The master includes an en-suite with a shower whilst the other bedrooms are served by a family bathroom.

Please ask about the Premium Buyers Package available on this plot.

Please note: There is an annual estate charge of £410.

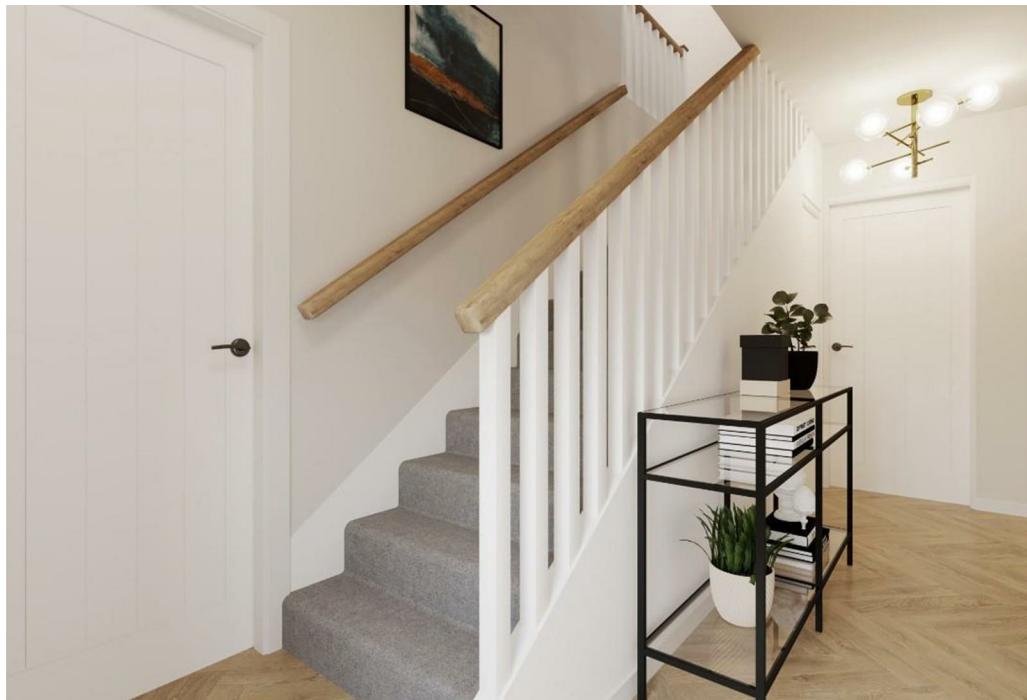
Viewing by appointment only, book your appointment now! 024 7634 7676

Loveitts will pass any information submitted by the buyer directly to Cartwright Homes

Photos are images from the property, which is now completed, and we use these for indicative purposes

Services: Mains Gas, Electricity & Water & Sewerage will be supplied to the property (No tests have been carried out, therefore, we are unable to confirm connection).







Key Features

- ***STAMP DUTY PAID IF RESERVED BEFORE CHRISTMAS***
- BRAND NEW HOMES ON A SMALL DEVELOPMENT OF ONLY 9 HOMES
- 10 YEAR LABC WARRANTY
- 3 BEDROOM DETACHED HOME
- PARKING FOR 2 CARS
- PERSONALISE YOUR SPECIFICATION!!
- ASPIRATIONAL LOCATION
- KITCHEN/DINER
- OVERLOOKING BEAUTIFUL VIEWS FROM THE FRONT ELEVATION
- BOOK YOUR APPOINTMENT TODAY!!

£326,995