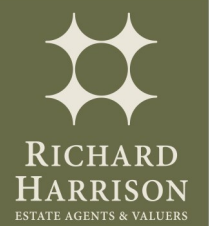




Fairmeadows Way | Loughborough | LE11 2QT

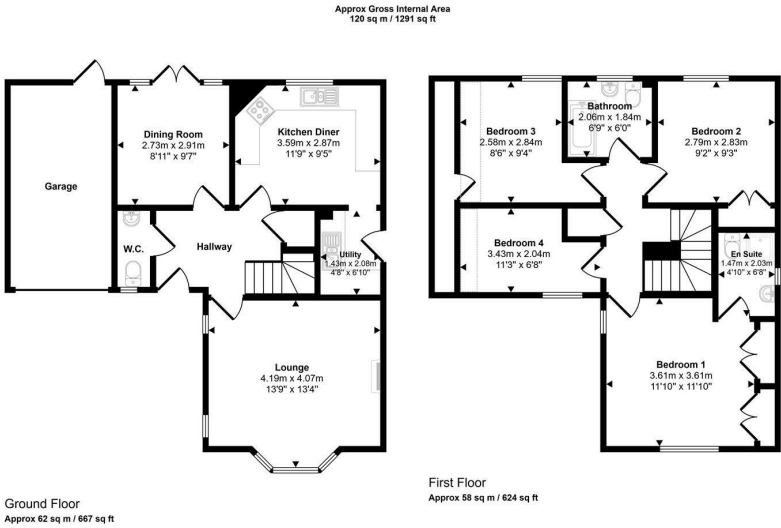
Asking price £379,950



Fairmeadows Way |
Loughborough | LE11 2QT
Asking price £379,950

**** COMING SOON ** CONTACT US TO REGISTER FOR A VIEWING ****

Set in a lovely position opposite a green space, this 4 bed detached home is an ideal family property located in this highly popular area close to Woodbrook Secondary School and Outwoods Edge Primary School. The accommodation comprises hallway, w/c, lounge, dining room, kitchen and utility room. The first floor landing gives way to 4 bedrooms, en-suite and family bathroom. Outside is parking for two cars, garage and gardens front and rear.



Energy Efficiency Rating		
	Current	Potential
Very energy efficient - lower running costs		
(92 plus) A		
(81-91) B		
(69-80) C		
(55-68) D		
(39-54) E	55	71
(21-38) F		
(1-20) G		
Not energy efficient - higher running costs		
England & Wales		EU Directive 2002/91/EC

16 Churchgate
Loughborough
Leicestershire
LE11 1UD

01509 977 889

sales@richard-harrison.co.uk