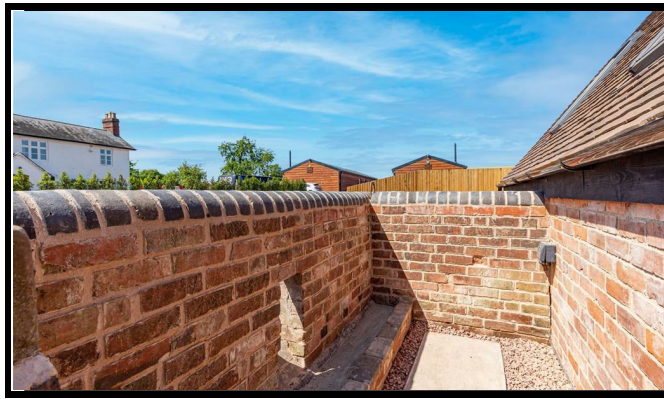
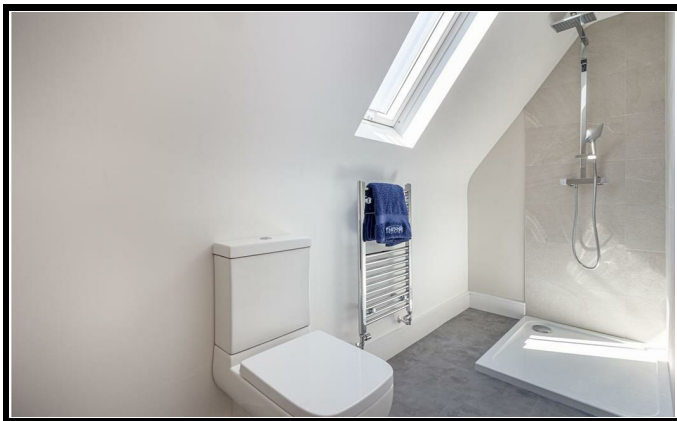
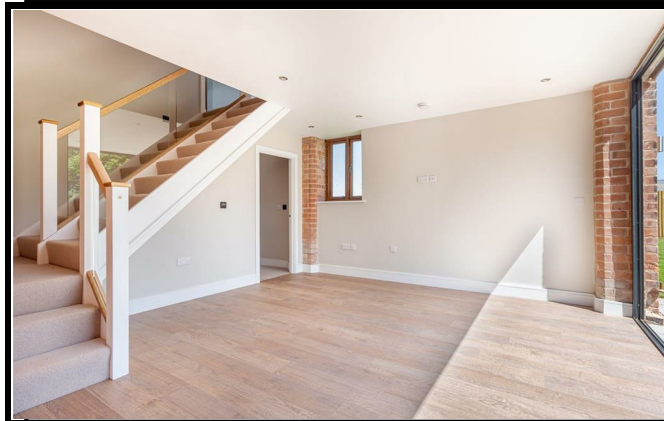


Allan Morris

estate agents



Details Approved

Signed

Print

Date

Norchard Barns, Crossway Green, Stourport-On-Severn

4 Norchard Barn is a converted individually designed barn conversion by Fletcher Homes - a renowned new build developer across the Worcestershire area. Nestled in a small exclusive development within the highly sought after rural hamlet of Norchard, with direct rail links, excellent private and public schools and local amenities.



£2,200 PER CALENDAR MONTH

Allan Morris Worcestershire Limited. Registered in England and Wales. Company Number 7151279
Registered Office: Sidbury House, 32 Sidbury, Worcester, WR1 2HZ

01905 612266

allan-morris.co.uk
worcester@allan-morris.co.uk



01905 612266

allan-morris.co.uk
worcester@allan-morris.co.uk



4, Norchard Barns, Crossway Green, Stourport-On-Severn, DY13 9SN

All measurements are approximate. Accommodation in more detail comprises:



GENERAL INFORMATION

Whilst we endeavour to make our sales particulars fair, accurate and reliable, they are only a general guide to the property. Accordingly, if there is any point which is of particular importance to you please contact the office and we will be pleased to check the position for you, especially if you are travelling some distance to view the property. MEASUREMENTS: Our quoted room sizes are approximate and intended for general guidance, you are particularly advised to verify all the dimensions carefully. TENURE: We understand the property is offered for sale FREEHOLD. FIXTURES AND FITTINGS: All items not specifically mentioned within these details are to be excluded from the sale. SERVICES: Any mention of services/appliances within these details does not imply they are in full and efficient working order. We have not tested these, or any equipment in the property. Allan Morris Worcestershire will not be liable, in negligence or otherwise, for any loss arising from the use of these particulars.

ROUTE TO THE PROPERTY: