



The  Griffin
TONG VILLAGE

The Griffin

TONG VILLAGE

Built in the mid to late 17th century and Grade II listed, The Griffin is a rare kind of home that carries its age with grace. Set in the heart of Tong Village, what was once a pub and social hub is now a warm and welcoming home for moments from woodland walks and well loved community spaces. It feels deeply rooted yet intimately lived in, shaped by care and quiet charm.

The Griffin's history runs far deeper than its Grade II listing. Its architectural connection with nearby Tong Hall is unmistakable, both built from the same distinctive brick. The home's name is drawn from the Tempest family's coat of arms and is thought to date back to a time when the building served as an inn for monks of the Tong Chantry until the early 18th century. Many of the features that define the residence today, from the stone mullion windows to the arched forms echoed throughout, speak softly of this past. Heritage sits alongside modern life with rare ease, bringing beauty, craftsmanship and comfort into the everyday.





"This is where Sunday dinners linger and birthdays feel a little more magical. The room has a way of gathering people together."



A WARM WELCOME

The double fronted red brick exterior is softened by planted beds that add a splash of colour and guide you towards the entrance. Inside, heritage greets you at once. Light filters through the front door and settles on terracotta tiles that lead towards the kitchen and living room. A discreet space to the left keeps coats and boots neatly tucked away.

The dining room is set slightly lower than the hallway which makes it feel defined yet connected. Restored herringbone flooring, rescued from an old school house in Rugby, reveals the home's appreciation for craftsmanship. Stone mullion windows frame soft south facing village views and dark wood beams create a gentle rhythm overhead. The open fireplace anchors the room with its brick arch and stone hearth, offering both presence and warmth.



“The kitchen is simple yet practical. I have always enjoyed cooking here because it works well and feels calm.”

THE EVERYDAY KITCHEN

Beyond the dining room, a brick arch leads into the kitchen where the terracotta flooring continues. The space is bright and rectangular, with white cabinetry and wood countertops bringing a quiet clarity that suits the home's character. The sink sits beneath the mullion window and the integrated dishwasher keeps life simple. A gas hob, integrated oven, microwave space and pantry cupboard provide all the essentials. A small bench beneath the window offers a moment of stillness and a place to admire the arched window at the far end which frames a view through to the living room and staircase.





WHERE EVENINGS SETTLE IN

The living room is reached through an oak half light door that echoes the kitchen's arches. The home's history is felt immediately in the oak panelling and flooring which bring warmth and depth. At its centre, a log burner sits within a Yorkshire stone fireplace and hearth, topped by a metal canopy marked with a small griffin that nods to the residence's historic name and former life.

A run of stone mullion windows, now double glazed, preserves character while drawing sunlight through the room. Oak panelling continues along the walls, concealing under stairs storage and the door leading to the utility and WC. This practical room includes a high level traditional toilet, wash hand basin and generous storage that currently holds a fridge freezer, washing machine and space for a dryer.

"Winter evenings here are my favourite. Fire lit, lights low and the sense of settling into something timeless."





A HOME STEEPED IN CHARACTER

The stairs rise from the living room with soft grey carpet underfoot. Dark wood spindles and a vaulted ceiling of beams reinforce the home's heritage as you climb. Halfway up, a half landing reveals integrated cupboards behind wood panelling and a striking stone arched window with a gentle monastic feel. Light spills softly across the stairs and living room below.

At the top, the galleried landing offers a natural pause before leading to the principal bedroom, second bedroom and family bathroom.





THE PRINCIPAL BEDROOM

The principal bedroom is an expansive and serene space that easily accommodates a super king bed. Wood panelling creates a gentle partition from the landing and a feature fireplace provides a natural focal point. South facing windows open onto green fields where the seasons unfold in a calm and unhurried rhythm. A former window, believed to have been blocked during the window tax era, sits within the wall and may, subject to the necessary consents, allow the room to be reconfigured to create a third bedroom through its reopening and a simple partition.

“Waking up to the fields every morning felt like a gift. It is a room that slows the world a little.”





ROOMS WITH QUIET PRESENCE

Stepping down as you enter, the second double bedroom continues the home's original character with restored wood flooring and exposed beams. A solid oak built in wardrobe sits neatly to the back left and stone mullion windows draw in views of the fields. Another feature fireplace adds continuity and gentle elegance. Plentiful eaves storage provides potential for a walk-in wardrobe or en suite.

The family bathroom includes a compact bath, walk in shower, WC and wash basin. White painted panelling and a vaulted ceiling with exposed beams shape the room into something both architectural and calm. A stained glass window depicting falling autumn leaves casts warm colour across the space.





A VILLAGE WITH STORY AND SPIRIT

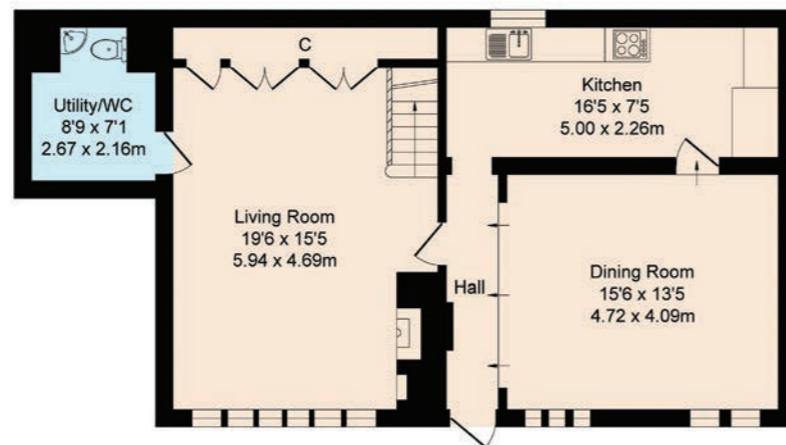
Tong Village is one of those rare places that feels both tucked away and wonderfully connected. Loved for its sense of community, it offers everyday amenities with rural charm. The Greyhound public house, village hall, farm shop, local dairy, award winning ice cream parlour, garden centre and cricket ground all sit within easy reach and add to the rhythm of village life.

The Griffin lies within the Tong Village Conservation Area among historic buildings that define the village's character. St James' Church stands as a gentle landmark while Tong Hall, an impressive 18th century manor house, brings grandeur to the landscape. Despite its peaceful setting, the village is ideal for commuters with Leeds and Bradford easily reached and Junctions 26 and 27 of the M62 only a five minute drive away.

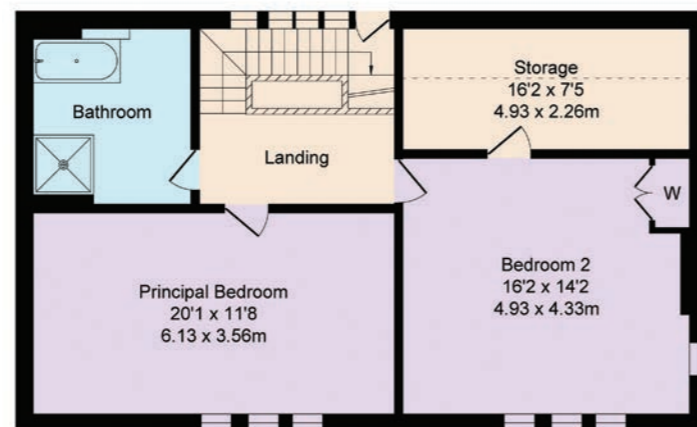




Total Approx. Floor Area 1628 Sq.ft. (151.3 Sq.M.)



Ground Floor
Approx. Floor Area 822 Sq.Ft (76.4 Sq.M.)



First Floor
Approx. Floor Area 806 Sq.Ft (74.9 Sq.M.)

FINER DETAILS

- Grade II listed period home
- 2 large double bedrooms
- 1 bathroom + downstairs WC
- 2 reception rooms
- Spacious sitting room with feature fireplace
- Close to commuter links
- Countryside village living
- Located in the sought after Tong Village
- Steeped in history & period features
- All mains services

ASK THE OWNERS SECTION

WHERE DO YOU GO WHEN YOU NEED...



MILK:
Lane End Farm Shop
(15 min walk)



CHEMIST:
Boots Pharmacy
(8 min drive)



GYM:
MPFIT Gyms
(10 min drive)



WALK:
So many lovely walks straight out of the front door!



TAKEAWAYS:
Lots to choose from that deliver from Pudsey or Drighlington



PLACES TO EAT:
Walton Hall (15 min walk)



PUB:
The Greyhound (Our local in the village) (3 min walk)



POI:
Lots of history in Tong village & the Fulneck Moravian settlement plus a golf course at either side of the valley



PUBLIC TRANSPORT:
Bus: services run regularly into Cleakhton & Bradford Interchange (15 min walk); Train: Leeds, Manchester & London Kings Cross (15 min drive)



LOCAL SCHOOLS:
Southroyd Primary School (6 min drive), Pudsey Grammar School (9 min drive)



The Griffin, 5 Tong Lane, Bradford BD4 0RR

presented by



WHAT3WORDS: [copper.fantastic.likely](https://www.what3words.com/copper.fantastic.likely)

To view The Griffin
Call: 01423 225121
WhatsApp: 07398 748511
Email: hello@mrandsrchild.com