



# THE BRISTOL

LUXURY HOTELS & RESORTS

EMAAR BEACHFRONT

---

EMAAR



# Timeless Elegance Meets Modern Luxury

**The Bristol, Luxury Hotels & Resorts** is an icon of ultra-luxury hospitality, where every detail is a masterpiece of elegance. From stunning architectural designs to personalised, intuitive service, at The Bristol, every experience is tailored to redefine opulence.







EMAAR BEACHFRONT

# A World of Beachfront Bliss





# Refined Living, Inspired by the Waves

Adding to the charm, the serenity and the celestial heights of Emaar Beachfront, The Bristol Luxury Hotels & Resorts is arriving to offer an elevated feel of an opulent, island paradise.

Life's hustle disappears as you embrace the essence of exquisite living – at the pinnacle of an exclusive retreat.



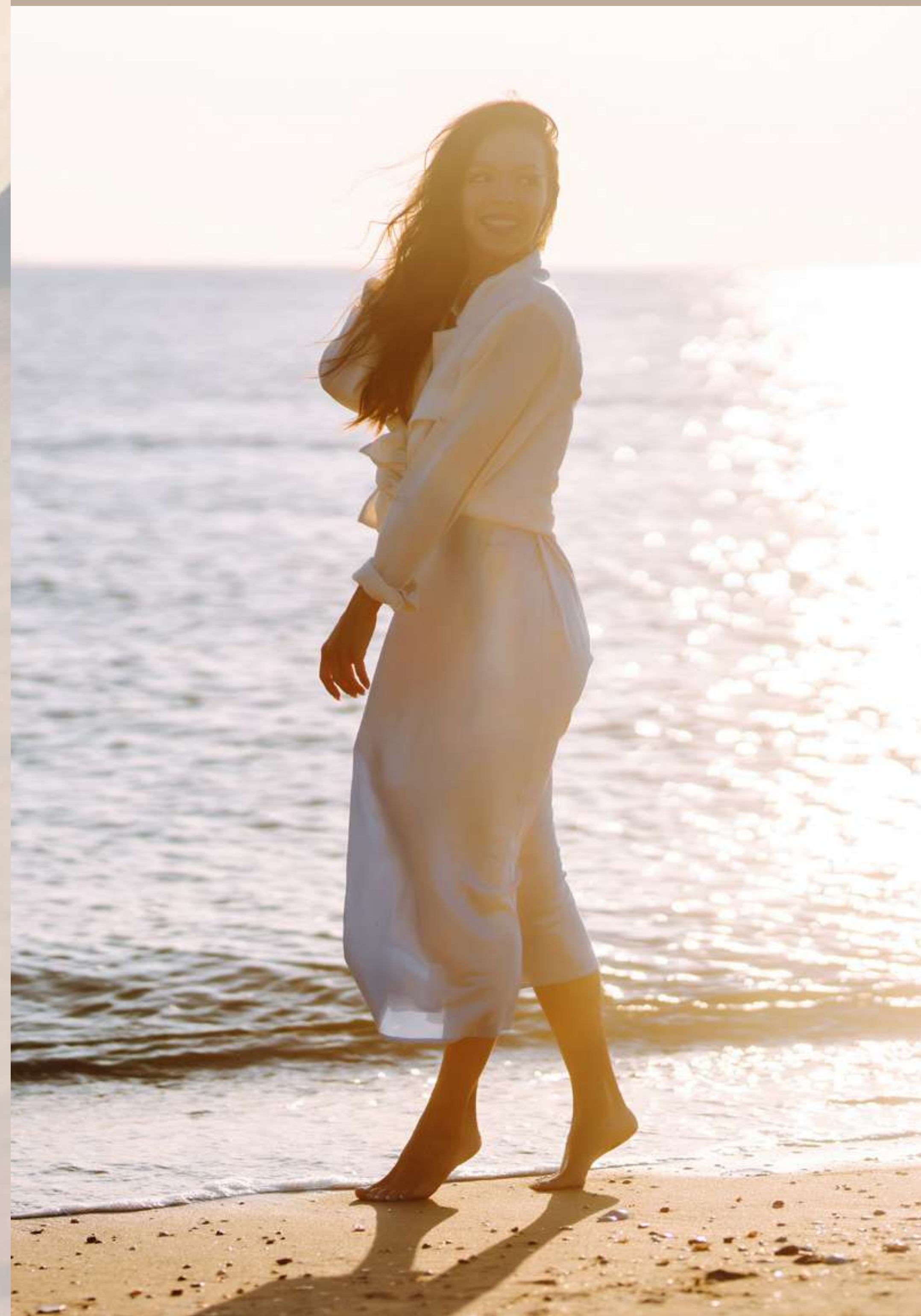
Welcoming  
An Iconic Landmark





# Assured Grandeur & Exclusivity

A motif of timeless luxury, The Bristol Luxury Hotels & Resorts at Emaar Beachfront embraces the tempo of the sea while connected to the rhythm of the city. Neighbouring Dubai's most iconic coastal locations, its breathtaking skyline views sweep across urban landmarks, from Dubai Marina, The Palm Island and, to the luminous ocean beyond.

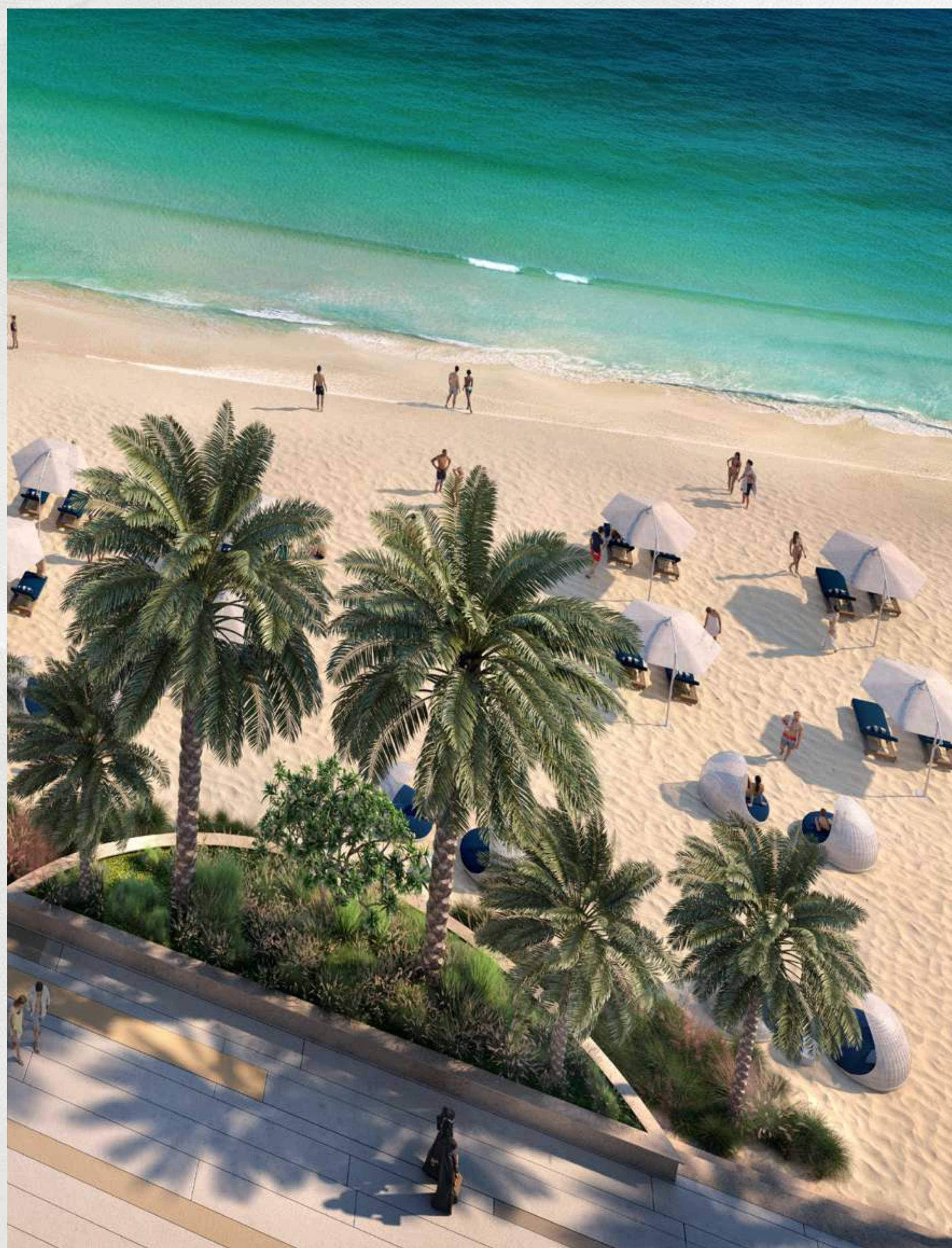




# An Exclusive Beachfront Location







# Your Elite Coastal Haven



1.5 KM of  
Pristine Beach



Panoramic Views  
of the Sea & Marina



Steps Away from  
Marina & Yacht Club



Direct Access to  
Sheikh Zayed Road



Community  
Parks



Nearby Hotels  
& Restaurants



A photograph of a modern, curved balcony with glass railings, overlooking a city at dusk. The balcony is illuminated from within, showing interior furniture and plants. The city below is lit up, with a large body of water in the foreground and a distant skyline. The sky is a mix of orange and blue.

# Canvasses of Breathtaking Views



# A Fusion of Style & Luxury

The Bristol Luxury Hotels & Resorts at Emaar Beachfront reclaims coastal chic with branded apartments, penthouses and a five-star lifestyle hotel. Impeccably devised, immaculately finished and elegantly designed, these expansive homes strike the perfect balance of lavish yet laid-back living.





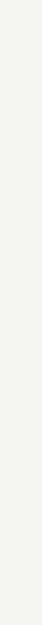


Expansive Living,  
Elevated Style





## A Key to Chic Living



Branded apartments designed for The Bristol seamlessly transition the outdoor rhythm which the masterplan has to offer, into the symphony indoors.

With floor-to-ceiling windows, open-planned layouts and thoughtful allocation of areas which allow the harmonic play between space and natural light, these homes have a place for everything that matters in true style of  
The Bristol Luxury Hotels & Resorts,











Nature Inspired  
Interiors

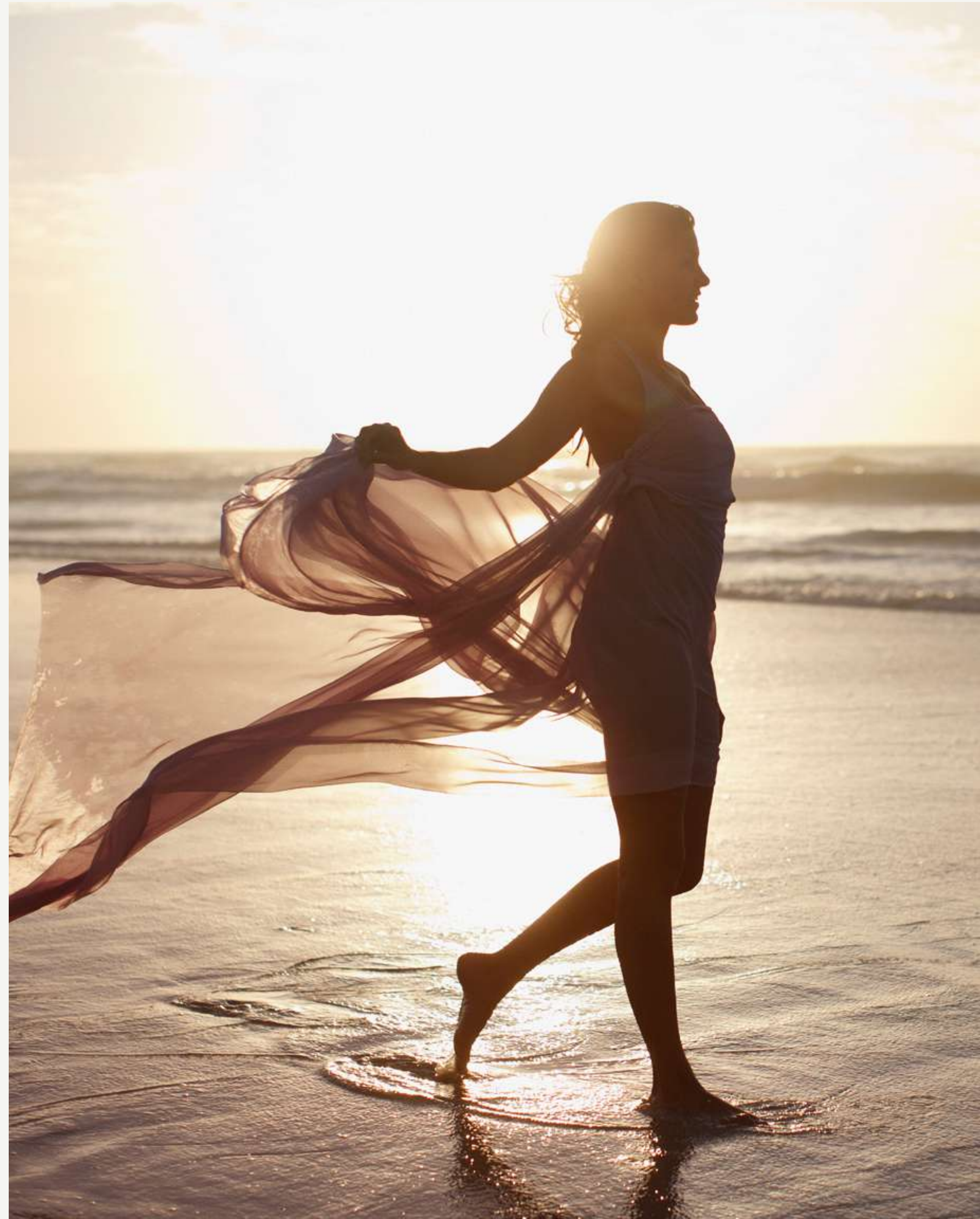






# Access The Glamour

An extravagant beach luxury duets with exceptional marina living. A light stroll can take you to the soft, pristine sands of your private beachfront, or immerse you in ultra-fine dining, exclusive yachting. While a short drive can transport you to the extraordinary global experiences which this iconic city has to offer.





A wide-angle photograph of a sophisticated outdoor dining terrace. The foreground features several tables with modern wooden frames and upholstered chairs, each set with glassware, plates, and a small lamp. The terrace is partially covered by a large, striped awning. In the middle ground, a man and a woman are seated at a table, looking out towards the ocean. The background shows a beautiful beach scene with lounge chairs, umbrellas, and a few people. A person in a white thobe is standing on the right, taking a photo. The sky is clear and blue, and the water is a vibrant turquoise. The overall atmosphere is one of elegance and relaxation.

Experiences That Surpass  
All Expectations









# Comforts That Keep You Coming Back

This unparalleled island lifestyle is complemented by world-class amenities you can experience, whether at the beach, on the pool deck or at a quiet zen garden.

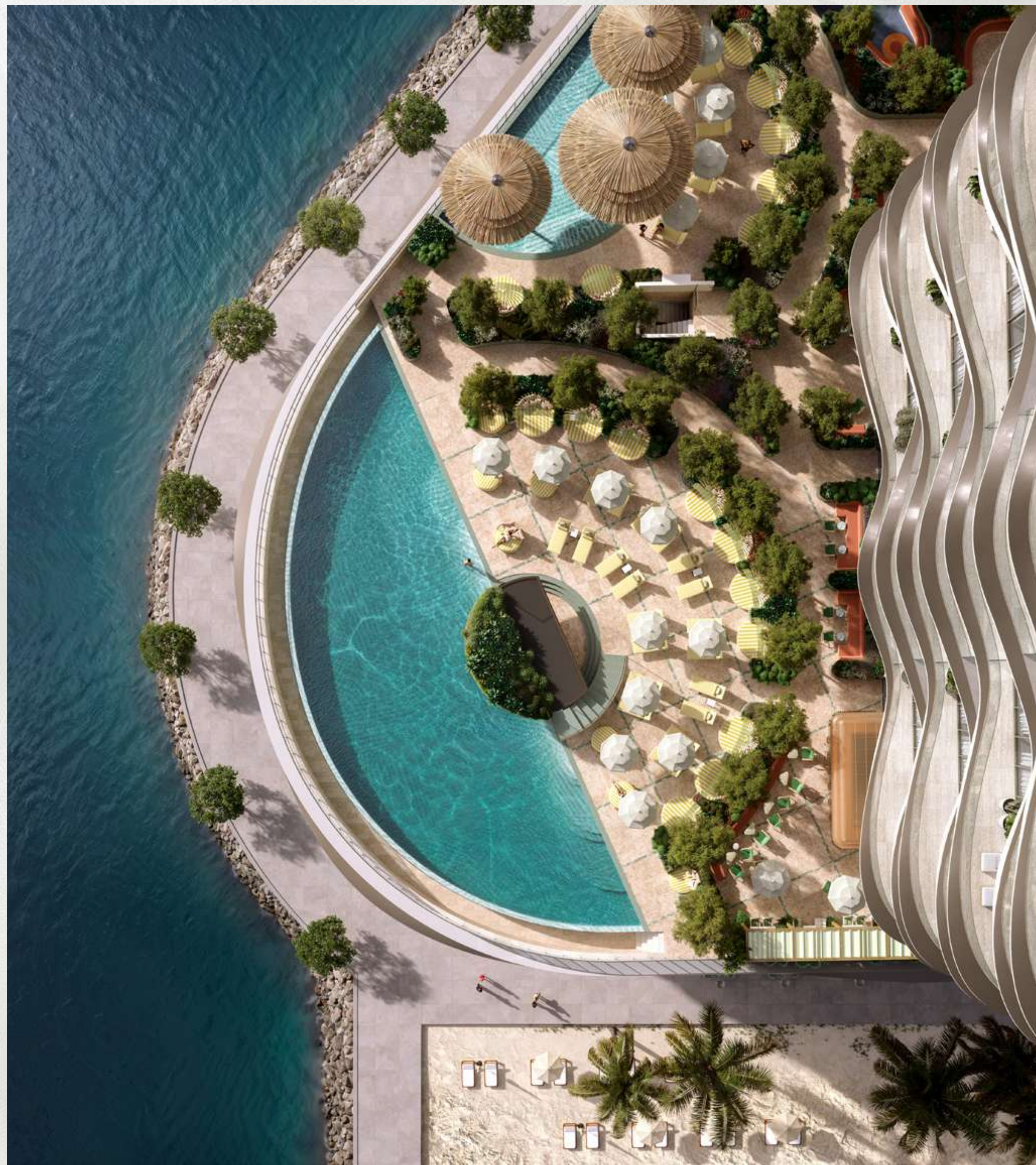
The Bristol at Emaar Beachfront orchestrates your tastes and leisure to perfection, for a life where privilege and pleasure is at your doorstep.











# Relax & Revitalise



The world of experiences at The Bristol Emaar Beachfront is not limited to the obvious comforts. They expand far beyond to bring all the elements of Dubai's iconic lifestyle under one roof making it impossible to leave the grandeur of this place which you will call home.



Infinity Pool  
& Kids' Pools



Kids' Play  
Area



Fully Equipped  
Gym



Signature  
F&B



Spa & Wellness  
Facility









# Global Lifestyle Developer

A leader in the global real estate market, EMAAR has grown over the years to become the largest real estate developer outside of China. You will be investing with one of the best-regarded brands in the world.

71.7Bn AED  
Market Cap - FY 2023

115,000+  
Residential Units Delivered

14.4Bn AED  
Revenue – H1 2024

12+  
Global Market Presence

5.3Bn AED  
Net Profit - H1 2024

42,200+  
Residential Units Currently Under Development

\*As on 30 June 2024





# THE BRISTOL

LUXURY HOTELS & RESORTS

## EMAAR BEACHFRONT

For more information please call 800 36227 (UAE) / +971 4 366 1688 (International)  
or talk to our Property Advisor directly at +971 4888 8844 from 9 AM to 7 PM (GST), Monday to Friday.  
Visit our online sales centre at [emaar.com](https://emaar.com) or any of our Sales Centres across the UAE.

---

### DUBAI

Emaar Sales Centre | Next to Souq Al Bahar, Downtown Dubai  
9:30 AM to 10 PM, Sunday - Friday  
9:30 AM to 7 PM, Saturday

Dubai Hills Estate Sales Pavilion | Umm Suqeim Road  
Dubai Creek Harbour Sales Pavilion | Ras Al Khor  
From 9:30 AM to 7 PM, Sunday - Saturday

### ABU DHABI

Emaar Sales Centre | Al Nahda Tower, Ground Floor,  
4th Street, Corniche, Al Muroor Road  
From 9:30 AM to 7 PM, Sunday - Friday

# EMAAR