



EMPIRE *estates*

CROWNED LIVING AT

ARJAN

DUBAI

EMPIRE

DEVELOPMENTS



EMPIRE *estates*

SKY VILLA DUPLEXES

SIZE: 1636 SQ.FT. TO 3198 SQ.FT.

EMPIRE
DEVELOPMENTS



LAVISH SKY VILLA

SKY VILLA DUPLEXES

All images used are for illustrative purposes only and do not represent the actual size, features, specifications, fittings, and furnishings.
The developer reserves the right to make revisions / alterations at its absolute discretion, without any liability whatsoever.



SKY VILLA DUPLEXES

All images used are for illustrative purposes only and do not represent the actual size, features, specifications, fittings, and furnishings. The developer reserves the right to make revisions / alterations at it's absolute discretion, without any liability whatsoever.

EMPIRE
DEVELOPMENTS



ELEGANT DINING

HAVEN

Your chic and spacious dining room is a haven for creating cherished family memories or savouring intimate dinners. The elegant ambience and ample seating make it perfect for daily family fiestas or romantic evenings, ensuring a delightful dining experience for all occasions.



EMPIRE
DEVELOPMENTS



SKY VILLA DUPLEXES

All images used are for illustrative purposes only and do not represent the actual size, features, specifications, fittings, and furnishings. The developer reserves the right to make revisions / alterations at its absolute discretion, without any liability whatsoever.



SKY VILLA DUPLEXES

All images used are for illustrative purposes only and do not represent the actual size, features, specifications, fittings, and furnishings. The developer reserves the right to make revisions / alterations at it's absolute discretion, without any liability whatsoever.



THE EPICUREAN OASIS

Your culinary masterpiece is your impeccably styled and fully equipped kitchen. Adorned with top-class fittings and fixtures, this space is a haven to showcase culinary prowess with grace and style.



EMPIRE
DEVELOPMENTS



LOFTY LUXE LOUNGE



SKY VILLA DUPLEXES

All images used are for illustrative purposes only and do not represent the actual size, features, specifications, fittings, and furnishings.
The developer reserves the right to make revisions / alterations at it's absolute discretion, without any liability whatsoever.



SKY VILLA DUPLEXES

All images used are for illustrative purposes only and do not represent the actual size, features, specifications, fittings, and furnishings. The developer reserves the right to make revisions / alterations at its absolute discretion, without any liability whatsoever.



THE VERDANT

SKY LOUNGE



Escape to our elevated oasis retreat, where the spacious open-air terrace, seamlessly blends a lush green area with a chic lounge vibe. Immerse yourself in the serenity of nature while enjoying the comfort of a stylish and inviting atmosphere.



SKY VILLA DUPLEXES

EMPIRE

DEVELOPMENTS

All images used are for illustrative purposes only and do not represent the actual size, features, specifications, fittings, and furnishings. The developer reserves the right to make revisions / alterations at it's absolute discretion, without any liability whatsoever.



PRIVATE BLUE AQUATIC

PARADISE

Superbly placed within the confines of your lavish Sky Villa lies an oasis of tranquillity—the private swimming pool. Its elegant design seamlessly blends modern aesthetics with natural elements, creating a captivating retreat where every dip becomes a luxurious escape into serenity.



EMPIRE
DEVELOPMENTS



SKY VILLA DUPLEXES

All images used are for illustrative purposes only and do not represent the actual size, features, specifications, fittings, and furnishings. The developer reserves the right to make revisions / alterations at its absolute discretion, without any liability whatsoever.



UNMATCHED

SERENITY



The master bedroom epitomizes tranquillity and sophistication with a lovely blend of style and grandeur. This room is meticulously designed for optimal comfort, the room seamlessly blends plush furnishings with calming hues, creating a haven for restful sleep and rejuvenation.



SKY VILLA DUPLEXES

EMPIRE
DEVELOPMENTS

All images used are for illustrative purposes only and do not represent the actual size, features, specifications, fittings, and furnishings.
The developer reserves the right to make revisions / alterations at it's absolute discretion, without any liability whatsoever.



GRANDIOSE

BATHROOM



Within your opulent home is a meticulously designed, expansive bathroom that radiates elegance. The continuous integration of a sophisticated walk-in style closet enhances functionality and luxury, creating a haven for indulgence and relaxation.



SKY VILLA DUPLEXES

EMPIRE

DEVELOPMENTS

All images used are for illustrative purposes only and do not represent the actual size, features, specifications, fittings, and furnishings.
The developer reserves the right to make revisions / alterations at it's absolute discretion, without any liability whatsoever.



EMPIRE *estates*

3

BED

LUXURY TRIO

SIZE: 1772 SQ.FT. TO 1784 SQ.FT.

EMPIRE

DEVELOPMENTS



FOR
ABSOLUTE
TRANQUILLITY

The master bedroom of your 3-bedroom luxury apartment epitomizes tranquillity. It is a harmonious blend of huge wall-sized glass windows, soft ambient lighting, and a sophisticated colour scheme, creating an oasis of calm, offering residents a serene retreat from the bustling world outside.



EMPIRE
DEVELOPMENTS



3 BED APARTMENTS

All images used are for illustrative purposes only and do not represent the actual size, features, specifications, fittings, and furnishings. The developer reserves the right to make revisions / alterations at its absolute discretion, without any liability whatsoever.



3 BED APARTMENTS

All images used are for illustrative purposes only and do not represent the actual size, features, specifications, fittings, and furnishings.
The developer reserves the right to make revisions / alterations at it's absolute discretion, without any liability whatsoever.



ATTRACTIVE AND FASHIONABLE LOUNGE

Step into the stunning lounge of your three-bed haven, where lavish design and modern elegance converge. With extravagant furnishings and a breathtaking ambience, this space redefines the art of sophisticated living.



EMPIRE
DEVELOPMENTS





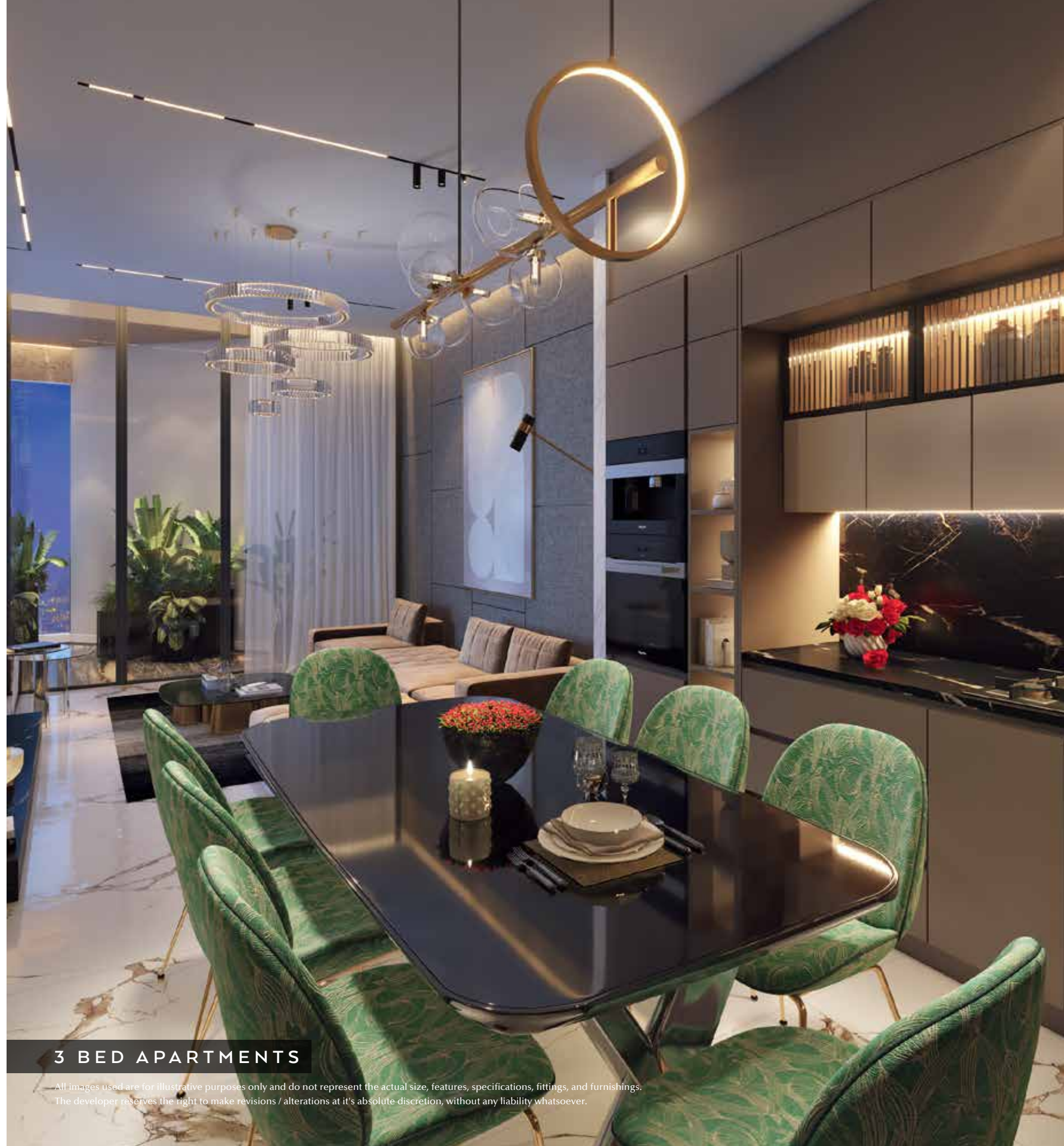
DINE IN

STYLE

In the centre of your luxurious 3-bed apartment, the spacious open dining area between the lounge and the kitchen exudes elegance. Bathed in natural light, it is comfortable and stylish, creating an inviting sanctuary for unforgettable dining experiences.



EMPIRE
DEVELOPMENTS



3 BED APARTMENTS

All images used are for illustrative purposes only and do not represent the actual size, features, specifications, fittings, and furnishings. The developer reserves the right to make revisions / alterations at its absolute discretion, without any liability whatsoever.



MIRROR MARVEL

LAVISH BATH

Step into the epitome of indulgence within the voguish bathroom of your 3-bed apartment. Dual mirrors and sinks grace the space, complemented by top-of-the-line equipment for unparalleled style and functionality.



EMPIRE
DEVELOPMENTS



3 BED APARTMENTS

All images used are for illustrative purposes only and do not represent the actual size, features, specifications, fittings, and furnishings. The developer reserves the right to make revisions / alterations at its absolute discretion, without any liability whatsoever.



SPECTACULAR CITYSCAPE

3 BED APARTMENTS

All images used are for illustrative purposes only and do not represent the actual size, features, specifications, fittings, and furnishings.
The developer reserves the right to make revisions / alterations at it's absolute discretion, without any liability whatsoever.



EMPIRE *estates*

2

BED

DYNAMIC DUO

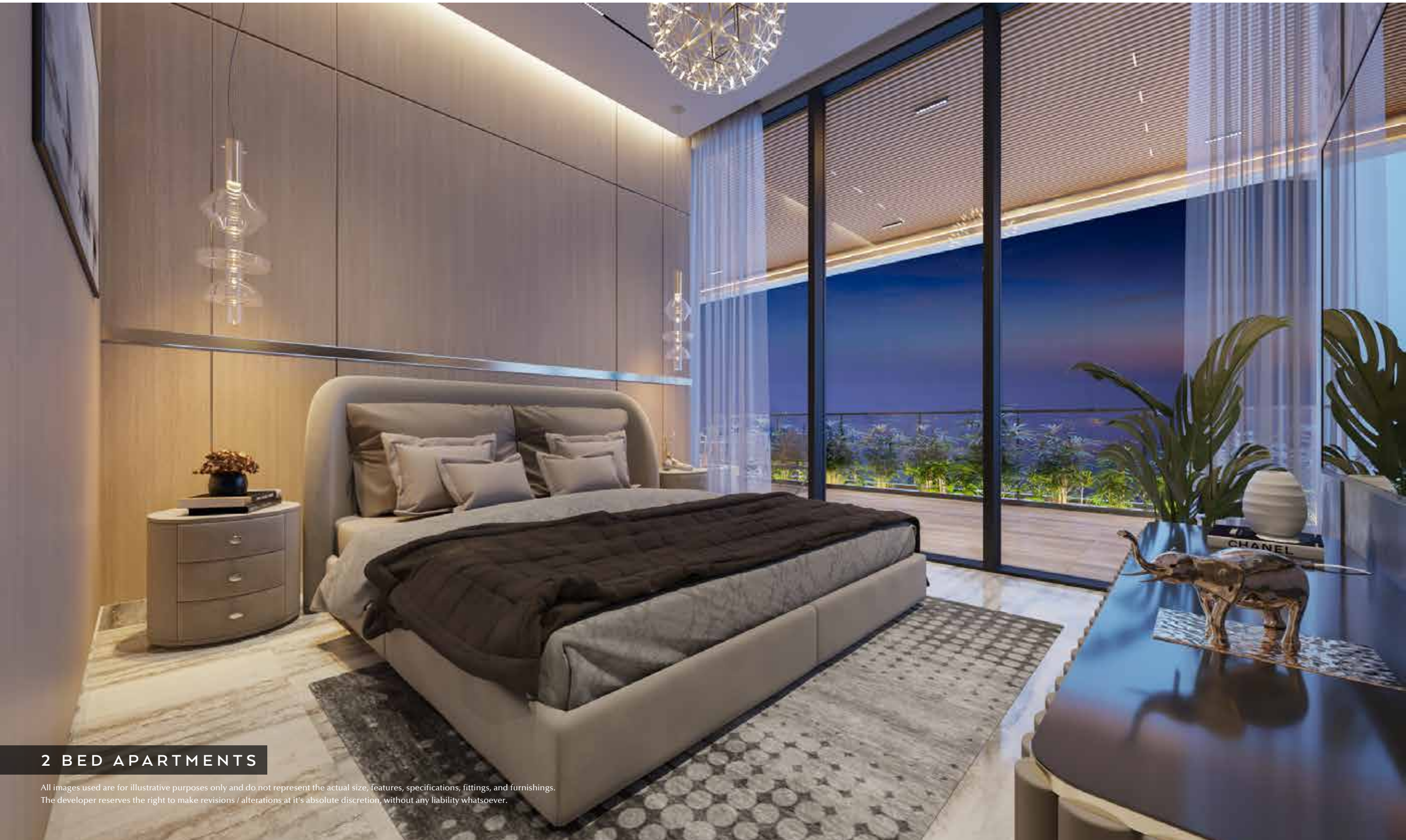
SIZE: 1015 SQ.FT. TO 1758 SQ.FT.

EMPIRE

DEVELOPMENTS

ELEGANCE

EMBRACED



2 BED APARTMENTS

All images used are for illustrative purposes only and do not represent the actual size, features, specifications, fittings, and furnishings.
The developer reserves the right to make revisions / alterations at it's absolute discretion, without any liability whatsoever.

BEAUTIFUL LOUNGE FOR YOUR
FAMILY



2 BED APARTMENTS

All images used are for illustrative purposes only and do not represent the actual size, features, specifications, fittings, and furnishings.
The developer reserves the right to make revisions / alterations at it's absolute discretion, without any liability whatsoever.



REFRESH, REJUVENATE TO PERFECTION



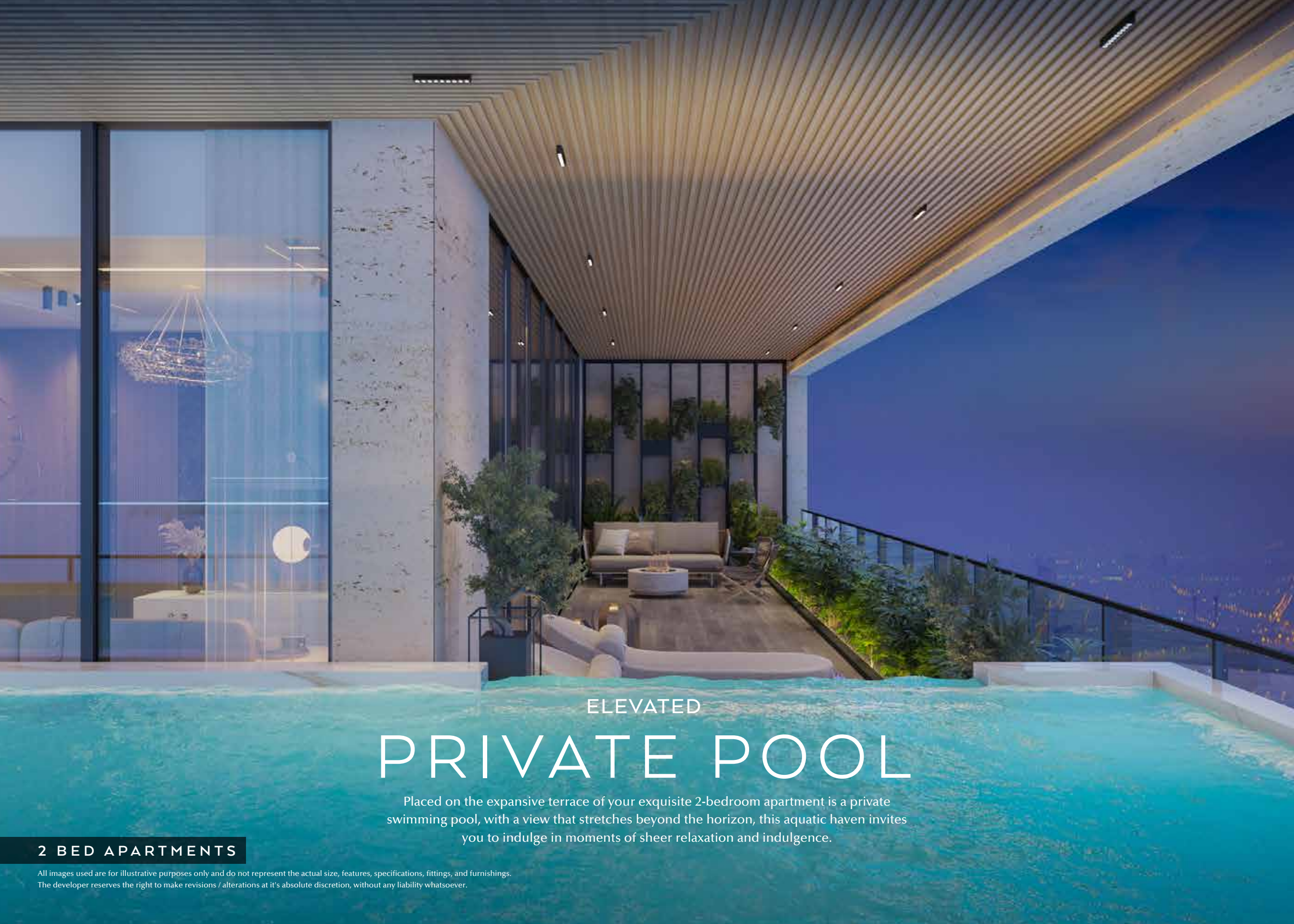
Completing the master bedroom is a spacious tiled, bathroom where you can refresh yourself with a hot shower. The bathroom is stylishly designed with optimum use of space, equipped with the most modern bathroom fittings and branded faucets, the ultra-modern bathroom gives you the perfect feel of freshness.



2 BED APARTMENTS

All images used are for illustrative purposes only and do not represent the actual size, features, specifications, fittings, and furnishings.
The developer reserves the right to make revisions / alterations at it's absolute discretion, without any liability whatsoever.

EMPIRE
DEVELOPMENTS



ELEVATED PRIVATE POOL

Placed on the expansive terrace of your exquisite 2-bedroom apartment is a private swimming pool, with a view that stretches beyond the horizon, this aquatic haven invites you to indulge in moments of sheer relaxation and indulgence.

2 BED APARTMENTS

All images used are for illustrative purposes only and do not represent the actual size, features, specifications, fittings, and furnishings.
The developer reserves the right to make revisions / alterations at it's absolute discretion, without any liability whatsoever.



HIGH ALTITUDE RETREAT



2 BED APARTMENTS

All images used are for illustrative purposes only and do not represent the actual size, features, specifications, fittings, and furnishings.
The developer reserves the right to make revisions / alterations at it's absolute discretion, without any liability whatsoever.



EMPIRE *estates*

1

BED

SOLO LIVING

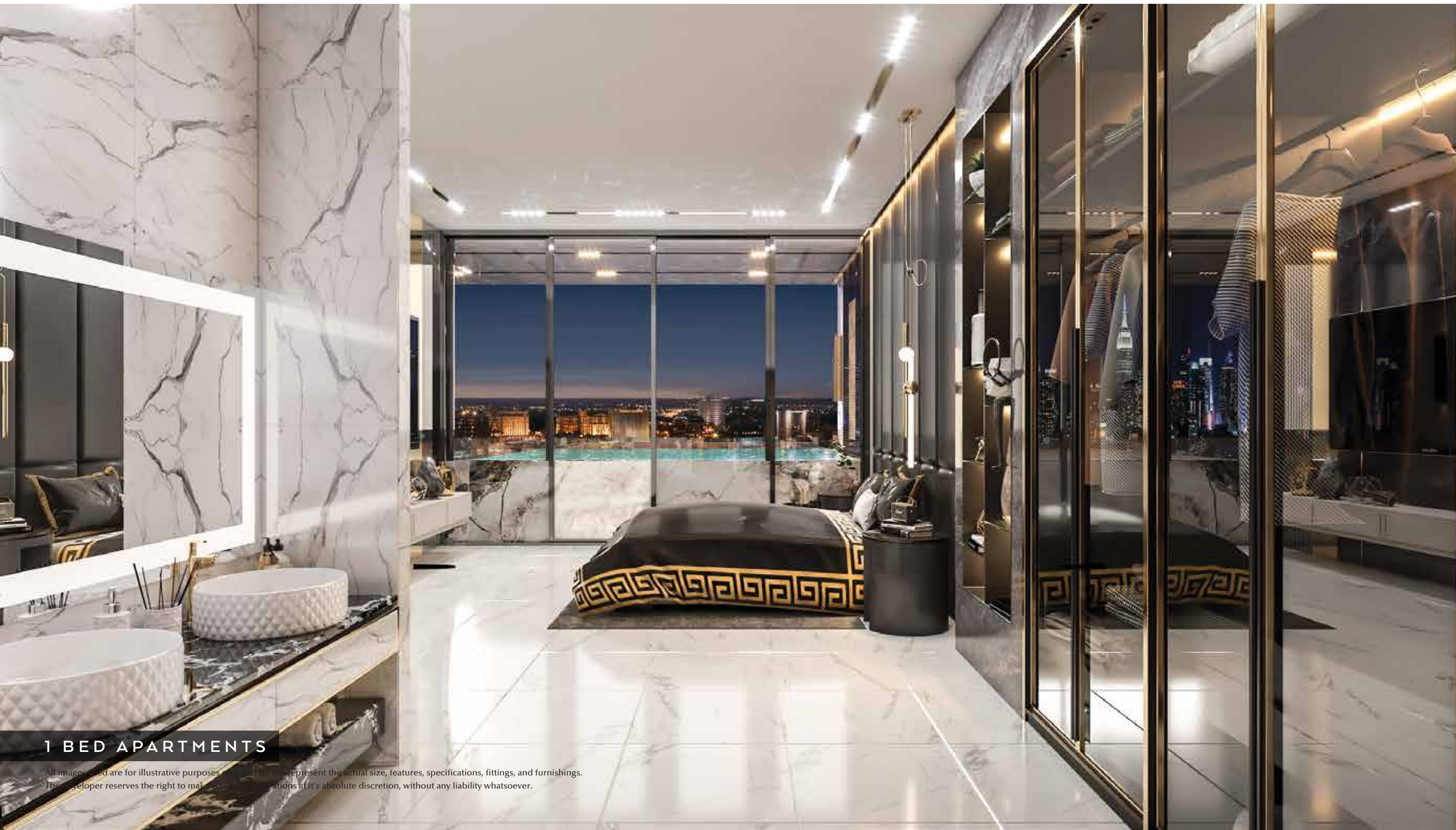
SIZE: 843 SQ.FT. TO 982 SQ.FT.

EMPIRE

DEVELOPMENTS



COMPACT SLEEPING HAVEN



1 BED APARTMENTS

All images used are for illustrative purposes only and do not represent the actual size, features, specifications, fittings, and furnishings. The developer reserves the right to make certain modifications at its absolute discretion, without any liability whatsoever.



1 BED APARTMENTS

All images used are for illustrative purposes only and do not represent the actual size, features, specifications, fittings, and furnishings. The developer reserves the right to make revisions / alterations at it's absolute discretion, without any liability whatsoever.



1 BED APARTMENTS

All images used are for illustrative purposes only and do not represent the actual size, features, specifications, fittings, and furnishings. The developer reserves the right to make revisions / alterations at it's absolute discretion, without any liability whatsoever.



GET REFRESHED IN
STYLE

Your apartment has a stylish bathroom adorned with top-notch fittings offering a rejuvenating escape.



EMPIRE
DEVELOPMENTS



1 BED APARTMENTS

All images used are for illustrative purposes only and do not represent the actual size, features, specifications, fittings, and furnishings.
The developer reserves the right to make revisions / alterations at it's absolute discretion, without any liability whatsoever.



DINE IN STYLE



In the open dining area of your one-bed apartment, the contemporary design of the open dining space invites you to dine in sophistication, creating a cosy yet elegant atmosphere that enhances your overall living experience.



1 BED APARTMENTS

All images used are for illustrative purposes only and do not represent the actual size, features, specifications, fittings, and furnishings.
The developer reserves the right to make revisions / alterations at it's absolute discretion, without any liability whatsoever.

EMPIRE
DEVELOPMENTS



STYLISHNESS

AT ITS BEST



1 BED APARTMENTS

All images used are for illustrative purposes only and do not represent the actual size, features, specifications, fittings, and furnishings.
The developer reserves the right to make revisions / alterations at it's absolute discretion, without any liability whatsoever.



SECLUDED

AQUATIC BLISS



1 BED APARTMENTS

All images used are for illustrative purposes only and do not represent the actual size, features, specifications, fittings, and furnishings.
The developer reserves the right to make revisions / alterations at it's absolute discretion, without any liability whatsoever.



BALUSTRADE

LIKE NO OTHER

1 BED APARTMENTS

All images used are for illustrative purposes only and do not represent the actual size, features, specifications, fittings, and furnishings.
The developer reserves the right to make revisions / alterations at it's absolute discretion, without any liability whatsoever.



EMPIRE *estates*



STUDIO



LIVING SOLUTIONS



SIZE: 371 SQ.FT. TO 461 SQ.FT.



EMPIRE

DEVELOPMENTS



COZY STUDIO



SLEEPSCAPE



STUDIO

All images used are for illustrative purposes only and do not represent the actual size, features, specifications, fittings, and furnishings.
The developer reserves the right to make revisions / alterations at its absolute discretion, without any liability whatsoever.



SIMPLICITY WITH STYLE



STUDIO

All images used are for illustrative purposes only and do not represent the actual size, features, specifications, fittings, and furnishings.
The developer reserves the right to make revisions / alterations at it's absolute discretion, without any liability whatsoever.



SHINE YOUR

CULINARY SKILLS



Embrace the charm of a compact dream oasis within the confines of a studio apartment. This kitchen area combines functionality with aesthetics.



STUDIO

All images used are for illustrative purposes only and do not represent the actual size, features, specifications, fittings, and furnishings. The developer reserves the right to make revisions / alterations at it's absolute discretion, without any liability whatsoever.

EMPIRE

DEVELOPMENTS



PERFECT DAILY

REJUVENATION

Your bathroom redefines elegance and luxury. With its sleek design, modern fixtures, and impeccable attention to detail, this stylish space offers a sanctuary for relaxation and rejuvenation.



EMPIRE
DEVELOPMENTS



STUDIO

All images used are for illustrative purposes only and do not represent the actual size, features, specifications, fittings, and furnishings. The developer reserves the right to make revisions / alterations at its absolute discretion, without any liability whatsoever.



EXPERIENCE

ULTIMATE VISTAS



STUDIO

All images used are for illustrative purposes only and do not represent the actual size, features, specifications, fittings, and furnishings. The developer reserves the right to make revisions / alterations at its absolute discretion, without any liability whatsoever.



EMPIRE *estates*
ARJAN

All images used are for illustrative purposes only and do not represent the actual size, features, specifications, fittings, and furnishings. The developer reserves the right to make revisions / alterations at its absolute discretion, without any liability whatsoever.

EMPIRE
DEVELOPMENTS



Contact Us

+971 4 248 3400, +971 55 162 3236

info@tanamiproperties.ae

For More Info...

www.tanamiproperties.com/Projects/Empire-Estates-at-Arjan



3405, Marina Plaza, Al Marsa Street, Dubai Marina, UAE