

Fletcher & Company

74 Dalebrook Road, Burton-On-Trent, DE15 0AE

£285,000

Freehold



- Spacious Accommodation
- Well-Appointed Throughout
- Split-Level Entrance Hall
- Two Bedrooms, LeanTo/Conservatory & Well-Appointed Bathroom to Lower Ground Floor
- Lounge/Diner & Recently Fitted Kitchen to Ground Floor
- Two Further Bedrooms to First Floor
- Good Sized Rear Garden with Views
- Driveway & Garage





Summary

This is a deceptively spacious, split-level, four bedroom, detached residence occupying popular residential location in Burton-upon-Trent.

This is a well-positioned, deceptively spacious, split-level, detached residence. The accommodation is essentially set over three floors with the lower ground floor comprising entrance hall, two bedroom, lean to/conservatory and well-appointed bathroom. The ground floor comprises a spacious lounge/dining room with stylish fitted kitchen. The first floor comprises a small landing and two further bedrooms (both with impressive views).

The property occupies a good-sized plot with lawned fore-garden and adjacent driveway leading to a detached garage. To the rear is a patio area, lower level lawn and borders.

F&C

The Location

The property's location gives easy access into Burton-upon-Trent which offers a complete range of services. Within close proximity there are pleasant recreational areas and river sidewalks and easy access to open countryside. There are excellent pre and infant schools nearby.

Accommodation

Ground Floor

Porch

6'4" x 2'7" (1.95 x 0.81)

A panelled and glazed entrance door provides access to porch with further double glazed door to entrance hall.

Split-Level Entrance Hall

12'10" x 5'11" x 4'3" x 3'7" (3.92 x 1.81 x 1.30 x 1.11)

A split-level hallway with staircase to first floor, further staircase to lower ground floor, central heating radiator and understairs storage cupboard.

Spacious Lounge/Dining Room

17'4" x 11'10" (5.29 x 3.62)

With central heating radiator, staircase to first floor and large double glazed window to front.



Refitted Kitchen

9'5" x 7'9" (2.89 x 2.38)

With U-shaped wood effect preparation services with tiled surround, inset sink unit with mixer tap, stylish fitted base cupboards and draws, complementary wall mounted cupboards, inset four plate gas hob with built-in oven, integrated fridge freezer and dishwasher, appliance space suitable for washing machine, recessed ceiling spotlighting and double glazed window to side.



First Floor

Bedroom Three

12'9" x 10'3" (3.90 x 3.13)

With central heating radiator, double glazed window to rear with fabulous views in the distance and loft hatch providing useful storage.



Bedroom Four

9'2" x 8'8" (2.81 x 2.66)

With central heating radiator and double glazed window to rear with impressive views.



Lower Ground Floor

Bedroom One

12'0" x 11'11" (3.68 x 3.64)

With central heating radiator and double glazed French doors with matching sidelights to lean to/conservatory.



Lean To/Conservatory

8'9" x 5'10" (2.68 x 1.79)

A timber construction with views over the garden.



Bedroom Two

9'5" x 8'7" (2.88 x 2.62)

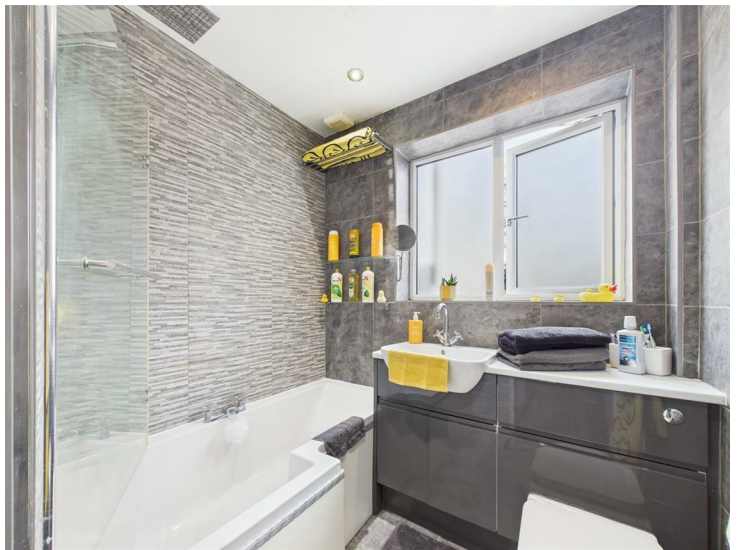
With central heating radiator and double glazed window to rear.



Well-Appointed Bathroom

6'5" x 5'5" (1.98 x 1.67)

Fully tiled with a white suite comprising low flush WC, vanity unit with wash handbasin and cupboards beneath, bath with shower over, chrome towel radiator, recessed ceiling spotlighting and double glazed window to side.

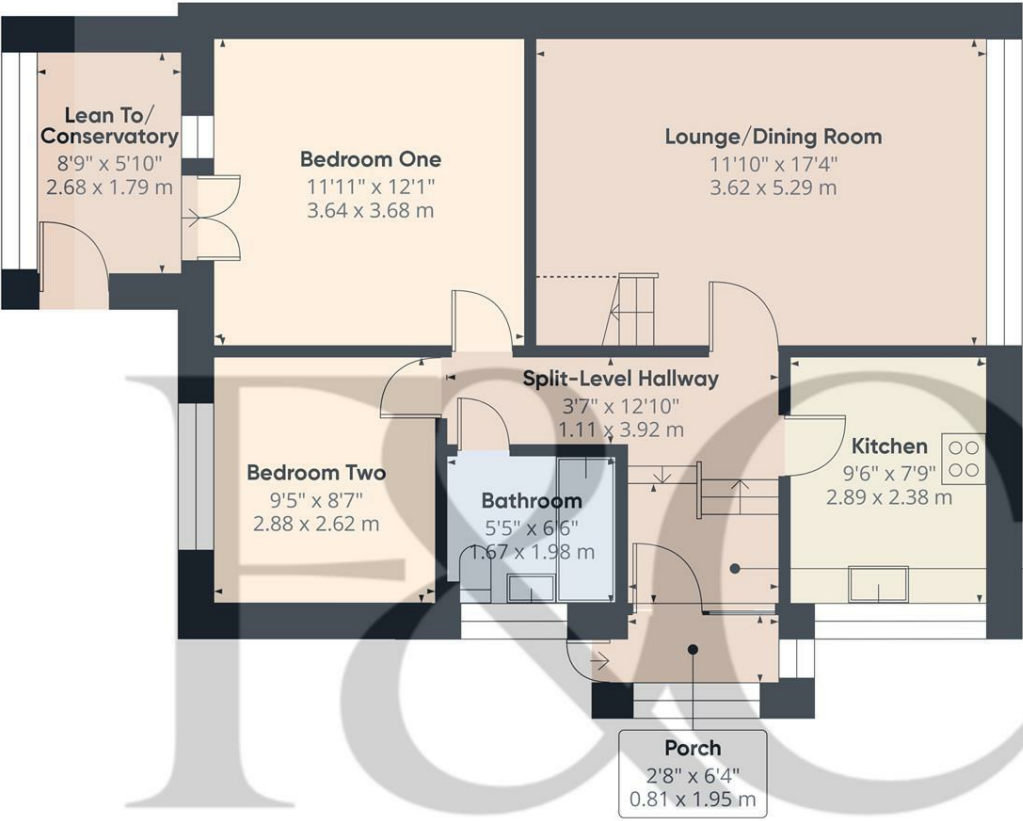


Outside

Immediately to the rear of the property is a paved patio/seating area, lawn and herbaceous borders containing plants and shrubs. Offers a good degree of privacy and pleasant outlook in the distance. To the front of the property is a gently sloping lawn with beach hedge, driveway providing off-road parking and access to a detached garage.



Council Tax Band C



Floor 0

Approximate total area⁽¹⁾
699.65 ft²
65 m²

Reduced headroom
11.28 ft²
1.05 m²

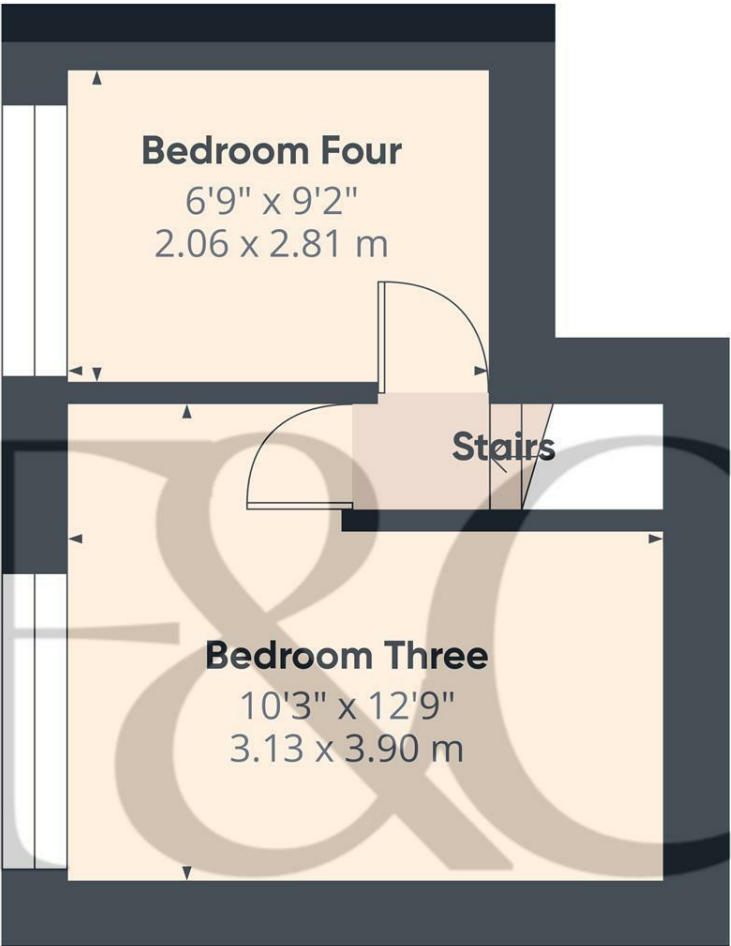
(1) Excluding balconies and terraces

Reduced headroom
..... Below 5 ft/1.5 m

While every attempt has been made to ensure accuracy, all measurements are approximate, not to scale. This floor plan is for illustrative purposes only.

Calculations were based on RICS IPMS 3C standard. Please note that calculations were adjusted by a third party and therefore may not comply with RICS IPMS 3C.

GIRAFFE360



Floor 1

Approximate total area⁽¹⁾
185.14 ft²
17.2 m²

(1) Excluding balconies and terraces

While every attempt has been made to ensure accuracy, all measurements are approximate, not to scale. This floor plan is for illustrative purposes only.

Calculations were based on RICS IPMS 3C standard. Please note that calculations were adjusted by a third party and therefore may not comply with RICS IPMS 3C.

GIRAFFE360



Duffield Office

Duffield House
Town Street
Duffield
Derbyshire
DE56 4GD

01332 843390

duffield@fletcherandcompany.co.uk

Derby Office

15 Melbourne Court
Millennium Way
Pride Park
Derby
DE24 8LZ

01332 300558

derby@fletcherandcompany.co.uk

Willington Office

3 The Boardwalk
Mercia Marina
Findern Lane
Willington
Derbyshire
DE65 6DW

01283 241500

willington@fletcherandcompany.co.uk

74 Dalebrook Road
Burton-On-Trent
DE15 0AE

Council Tax Band: C

Tenure: Freehold



Energy Efficiency Rating

| | Current | Potential |
|---|----------------------------|-----------|
| Very energy efficient - lower running costs | | |
| (92 plus) A | | |
| (81-91) B | | |
| (69-80) C | | 70 |
| (55-68) D | 54 | |
| (39-54) E | | |
| (21-38) F | | |
| (1-20) G | | |
| Not energy efficient - higher running costs | | |
| England & Wales | EU Directive 2002/91/EC | |