



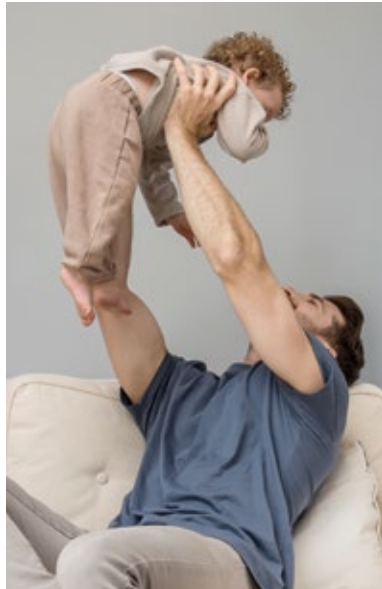
**Edgelaw View  
Edinburgh**

**millerhomes**

*the place to be®*

- 04 Living in Edinburgh
- 08 Welcome Home
- 10 Plot Information
- 12 Floorplans
- 26 The Miller Difference
- 30 Useful Contacts
- 32 Contact Us

A new home. The start of a whole new chapter for you and your family. And for us, the part of our job where bricks and mortar becomes a place filled with activity and dreams and fun and love. We put a huge amount of care into the houses we build, but the story's not finished until we match them up with the right people. So, once you've chosen a Miller home, we'll do everything we can to make the rest of the process easy, even enjoyable. From the moment you make your decision until you've settled happily in, we'll be there to help.





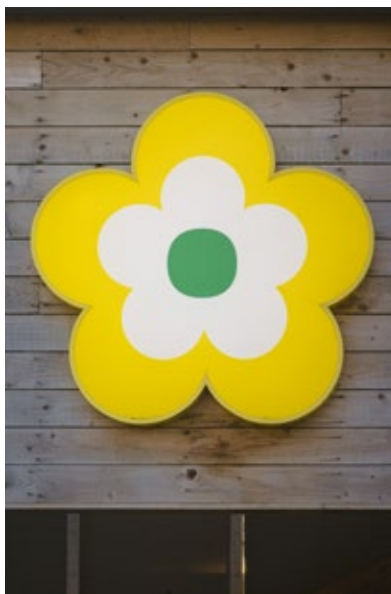
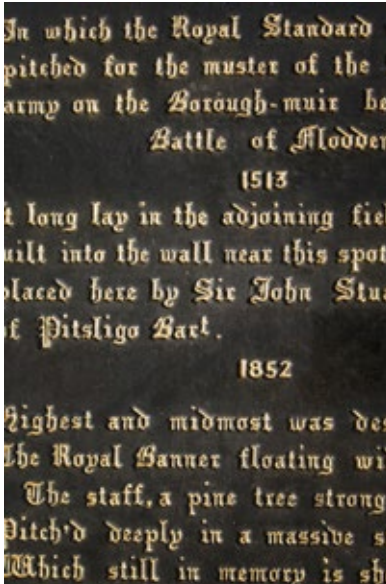
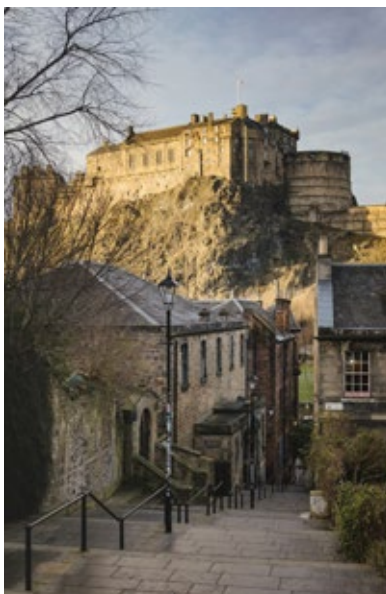
Quality of life is about the details of everyday living. From the little things, like knowing the nearest place to pick up a pint of milk, to more important matters like finding the right school or having a health centre nearby, you need to know that the community you're moving to will support you and your family, as well as being a pleasant place to live. So here's some useful information about the area around Edgelaw View.





Less than five miles from the city centre, Edgelaw View is just half a mile from the City of Edinburgh Bypass, offering fast access to the airport, the central belt and the Queensferry Crossing. Glasgow is less than an hour's drive away. To the east, the A1 presents a gateway to the East Lothian coast, Berwick-upon-Tweed, Newcastle and London. Local buses, including night and express services, stop a few yards from Edgelaw View, providing direct links to the city centre, Edinburgh Zoo and the Gyle Shopping Centre to the west, and Lasswade and Bonnyrigg to the south.

Shops at Gracemount, 20 minutes' walk away, include convenience stores, branches of Tesco Express and Scotmid, a pharmacy, a post office, hairdressers, food takeaways and a café. Edgelaw View is also within five minutes drive, or a pleasant half-hour walk passing through a local nature reserve, of Straiton Retail Park. Comprising more than 25 outlets, Straiton includes M&S and Lidl supermarkets as well as high street homeware, fashion and sports brands. Next to the retail park there are branches of Ikea, Asda and Costco. Dobbies Garden Centre, a popular shopping destination, is just two miles away.





Welcome home

Within a few minutes drive of the City of Edinburgh Bypass, this inviting selection of superb new build homes combines easy access to the world-class attractions and amenities of the capital with fast travel throughout the central belt and further afield. Presenting a choice of two, three, four and five bedrooms, these modern, energy efficient new properties for sale offer peaceful surroundings, wide horizons and outstanding strategic convenience. Welcome to Edgelaw View...

The artist's impressions (computer-generated graphics) have been prepared for illustrative purposes and are indicative only. They do not form part of any contract, or constitute a representation or warranty. External appearance may be subject to variation upon completion of the project.





# Plot Information

- Apartments**
- Carlton DA**   
See Page 12
- Fulton**   
See Page 14
- Hazelwood**   
See Page 16
- Leyton**   
See Page 18
- Maplewood**   
See Page 20
- Greenwood**   
See Page 22
- Lockwood**   
See Page 24
- Affordable Housing**

- Sub-Station S/S
- Visitor Parking V
- Bin Collection Point BCP
- Bike Store B/S
- Plant Room P/R
- Electric Vehicle Charging EV
- Retaining Wall - - - -
- Sustainable Urban Drainage System SUDS



The artist's impressions (computer-generated graphics) have been prepared for illustrative purposes and are indicative only. They do not form part of any contract, or constitute a representation or warranty. External appearance may be subject to variation upon completion of the project. Please note that the site plan is not drawn to scale.



# Carlton DA

**Overview**

The impact of natural, welcoming light created by the triple-windowed, dual aspect lounge is further enhanced by the dual aspect kitchen with its french doors adding a focal point to the dining area. The principal bedroom, with its en-suite facilities, presents a private retreat with a dash of luxury.

**Ground Floor**

**Lounge**  
3.05m x 5.39m  
10'0" x 17'10"

**Kitchen/Dining**  
2.24m x 5.39m  
7'4" x 17'10"

**Laundry**  
2.16m x 1.57m  
7'1" x 5'2"

**WC**  
1.10m x 2.04m  
3'8" x 6'9"

**First Floor**

**Principal Bedroom**  
3.08m x 3.18m  
10'1" x 10'5"

**En-Suite**  
1.96m x 1.69m  
6'5" x 5'7"

**Bedroom 2**  
2.46m x 2.89m  
8'1" x 9'6"

**Bedroom 3**  
2.46m x 2.43m  
8'1" x 8'0"

**Bathroom**  
1.87m x 2.11m  
6'2" x 6'11"

**Floor Space**

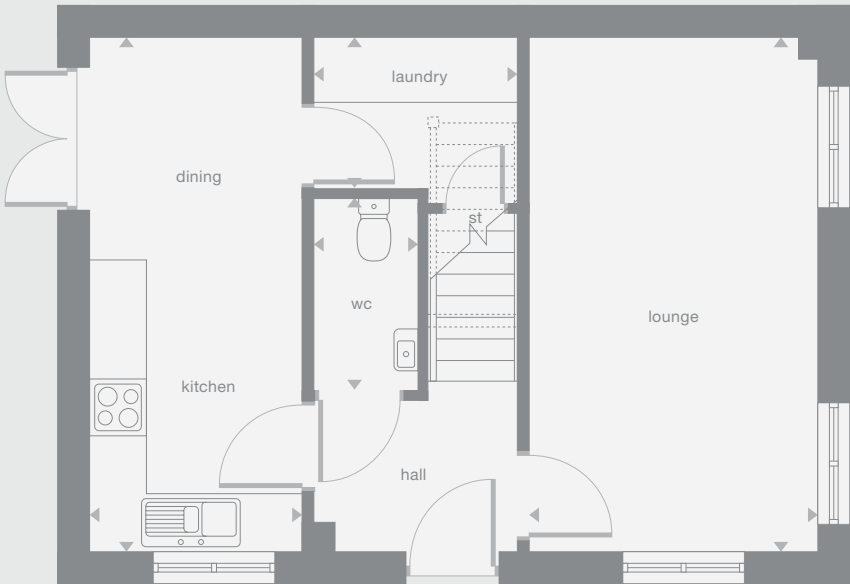
897 sq ft

b Boiler

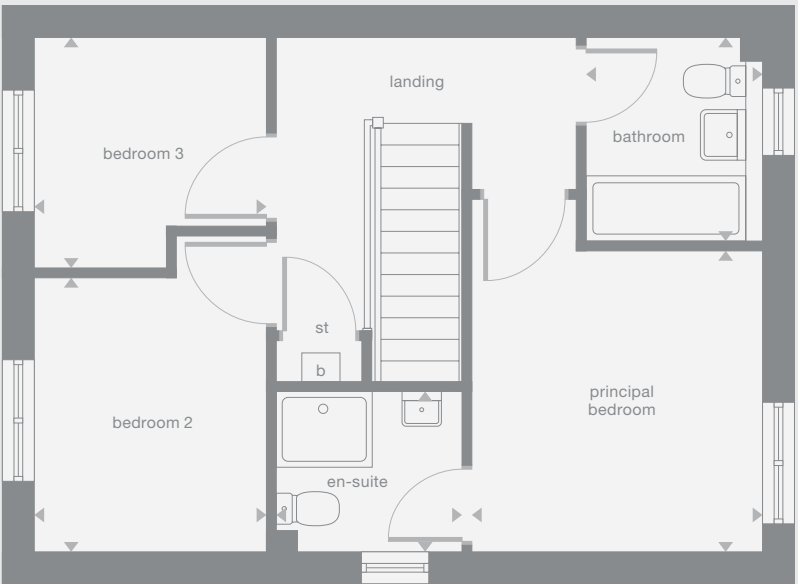
Plots may be a mirror image of the floor plans. Please see Development Sales Manager for details



Ground Floor



First Floor



Photography/CGI represents typical Miller Homes' interiors and exteriors. Please note elevational treatments may vary. All plans in this brochure are not drawn to scale and are for illustrative purposes only. Consequently, they do not form part of any contract. Room layouts are provisional and may be subject to alteration. Please refer to the 'Important Notice' section at the back of this brochure for more information.



# Fulton

**Overview**

The lounge opens, through a separate lobby, into a beautifully designed kitchen and dining room where french doors keep the room light and airy, and make outdoor meals a tempting option. One of the three bedrooms features an en-suite shower, and there is a useful storage cupboard on the landing.

**Ground Floor**

**Lounge**  
3.98m x 3.87m  
13'1" x 12'8"

**Kitchen/Dining**  
5.05m x 2.99m  
16'7" x 9'10"

**WC**  
1.88m x 1.17m  
6'2" x 3'10"

**First Floor**

**Principal Bedroom**  
2.88m x 3.59m  
9'6" x 11'10"

**En-Suite**  
2.29m x 1.42m  
7'6" x 4'8"

**Bedroom 2**  
2.92m x 2.92m  
9'7" x 9'7"

**Bedroom 3**  
2.26m x 2.43m  
7'5" x 8'0"

**Bathroom**  
2.10m x 1.70m  
6'11" x 5'7"

**Floor Space**

900 sq ft

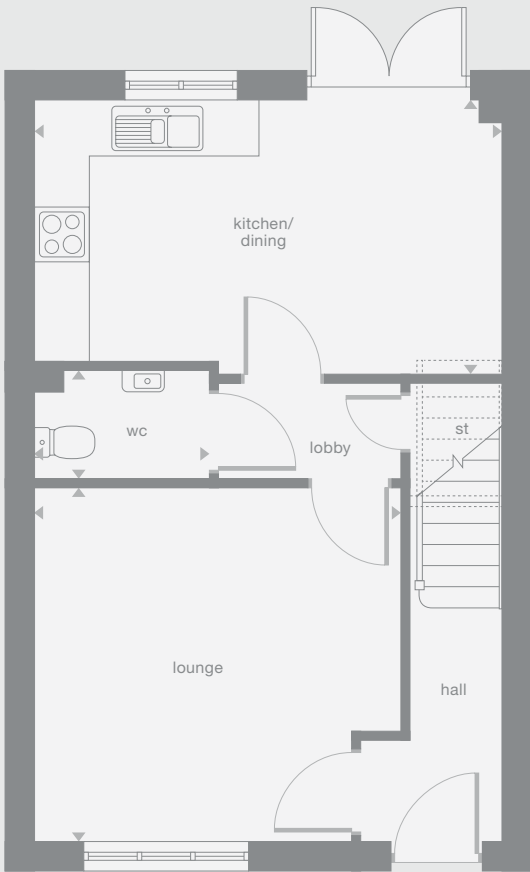
† Window only applicable to some plots. Please speak to our Development Sales Manager for clarification.

b Boiler

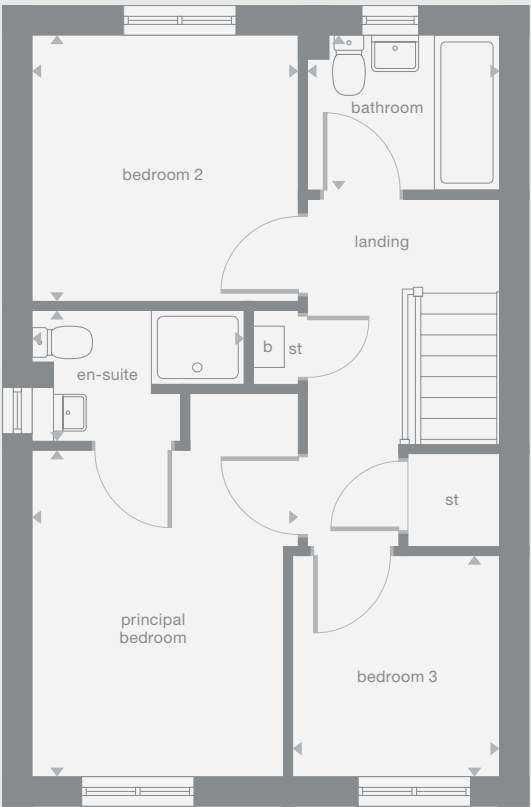
Plots may be a mirror image of the floor plans. Please see Development Sales Manager for details



Ground Floor



First Floor



Photography/CGI represents typical Miller Homes' interiors and exteriors. Please note elevational treatments may vary. All plans in this brochure are not drawn to scale and are for illustrative purposes only. Consequently, they do not form part of any contract. Room layouts are provisional and may be subject to alteration. Please refer to the 'Important Notice' section at the back of this brochure for more information.



# Hazelwood

**Overview**

The lounge opens on to a light-filled family kitchen, a beautifully designed space with feature french doors adding extra appeal to the dining area. With a separate laundry, a useful cupboard in the fourth bedroom and an en-suite principal bedroom, this is a practical, attractive home.

**Ground Floor**

- Lounge**  
3.31m x 4.92m  
10'11" x 16'2"
- Kitchen/Dining**  
5.39m x 3.18m  
17'9" x 10'6"
- Laundry**  
2.06m x 1.95m  
6'9" x 6'5"
- WC**  
2.06m x 1.08m  
6'9" x 3'7"

**First Floor**

- Principal Bedroom**  
4.38m x 2.89m  
14'5" x 9'6"
- En-Suite**  
2.06m x 2.54m  
6'9" x 8'4"
- Bedroom 2**  
3.73m x 2.60m  
12'3" x 8'7"
- Bedroom 3**  
3.73m x 2.60m  
12'3" x 8'7"
- Bedroom 4**  
3.05m x 2.64m  
10'0" x 8'8"
- Bathroom**  
1.92m x 2.22m  
6'4" x 7'4"

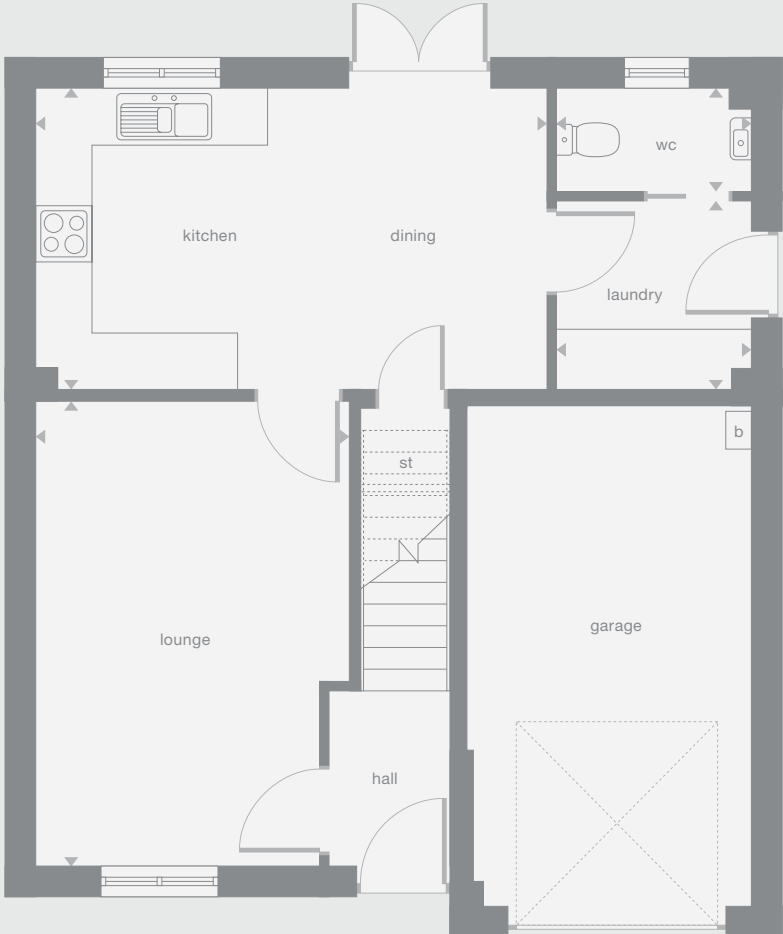
**Floor Space**

1,150 sq ft

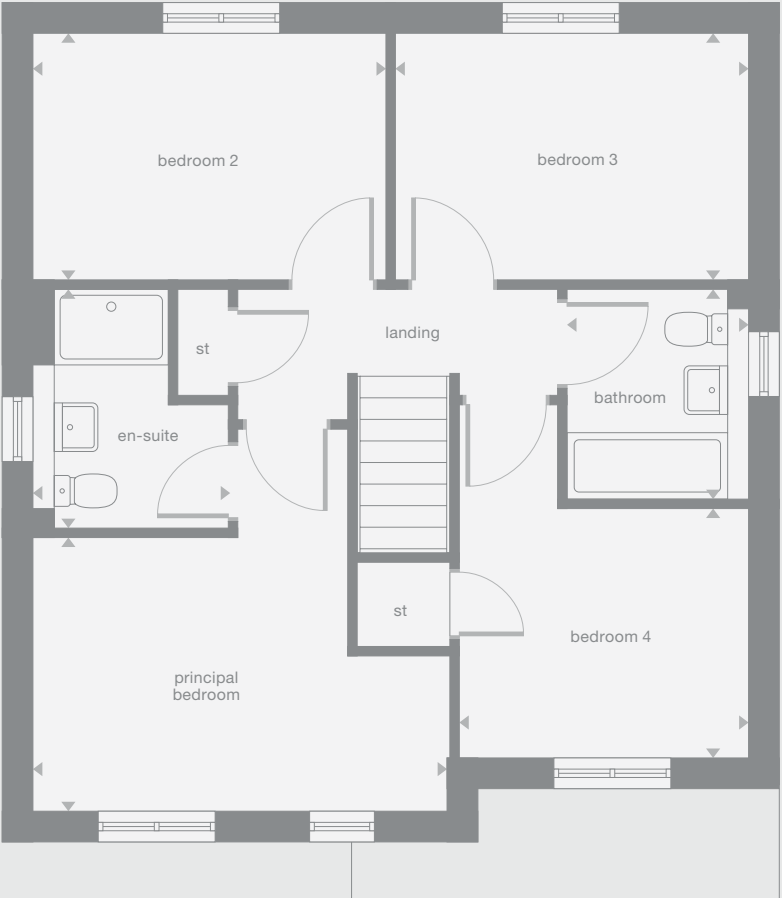
b Boiler  
Plots may be a mirror image of the floor plans. Please see Development Sales Manager for details



Ground Floor



First Floor



Photography/CGI represents typical Miller Homes' interiors and exteriors. Please note elevational treatments may vary. All plans in this brochure are not drawn to scale and are for illustrative purposes only. Consequently, they do not form part of any contract. Room layouts are provisional and may be subject to alteration. Please refer to the 'Important Notice' section at the back of this brochure for more information.



# Leyton

## Overview

The stylishly ergonomic walkthrough kitchen and the bright dining room, opening out to the garden, makes innovative use of space to create an inspiring setting for family evenings, as well as an ideal backdrop to relaxed entertaining. The lounge shares the first floor with the en-suite principal bedroom.

## Ground Floor

**Kitchen**  
3.01m x 3.07m  
9'11" x 10'1"

**Family/Dining**  
4.11m x 3.66m  
13'6" x 12'0"

**WC**  
1.70m x 2.01m  
5'7" x 6'7"

## First Floor

**Lounge**  
4.11m x 2.88m  
13'6" x 9'6"

**Principal Bedroom**  
4.12m x 3.12m  
13'6" x 10'3"

**En-Suite**  
1.38m x 1.71m  
4'6" x 5'8"

## Second Floor

**Bedroom 2**  
4.12m x 3.14m  
13'6" x 10'4"

**Bedroom 3**  
4.15m x 2.91m  
13'8" x 9'7"

**Bathroom**  
1.53m x 2.70m  
5'0" x 8'10"

## Floor Space

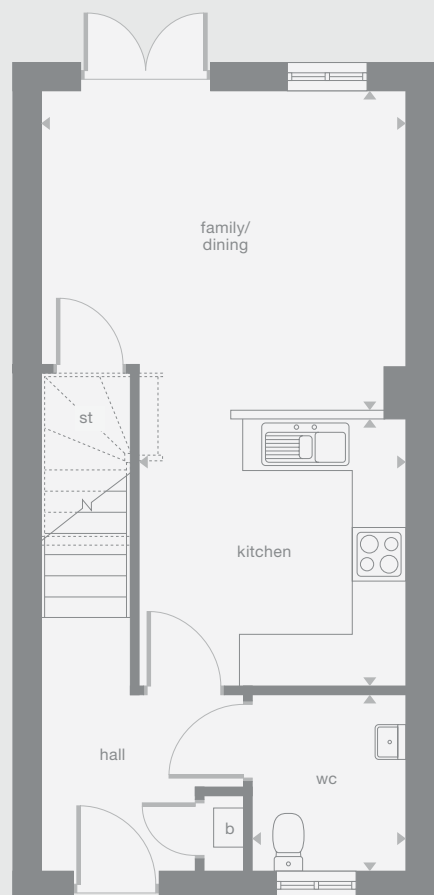
1,202 sq ft

b Boiler

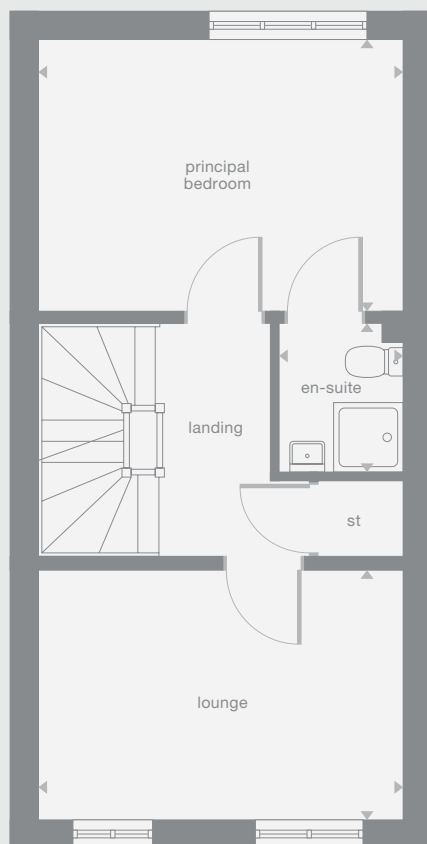
Plots may be a mirror image of the floor plans. Please see Development Sales Manager for details



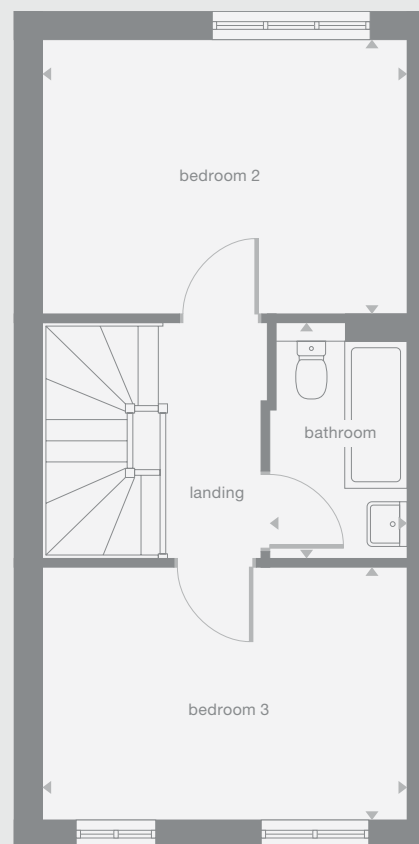
Ground Floor



First Floor



Second Floor



Photography/CGI represents typical Miller Homes' interiors and exteriors. Please note elevational treatments may vary. All plans in this brochure are not drawn to scale and are for illustrative purposes only. Consequently, they do not form part of any contract. Room layouts are provisional and may be subject to alteration. Please refer to the 'Important Notice' section at the back of this brochure for more information.



# Maplewood

## Overview

With twin windows and central french doors, the kitchen and dining room maximises the benefits of the garden to present an adaptable, comfortable setting for family life. The lounge features a stylish bay window, and the delightful principal bedroom includes an en-suite shower and a sumptuous dressing area.

## Ground Floor

**Lounge**  
3.00m x 4.72m  
9'10" x 15'6"

**Family/Dining/Kitchen**  
8.14m x 2.80m  
26'9" x 9'2"

**Laundry**  
1.77m x 1.28m  
5'10" x 4'3"

**WC**  
1.46m x 1.77m  
4'10" x 5'10"

## First Floor

**Principal Bedroom**  
5.01m x 2.80m  
16'6" x 9'2"

**En-Suite**  
2.63m x 1.23m  
8'8" x 4'0"

**Dressing**  
2.63m x 1.38m  
8'8" x 4'7"

**Bedroom 2**  
3.02m x 4.01m  
9'11" x 13'2"

**Bedroom 3**  
2.43m x 4.22m  
8'0" x 13'10"

**Bedroom 4**  
3.06m x 3.00m  
10'1" x 9'10"

**Bathroom**  
2.44m x 3.00m  
8'0" x 9'10"

## Floor Space

1,297 sq ft

b Boiler

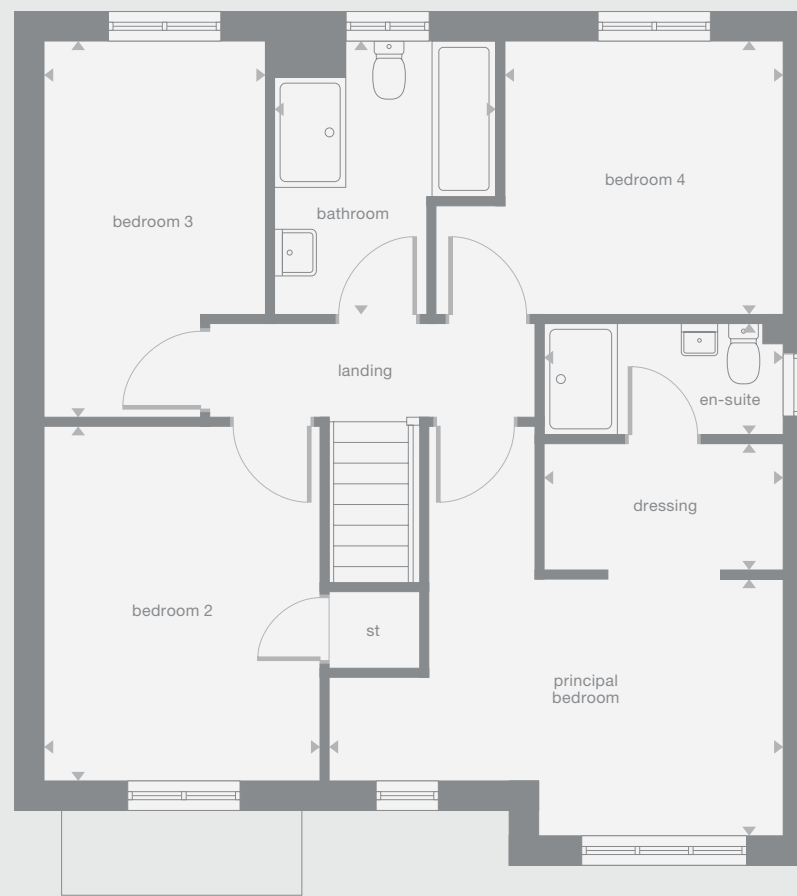
Plots may be a mirror image of the floor plans. Please see Development Sales Manager for details



## Ground Floor



## First Floor



Photography/CGI represents typical Miller Homes' interiors and exteriors. Please note elevational treatments may vary. All plans in this brochure are not drawn to scale and are for illustrative purposes only. Consequently, they do not form part of any contract. Room layouts are provisional and may be subject to alteration. Please refer to the 'Important Notice' section at the back of this brochure for more information.



# Greenwood

## Overview

French doors set into a feature window add a premium touch to the light, airy family kitchen and dining room, a superb setting for family life that shares the ground floor with a more formal bay-windowed lounge. A gallery landing leads to four bedrooms, one of them en-suite with a walk-through dressing area.

## Ground Floor

**Lounge**  
3.57m x 5.24m  
11'9" x 17'2"

**Kitchen/Dining/Family**  
4.97m x 5.80m  
16'4" x 19'0"

**Laundry**  
3.01m x 1.27m  
9'11" x 4'2"

**WC**  
2.16m x 1.12m  
7'1" x 3'8"

## First Floor

**Principal Bedroom**  
2.94m x 3.98m  
9'8" x 13'1"

**En-Suite**  
2.51m x 1.48m  
8'3" x 4'11"

**Dressing**  
2.51m x 1.33m  
8'3" x 4'4"

**Bedroom 2**  
3.57m x 3.79m  
11'9" x 12'6"

**Bedroom 3**  
2.56m x 4.04m  
8'5" x 13'3"

**Bedroom 4**  
2.80m x 2.92m  
9'2" x 9'7"

**Bathroom**  
2.56m x 2.22m  
8'5" x 7'3"

## Floor Space

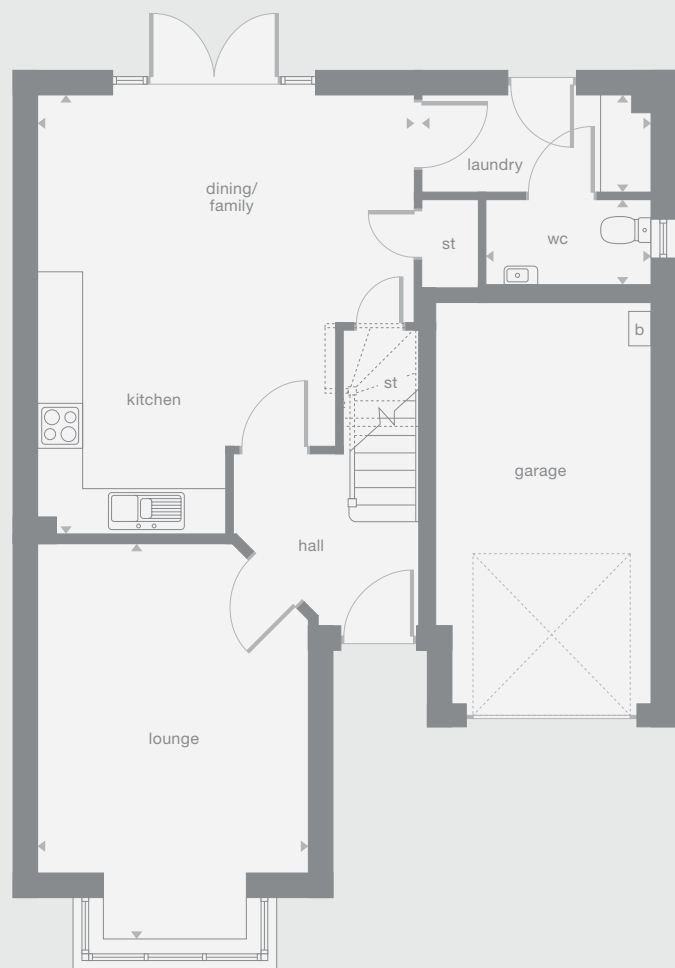
1,342 sq ft

b Boiler

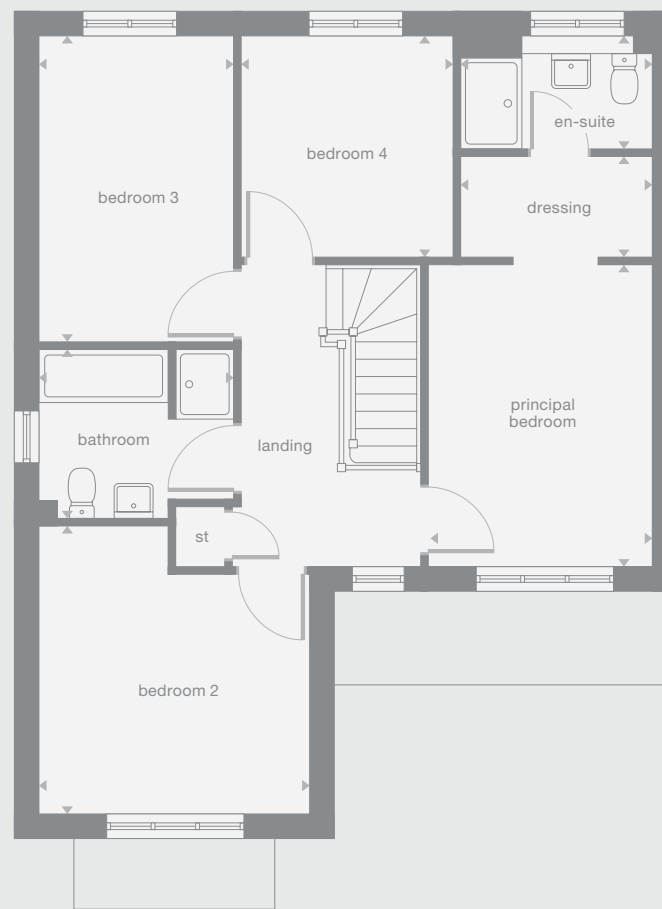
Plots may be a mirror image of the floor plans. Please see Development Sales Manager for details



## Ground Floor



## First Floor



Photography/CGI represents typical Miller Homes' interiors and exteriors. Please note elevational treatments may vary. All plans in this brochure are not drawn to scale and are for illustrative purposes only. Consequently, they do not form part of any contract. Room layouts are provisional and may be subject to alteration. Please refer to the 'Important Notice' section at the back of this brochure for more information.

# Lockwood

## Overview

The elegantly proportioned exterior reflects the immense prestige of this exceptional family home. From the lounge's bay window to the feature staircase with half landing, from the french doors of the dining room to the en-suite showers in two of the four bedrooms, comfort is combined with visual appeal.

## Ground Floor

**Lounge**  
3.63m x 5.85m  
11'11" x 19'3"

**Kitchen/Dining/Family**  
6.20m x 4.22m  
20'4" x 13'10"

**Laundry**  
1.81m x 2.73m  
6'0" x 9'0"

**WC**  
1.81m x 1.38m  
6'0" x 4'7"

## First Floor

**Principal bedroom**  
3.46m x 4.01m  
11'4" x 13'2"

**En-Suite 1**  
1.98m x 1.67m  
6'6" x 5'6"

**Bedroom 2**  
3.49m x 3.17m  
11'5" x 10'5"

**En-Suite 2**  
2.33m x 1.91m  
7'8" x 6'3"

**Bedroom 3**  
2.47m x 3.17m  
8'1" x 10'5"

**Bedroom 4**  
2.47m x 2.93m  
8'2" x 9'8"

**Bathroom**  
1.95m x 3.17m  
6'5" x 10'5"

## Floor Space

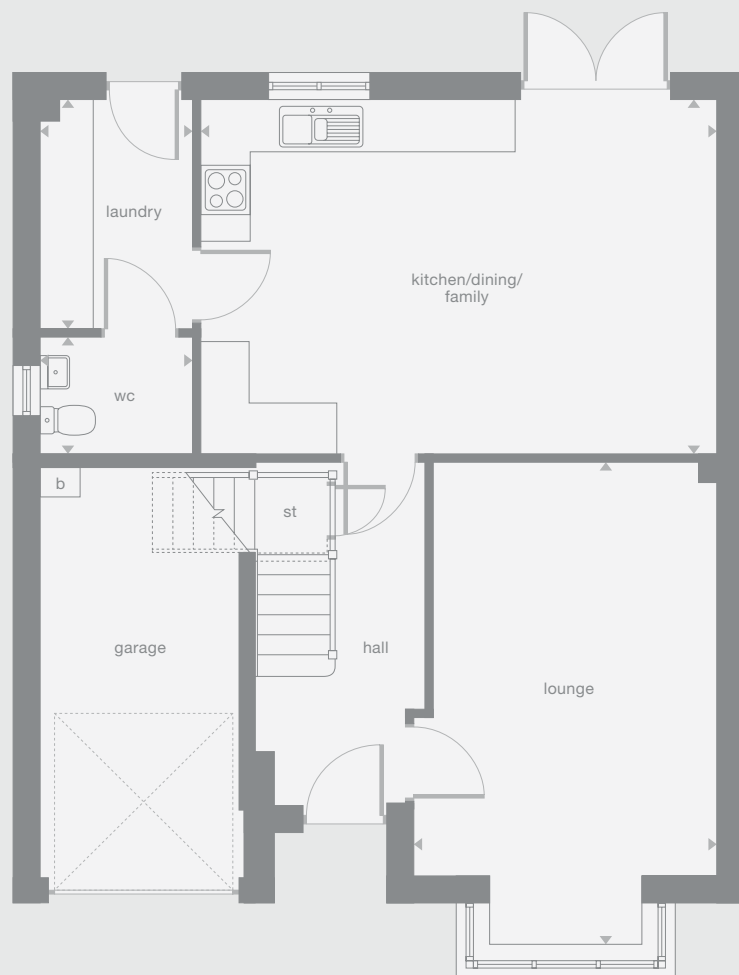
1,446 sq ft

b Boiler

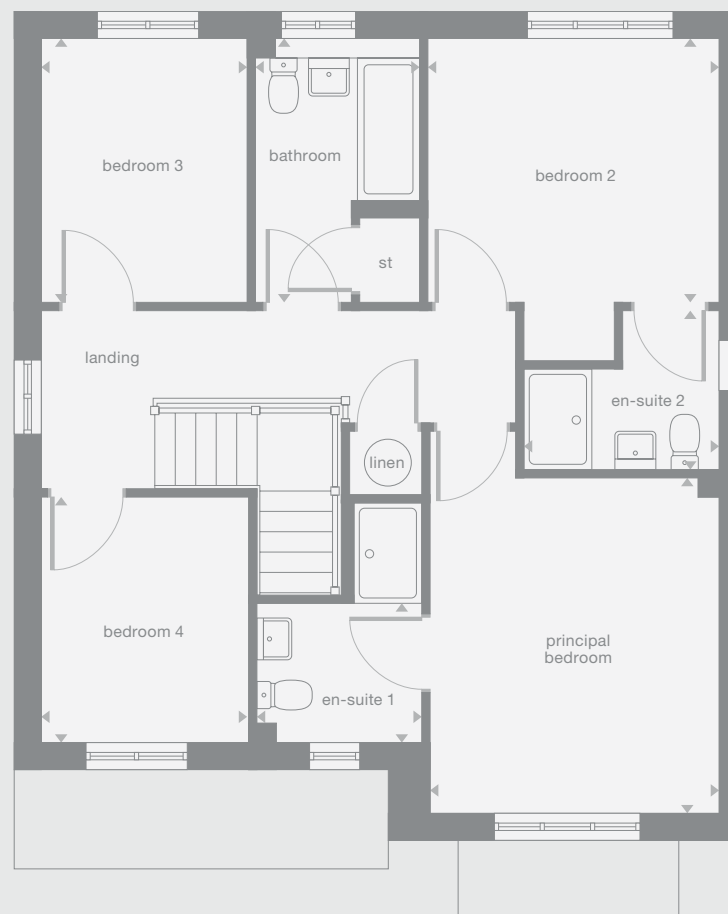
Plots may be a mirror image of the floor plans. Please see Development Sales Manager for details



## Ground Floor



## First Floor



Photography/CGI represents typical Miller Homes' interiors and exteriors. Please note elevational treatments may vary. All plans in this brochure are not drawn to scale and are for illustrative purposes only. Consequently, they do not form part of any contract. Room layouts are provisional and may be subject to alteration. Please refer to the 'Important Notice' section at the back of this brochure for more information.



# The Miller Difference

**The Miller Difference**  
Every home we build is the start of an adventure. For more than 85 years we've watched people stamp their individual personalities on the homes we build. What we create is your starting point. Our job is to make sure it's the best one possible.

**Shaped around you**  
For more than three generations, we've been listening to our customers. We know what you expect: the highest quality materials, the most skilled workmanship, ready to be shaped around your lifestyle.

**Built on trust**  
Figures and statistics matter. We have, for example, a five star rating for Customer Satisfaction, the best possible, from the Home Builders Federation.

Even more important, though, is the feedback we get from our customers. After we've been with them on the journey from their first enquiry to settling into their new home, well over 90% say they would recommend us. That's the real measure of the trust they place in us.

**Helping where we can**  
You might already have a clear picture of life in your new home. Or it might be a blank canvas. Either way, getting there is an exciting journey of discovery. And we're here to help.

From the first time you contact us, whether by phone, video call or a tour of a show home, we'll be listening carefully. Only you know what you want, but we'll be working with you to achieve it.

And we'll still be on hand, ready to help, long after you move in, quietly sharing your pride and satisfaction.

**Pushing up standards**  
From beautiful locations and superb architectural design to meticulous construction work and exceptional finishes, our expertise is widely acknowledged. Our award-winning developments embrace state-of-the-art technologies and green thinking, but we never lose sight of the importance of craftsmanship. Every step is subject to rigorous Quality Assurance checks, and we reward our highly trained teams for safe and careful practice.

**A smooth customer journey**  
Our award-winning service reflects the same high standards. As we guide you through your choices, decades of experience inform every step. So you can relax and enjoy the journey, knowing you have all the information you need.

**With you every step of the way**  
After meeting your Development Sales Manager, who will help you choose and buy your new home, you'll be introduced to your Site Manager, who will be responsible for every aspect of the building work. They'll both be happy to answer any questions you have.

**Fully involved**  
Your new home will quickly be moulded to your personal choices. So will our service. Once you tell us how you want to keep in touch, whether by phone, text, email, our custom designed app or via our website, that's how we'll keep you regularly updated and informed. You'll be able to access all the records of meetings, and see what happens next.

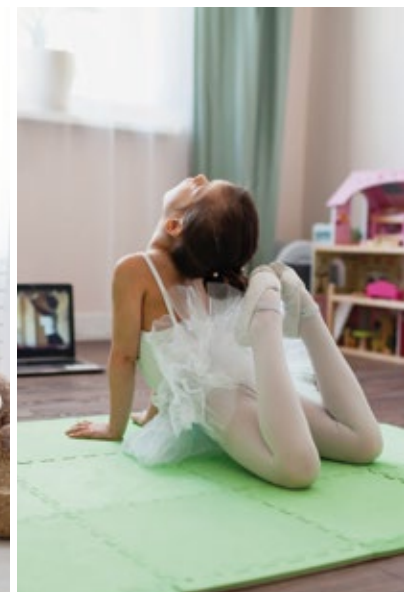
**Make it your own**  
Even before you move in, there's the excitement of planning your interior. Choosing tiles and worktops, making decisions about appliances. We'll help wherever we can. Our Visualiser, for example, can help you make selections online then see them for real in the Sales Centre. Already, it's becoming your own, personal, space.

At a safe time during building, we'll invite you to visit your new home for a Progress Meeting where you can see the craftsmanship and attention to detail for yourself before it's covered up by fittings and finishes.

**A place to grow**  
For us, the mark of success is seeing every home become unique, an individual reflection of the people who live there, and watching it become part of a thriving community.

By creating sustainable homes, in sustainable communities, we're helping to build a sustainable future for everyone. Including ourselves.

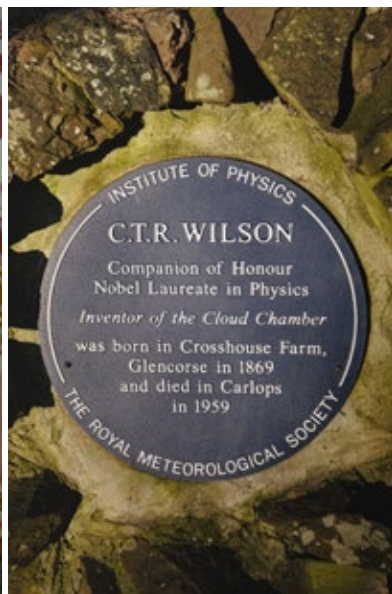
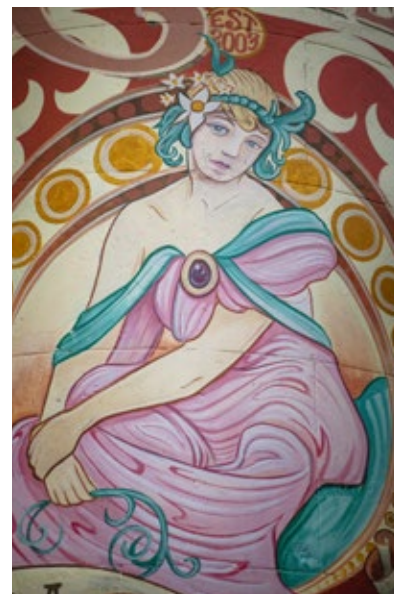
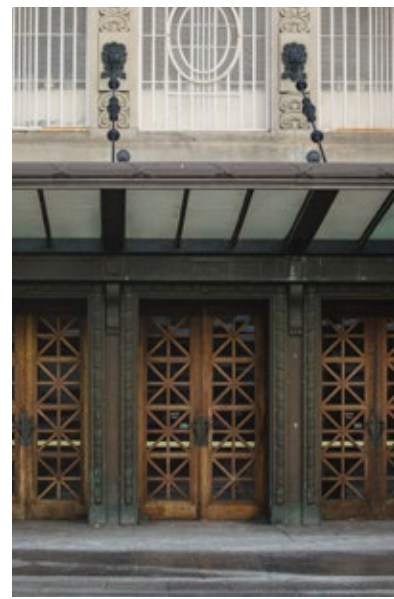
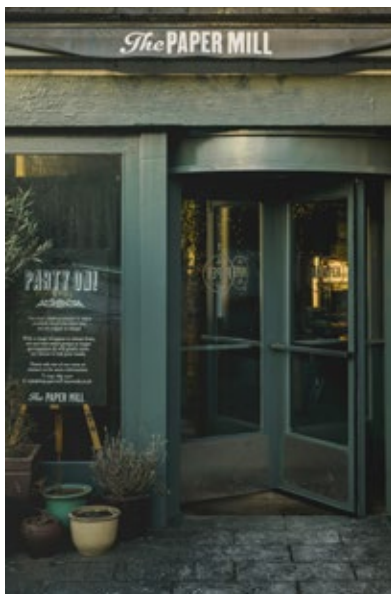
your home  
your way...





In addition to a large leisure centre with a 25m swimming pool, gym and fitness studio and sports hall at Gracemount, amenities in easy reach include a gym at Straiton Retail Park, Eden Rock climbing gym in Loanhead, and the superb Midlothian Snowsports Centre at Hillend. Nearby golf courses include King's Acre and Broomieknowe. Amongst the more unusual attractions, Gilmerton Cove is a mysterious man-made network of underground passages, discovered over 200 years ago. The outstanding choice of outdoor amenities ranges from the magnificent expanse of Dalkeith Country Park, with its adventure play and breathtaking Go Ape zip wires and towering platforms, to the wild expanse of the Pentland Hills. Local Cycle Route 61 links Edgelaw View with Bilston Glen, Loanhead and Roslin. For days and evenings out, Edinburgh's celebrated theatres, cinemas, museums and galleries, bars and restaurants, are just a short trip away.

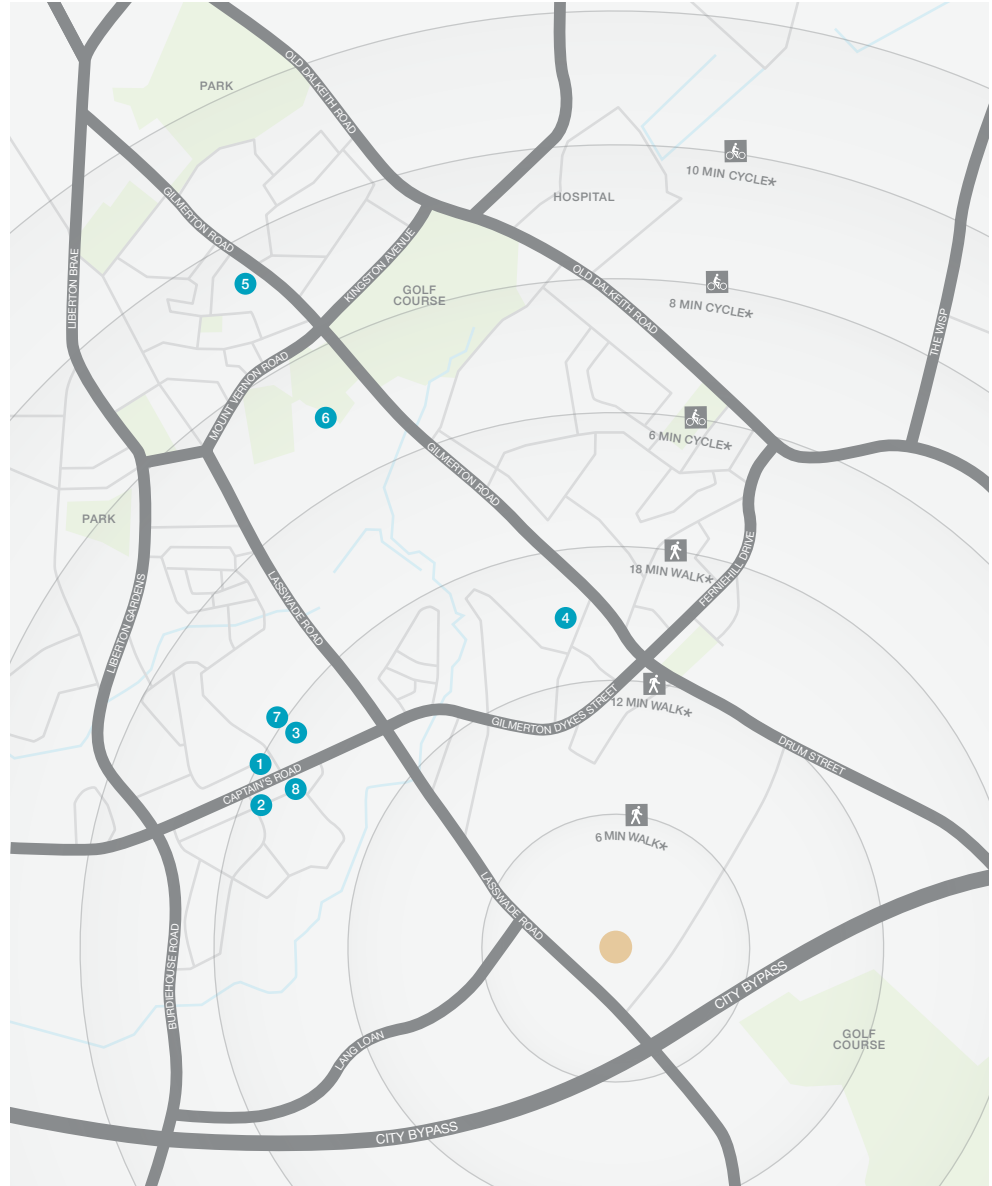
Edgelaw View is in the catchment areas for Gilmerton Primary and St John Vianney RC Primary Schools, and for Liberton High School and Holy Rood RC secondary Schools. Gracemount Medical Practice, next to the leisure centre, is a large full-time surgery and there is a convenient dental surgery at Gracemount. The development is just three miles from the A&E services at the Royal Infirmary of Edinburgh.





# Useful Contacts

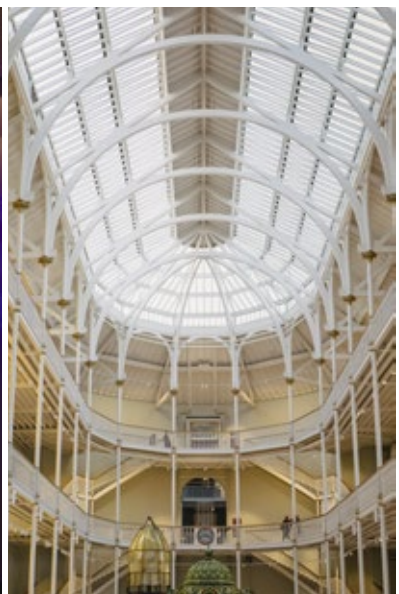
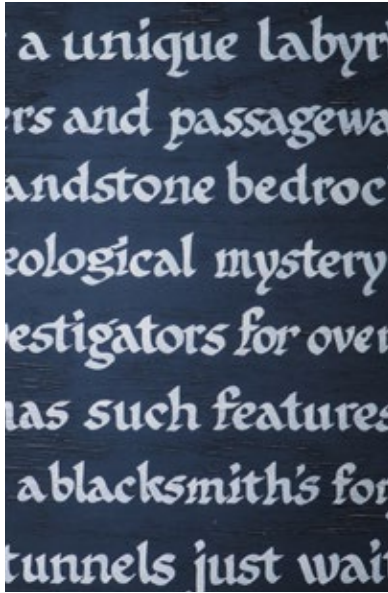
When you leave the car at home and explore the local area by foot or bicycle, you get to know it so much better. And by using local shops and services, you'll help to keep the neighbourhood vibrant and prosperous. Every place has its own personality, and once you move in you'll soon find your favourite walks, and the shops you like best. As a starting point this map shows some of the most useful features and services within a short stroll or bike ride.



- 1 Gordons Chemists  
1 Gracemount Drive  
0131 664 2249
- 2 Gracemount Post Office  
1,3 Southhouse Avenue  
0131 658 1031
- 3 Gracemount Leisure Centre  
22 Gracemount Drive  
0131 458 2100
- 4 Gilmerton Primary School  
Moredun Dykes Road  
0131 664 3614
- 5 St John Vianney RC Primary School  
Ivanhoe Crescent  
0131 664 1742
- 6 Liberton High School  
328 Gilmerton Road  
0131 664 7514
- 7 Gracemount Medical Practice  
24 Gracemount Drive  
0131 664 2377
- 8 Shanks Dental Care  
55 Captain's Road  
0131 664 2184

\* Times stated are averages based on approximate distances and would be dependent on the route taken.

Based on:  
 0.5km = 5 to 7 mins walk  
 1.0km = 10 to 14 mins walk  
 1.5km = 15 to 21 mins walk  
 2.0km = 5 to 8 mins cycle  
 2.5km = 6 to 10 mins cycle  
 3.0km = 7 to 12 mins cycle  
 3.5km = 8 to 14 mins cycle  
 4.0km = 10 to 16 mins cycle  
 4.5km = 12 to 18 mins cycle  
 5.0km = 14 to 20 mins cycle





# Contact Us

For development opening times please refer to [millerhomes.co.uk](http://millerhomes.co.uk) or call 0800 840 8406

Sat Nav: EH17 8DE

The homes we build are the foundations of sustainable communities that will flourish for generations to come. We work in harmony with the natural environment, protecting and preserving it wherever we can. With our customers, colleagues and partners, we strive to promote better practices and ways of living. We're playing our part in making the world A Better Place.

a better place®



Registered Developer

**Important Notice:**  
Although every care has been taken to ensure the accuracy of all the information given, the contents do not form part of any contract, or constitute a representation or warranty, and, as such, should be treated as a guide only. Interested parties should check with the Development Sales Manager and confirm all details with their solicitor. The developer reserves the right to amend the specification, as necessary, without prior notice, but to an equal or higher standard. Please note that items specified in literature and showhomes may depict appliances, fittings and decorative finishes that do not form part of the standard specification. The project is a new development which is currently under construction. Measurements provided have not been surveyed on-site. The measurements have been taken from architect's plans, and, as such, may be subject to variation during the course of construction. Not all the units described have been completed at the time of going to print and measurements and dimensions should be checked with the Development Sales Manager and confirmed with solicitors.

*the place to be®*



## Why Miller Homes?

We've been building homes since 1934, that's three generations of experience. We've learned a lot about people and that's made a big difference to what we do and how we do it.

We're enormously proud of the homes we build, combining traditional craftsmanship with new ideas like low carbon technologies. The big difference is that we don't stop caring once we've finished the building, or when we've sold the house, or even once you've moved in. We're there when you need us, until you're settled, satisfied and inviting your friends round.



5 stars for customer satisfaction

### Development Opening Times

Please see [millerhomes.co.uk](http://millerhomes.co.uk) for development opening times or call 0800 840 8406

Sat Nav: EH17 8DE

[millerhomes.co.uk](http://millerhomes.co.uk)

**millerhomes**

*the place to be®*