

2 BEDROOM FLAT, TALBOT SQUARE, LONDON W2 1TS

ASKING PRICE: £2,595.00 pcm



020 3982 8282 | info@astonsquare.co.uk

www.astonsquare.co.uk

**aston
square**



2 BEDROOM FLAT, TALBOT SQUARE, LONDON W2 1TS

ASKING PRICE: £2,595.00 pcm

HOLDING DEPOSIT: £598.84

SECURITY DEPOSIT: £2,994.23



1 bath



2 bed



1 open-space kitchen

Score	Energy rating	Current	Potential
92+	A		
81-91	B		
69-80	C	78 C	80 C
55-68	D		
39-54	E		
21-38	F		
1-20	G		

A fully furnished property
Available from: 07.08.2025

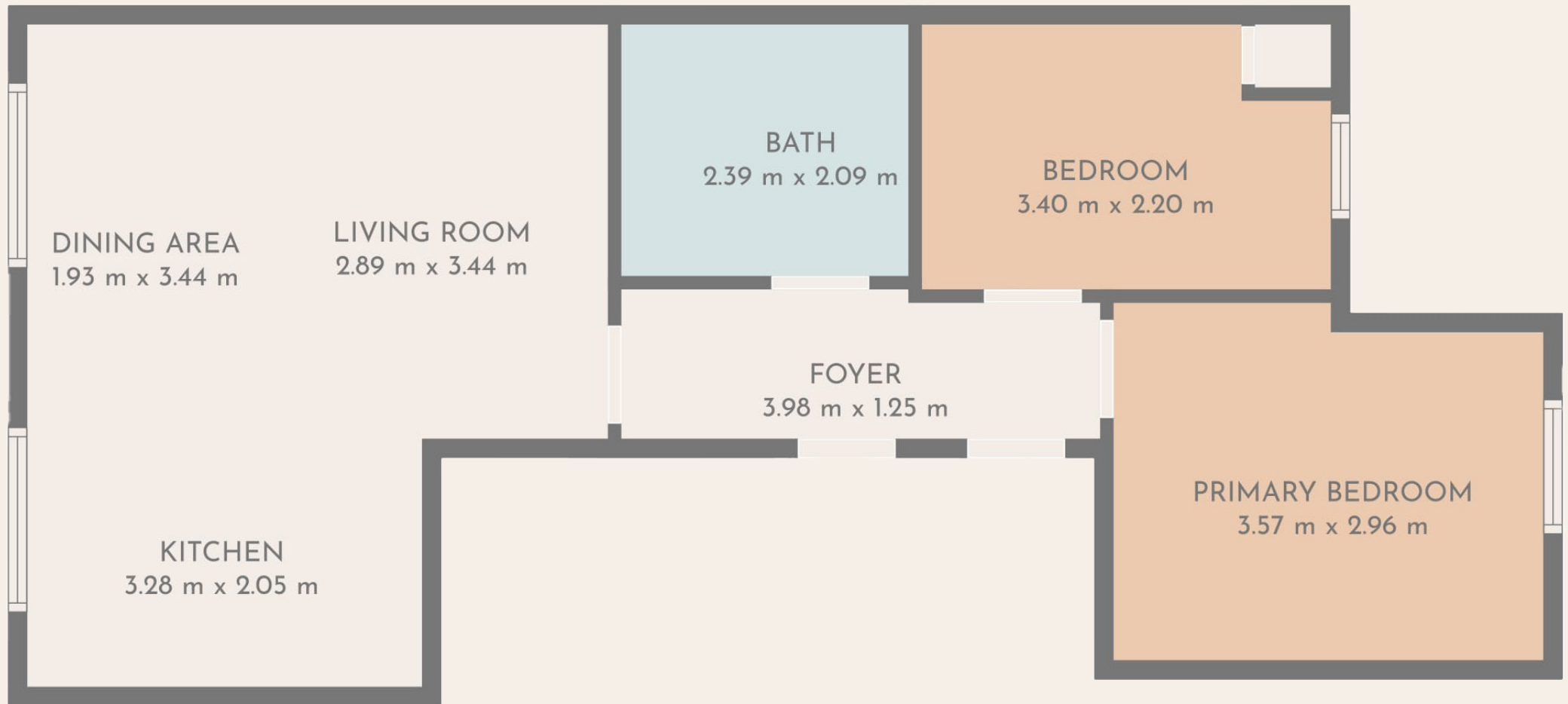
Council tax band: E
(Westminster council)
EPC Rating: C

Located in the elegant Talbot Square, this bright and spacious two-bedroom flat offers comfortable living in the heart of central London. The property features a generous open-plan living room and kitchen flooded with natural light. Two well-sized bedrooms and a modern bathroom complete the space. Just moments from the green open spaces of Hyde Park and Kensington Gardens, and with Paddington Station (National Rail, Underground and Elizabeth Line) on your doorstep, this flat combines tranquillity with unbeatable connectivity. A great EPC rating adds to its appeal.



2 BEDROOM FLAT, TALBOT SQUARE, LONDON W2 1TS

Total: 58 m² | Floor 1: 58 m²



FLOOR PLAN CREATED BY CLINICASA APP MEASUREMENTS
DEEMED HIGHLY RELIABLE BUT NOT GUARANTEED



**WE'D BE DELIGHTED
TO TELL YOU MORE
LET'S TALK.**

020 3982 8282
info@astonsquare.co.uk
www.astonsquare.co.uk

**aston
square**