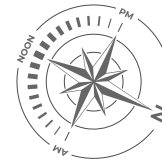
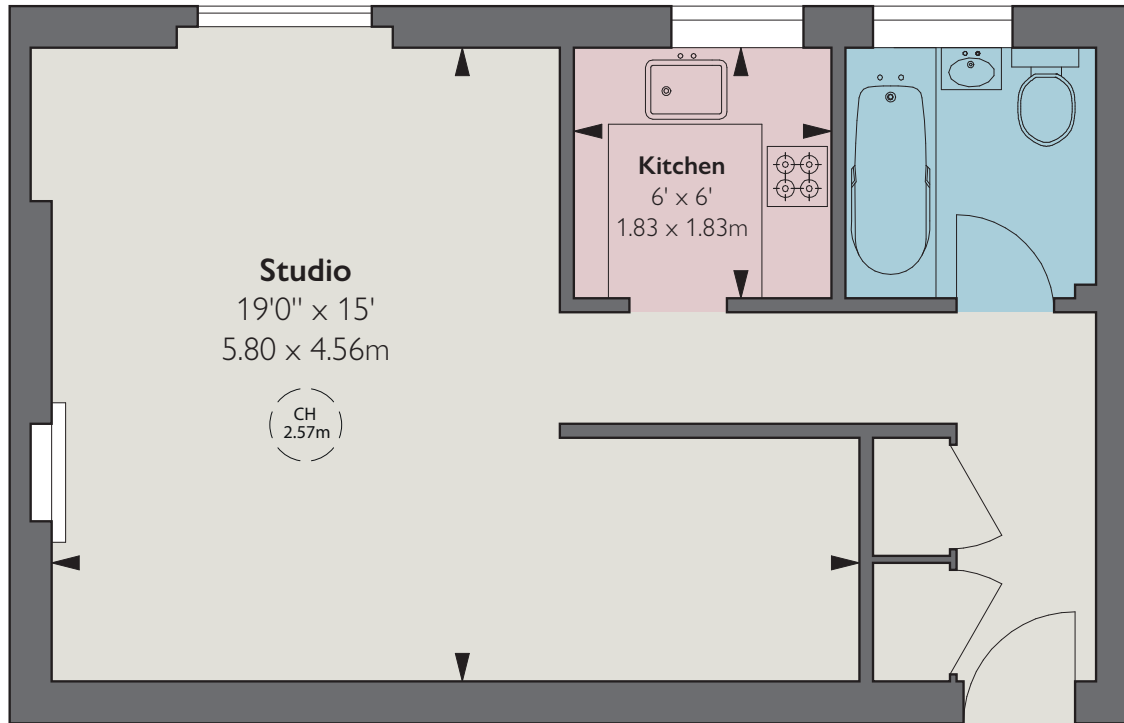


Meriden Court

CHELSEA SW3





**Approximate Gross
Internal Area**
373 sq ft / 34.65 sq m

CH: Ceiling height

Floorplan for guidance only, not to scale or for valuations purposes. It must not be relied upon as a statement of fact. All measurements and areas are approximate and have been prepared in accordance with the current edition of the RICS Code of Measuring Practice.

© Alex Winship Photography Ltd.

**Second
Floor**

A charming and light-filled studio apartment in a sought-after portered building in the heart of Chelsea.

The flat has a quiet west-facing outlook and is well-laid out to maximise the space. It is on the door step of the Kings Road, and South Kensington is just a short walk away.

Tenure Leasehold expiring 23 December 2122

Service Charge £6,217.96 per annum

Local Authority Royal Borough of Kensington & Chelsea

EPC C

fgconsultants

020 7937 7787

www.fgconsultants.com
4 Pembroke Mews, London W8 6ER