



EGERTON TERRACE

KNIGHTSBRIDGE SW3

EGERTON
TERRACE
KNIGHTSBRIDGE SW3

A FIVE-STOREY FAMILY HOUSE IN ONE OF CENTRAL
LONDON'S MOST DESIRABLE ADDRESSES,
AVAILABLE FOR THE FIRST TIME IN DECADES





THE PROPERTY

A prestigious grade II listed stucco-fronted family house over five floors with both front and rear gardens.

The ground floor presents a formal dining room at the front of the house and a kitchen/breakfast room overlooking the back garden with floor-to-ceiling windows.

The first floor offers a fantastic space for entertaining with a double reception room boasting ceiling heights of approximately 3.31 metres.

The principal suite complete with dressing room and bathroom, is set across the whole of the second floor.

Two further bedrooms and a bathroom can be found on the third and final floor.

The lower ground floor, which can also be accessed by its own external entrance, currently provides a bedroom, bathroom, guest cloakroom and a study/sitting room.





LOCATION

This rare opportunity in Egerton Terrace is located close to an impressive array of shops and restaurants in Knightsbridge and Belgravia. Hyde Park can be found 0.6 miles away and transport links include; South Kensington Underground (0.5 miles), Knightsbridge Underground (0.6 miles), Victoria Underground and National Rail Services (1.5 miles).

TERMS

Guide Price:
In excess of £7,500,000
Tenure: Freehold
Local Authority:
The Royal Borough of Kensington and Chelsea
Council Tax:
Band H
EPC:
Rating D

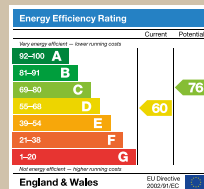
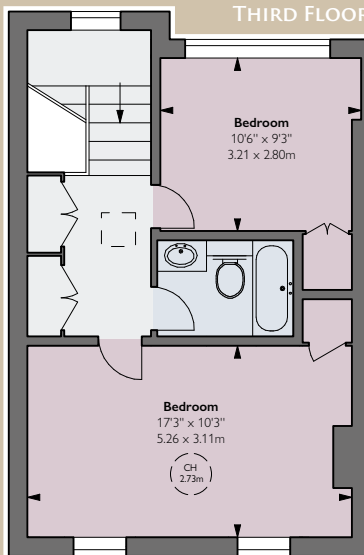
APPROXIMATE
GROSS INTERNAL AREA
2,917 sq ft / 270 sq m excluding vault

VAULT AREA
57 sq ft / 5.30 sq m

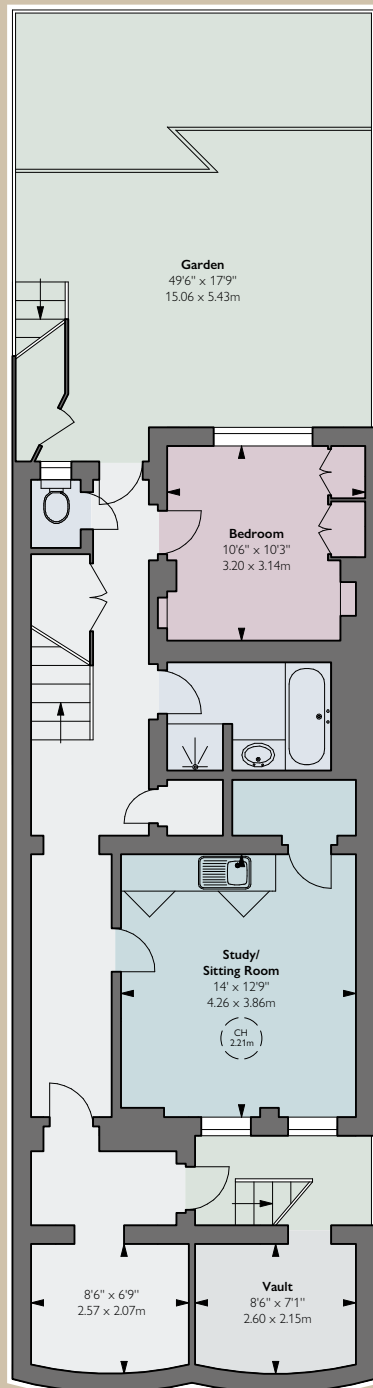
TOTAL APPROXIMATE
GROSS INTERNAL AREA
2,974 sq ft / 276.28 sq m



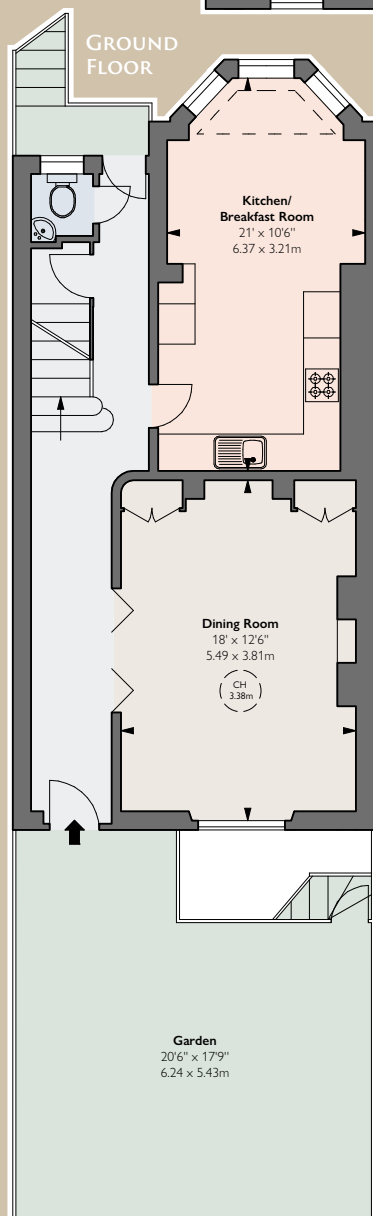
THIRD FLOOR



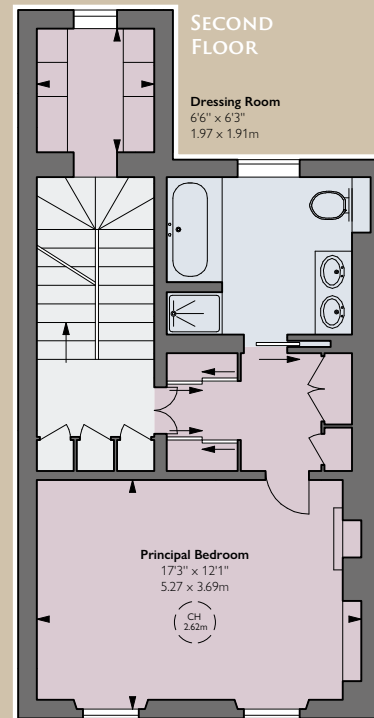
LOWER GROUND FLOOR



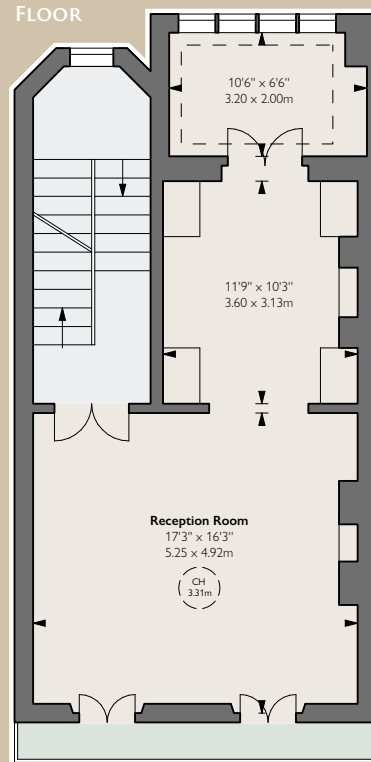
GROUND FLOOR



SECOND FLOOR



FIRST FLOOR



Viewing: Strictly by appointment with Savills. Important notice: Savills, their clients and any joint agents give notice that: 1. They are not authorised to make or give any representations or warranties in relation to the property either here or elsewhere, either on their own behalf or on behalf of their client or otherwise. They assume no responsibility for any statement that may be made in these particulars. These particulars do not form part of any offer or contract and must not be relied upon as statements or representations of fact. 2. Any areas, measurements or distances are approximate. The text, photographs and plans are for guidance only and are not necessarily comprehensive. It should not be assumed that the property has all necessary planning, building regulation or other consents and Savills have not tested any services, equipment or facilities. Purchasers must satisfy themselves by inspection or otherwise. 27/05/25 SAVILLS-231108D-07GG