

# CHERRY TREE HOUSE

PRIMROSE HILL NW8





A most elegant and beautifully designed home discreetly tucked away in this sought-after location just moments from Regents Park and Primrose Hill. The low-built house is reached through a tranquil gated courtyard garden and offers both privacy and an oasis of calm. There is also a southeast-facing first floor terrace. Cherry Tree House has been finished to the highest standard and has featured in House & Garden magazine.

#### Accommodation

- Open-plan kitchen and reception room
- Principal bedroom suite with terrace
- 2 Further bedrooms
- Shower room
- WC

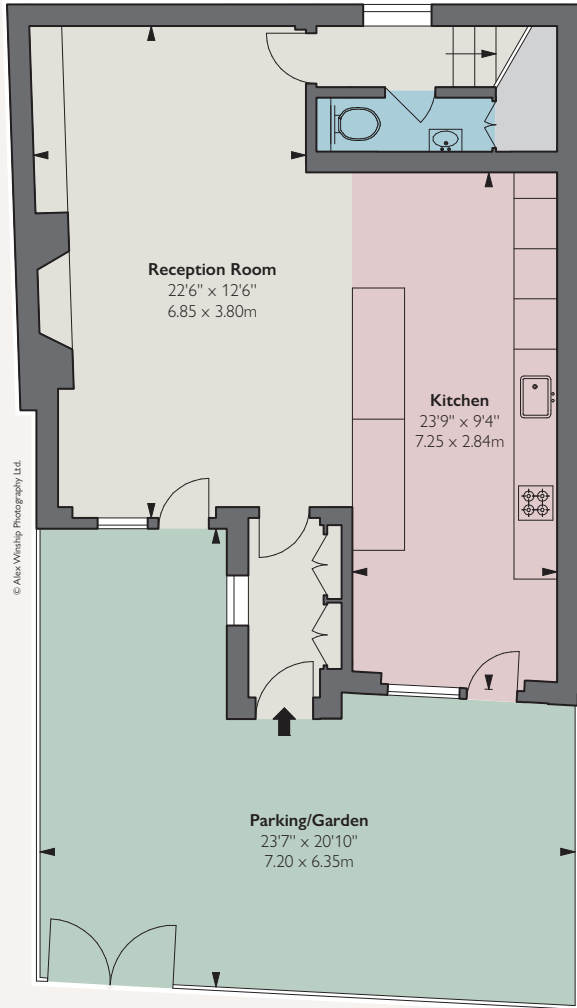
**Tenure**  
Freehold

**Guide Price**  
£3,000,000

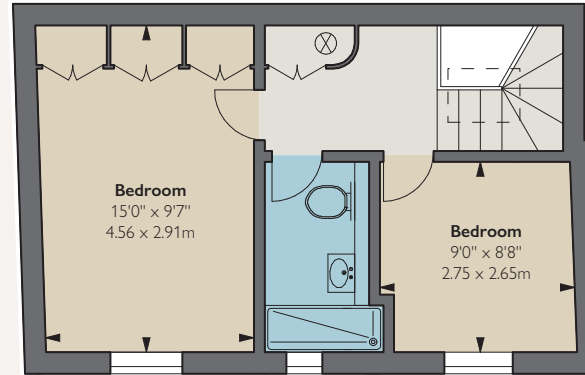
**Local Authority**  
Borough of Camden

**Council Tax**  
Band H

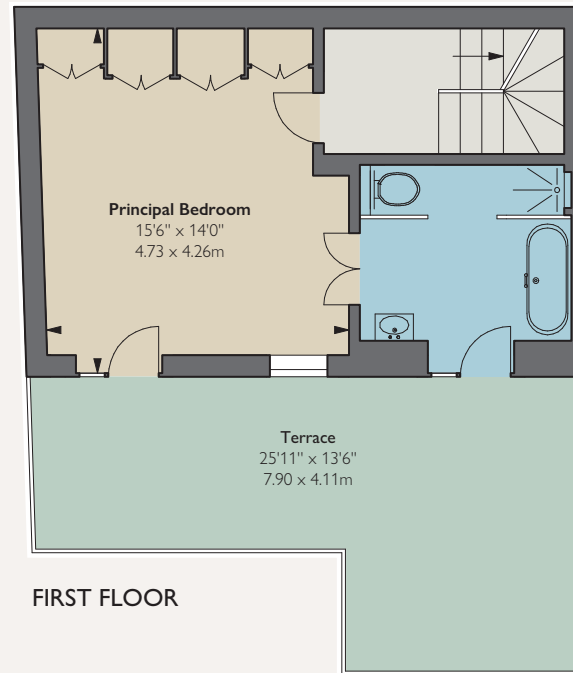




GROUND FLOOR



SECOND FLOOR



FIRST FLOOR



**APPROXIMATE GROSS INTERNAL AREA**

1,357 sq ft / 126.16 sq m

CH: Ceiling Height

Floorplan for guidance only, not to scale or valuations purposes. It must not be relied upon as a statement of fact. All measurements and areas are approximate and have been prepared in accordance with the current edition of the RICS Code of Measuring Practice.

@ Alex Winship Photography



**fg**consultants

020 7937 7787

[www.fgconsultants.com](http://www.fgconsultants.com)

4 Pembroke Mews, London W8 6ER