

PROPERTY PARTICULARS

MULTI-USE/LEISURE

**TREVOR
DAWSON**

COMMERCIAL PROPERTY CONSULTANTS

01254 681133
www.tdawson.co.uk

TO LET



THE THEATRE COMPLEX FORMER ST MARY'S COLLEGE SHEAR BROW BLACKBURN BB1 8DX

- Former theatre/studio complex.
- Ample parking at the site.
- 13,810 sq. ft.
- Competitive terms.

LOCATION

The complex is situated on the edge of Blackburn Town Centre with motorway access via Junction 6 of the M65, three miles to the east, and Junction 32 of the M6 to the west.

Lying within predominantly residential area with a substantial frontage to Shear Brow with commercial retail uses adjoining the site. Public transport is excellent and the central railway station is within walking distance.

DESCRIPTION

The property forms part of the former St Mary's College and provides a double height building of steel framed construction beneath a flat roof.

The property comprises a theatre with tiered seating, dance studio and classrooms.

ACCOMMODATION

The complex comprises 13,810 sq. ft.

SERVICES

All mains services are available. However, it is the incoming tenant's responsibility to verify that all appliances, services and systems are in working order, are of adequate capacity and suitable for their purpose.

PLANNING

It is the incoming tenant's responsibility to verify that their intended use is acceptable to the local Planning Authority who can be contacted on 01254 585585.

RATING

The property will be re-assessed upon occupation. A guide is available on request.

ENERGY PERFORMANCE CERTIFICATE

An Energy Performance Certificate has been commissioned and will be made available upon request.

LEASE TERMS

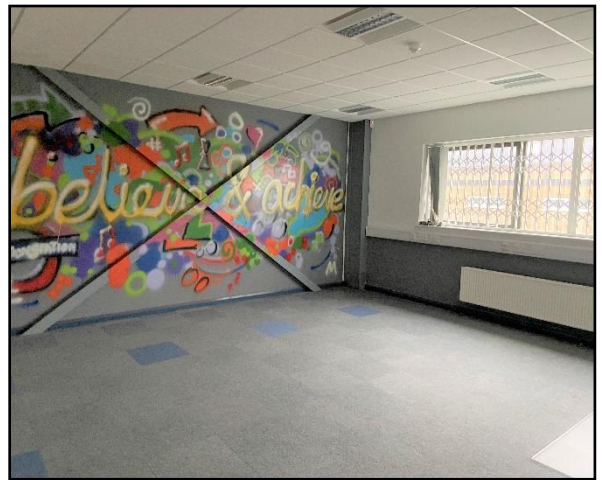
For a term of years to be agreed on an internal repairing basis.

RENTAL

RENTAL DETAILS UPON REQUEST.

VAT

VAT will be charged on the rental at the current prevailing rate.



VIEWING

STRICTLY BY APPOINTMENT WITH SOLE AGENTS TREVOR DAWSON LIMITED OF CAPRICORN HOUSE, CAPRICORN PARK, BLAKEWATER ROAD, BLACKBURN, BB1 5QR. OUR REF CEJ LMH 2205.12998 Email caroline@tdawson.co.uk

Misrepresentation: Trevor Dawson Ltd. for themselves and for the vendors or the lessors of this property whose agents they are give notice that i) the particulars are set out as a general outline only for guidance of the intended purchaser or lessees and do not constitute any part of an offer or contract. ii) All descriptions, dimensions, references to condition and necessary permissions for use and occupation, and other details are given in good faith but without responsibility and intending purchasers or tenants should not rely on them as statements or representations of fact but must satisfy themselves by inspection or otherwise as to the correctness of them. iii) No person in the employment of Trevor Dawson Ltd. has any authority to make or give any representation or warranty whatever in relation to this property.

Trevor Dawson, Commercial Property Consultants, is a trading name of Trevor Dawson Ltd.
A company registered in England and Wales. Registered office at Capricorn House. Registered number 09533426

**TREVOR
DAWSON**

COMMERCIAL PROPERTY CONSULTANTS

01254 681133
www.tdawson.co.uk