

## SANTA PONSA

REF :: REI1030

LOCATION :: Santa Ponsa

TYPE :: Villa

FLOOR SIZE :: 414 m2

PLOTSIZE :: 1042 m2

BEDROOMS :: 4

BATHROOMS :: 4

FLOORS:: 2

BALCONY :: Yes

TERRACE :: Yes

VIEW :: Garden

POOL :: Yes

ELEVATOR :: Yes

PARKING :: Yes

**PRICE :: 4,750,000 €**

This majestic and spacious villa with high ceilings and big pool has a great location in Santa Ponsa, close to Port Adriano, beaches and golf courses. This magnificent property of an impressive 414 m2 living space, complemented by a spacious 312 m2 basement offering endless possibilities.

The villa's layout features four spacious bedrooms, accompanied by four bathrooms, and a guest toilet adds a touch of practicality to the layout. The heart of the villa lies on the lower level, where a modern kitchen awaits, equipped with state-of-the-art appliances. Adjacent to the kitchen there's the living room with seamless access to a covered terrace overlooking the beautifully landscaped garden and inviting pool area.

The basement reveals a garage with ample space for your vehicles, alongside storage and utility rooms. Built with meticulous attention to detail in 2013, this home exudes sophistication and timeless elegance. Set on a generous plot of 1042 m2, the villa offers ample outdoor space for enjoying the Mediterranean climate and sunshine.



*Note! The information on the property is based on the details passed to us by the vendors, the accuracy of this data will be checked before the contract is concluded by a current registration statement.*

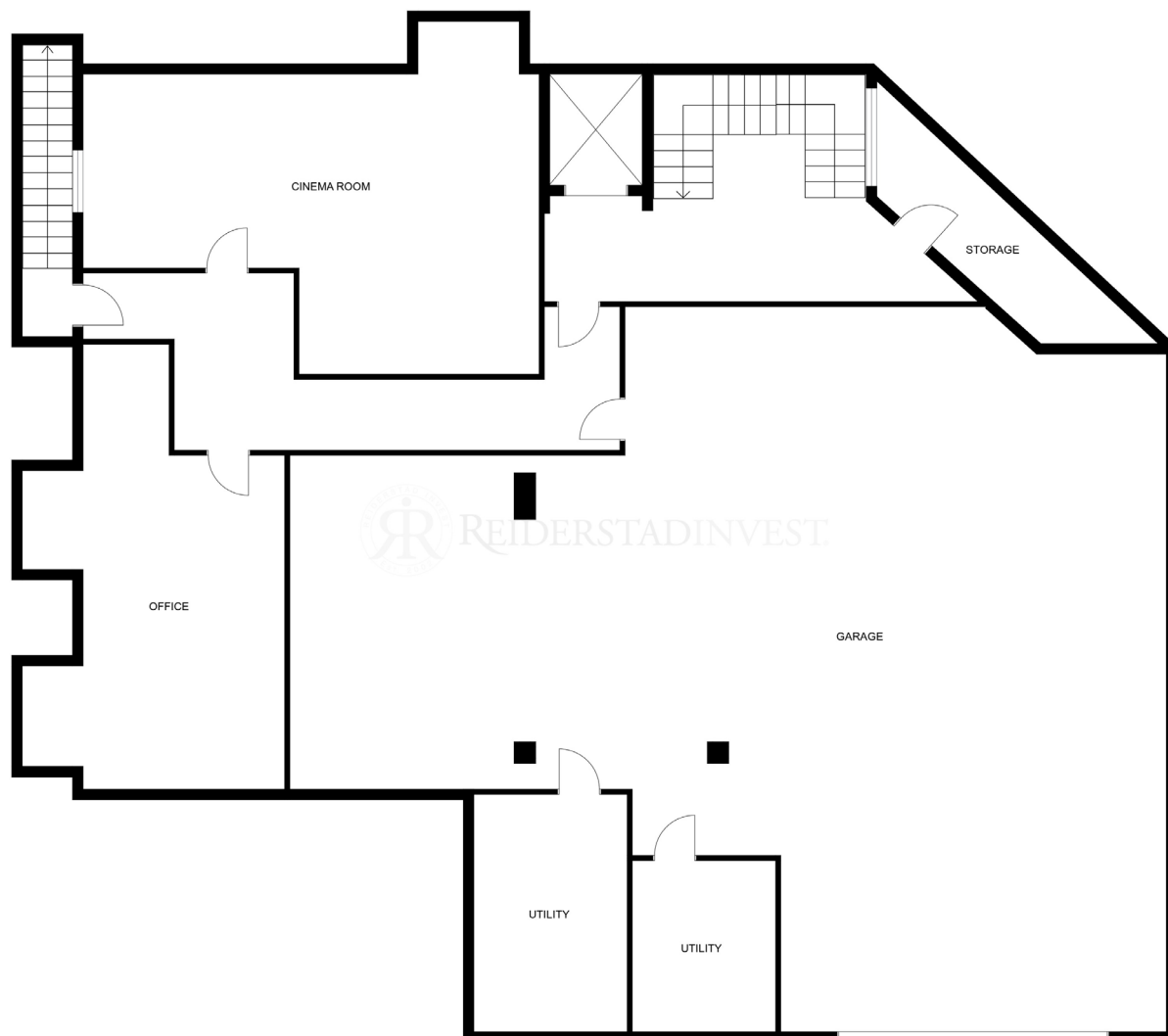


# REIDERSTADINVEST®



# REIDERSTADINVEST®





## 4 BEDROOMS

*4 bathrooms, 1 guest toilet, living room, kitchen, laundry, basement, terraces*

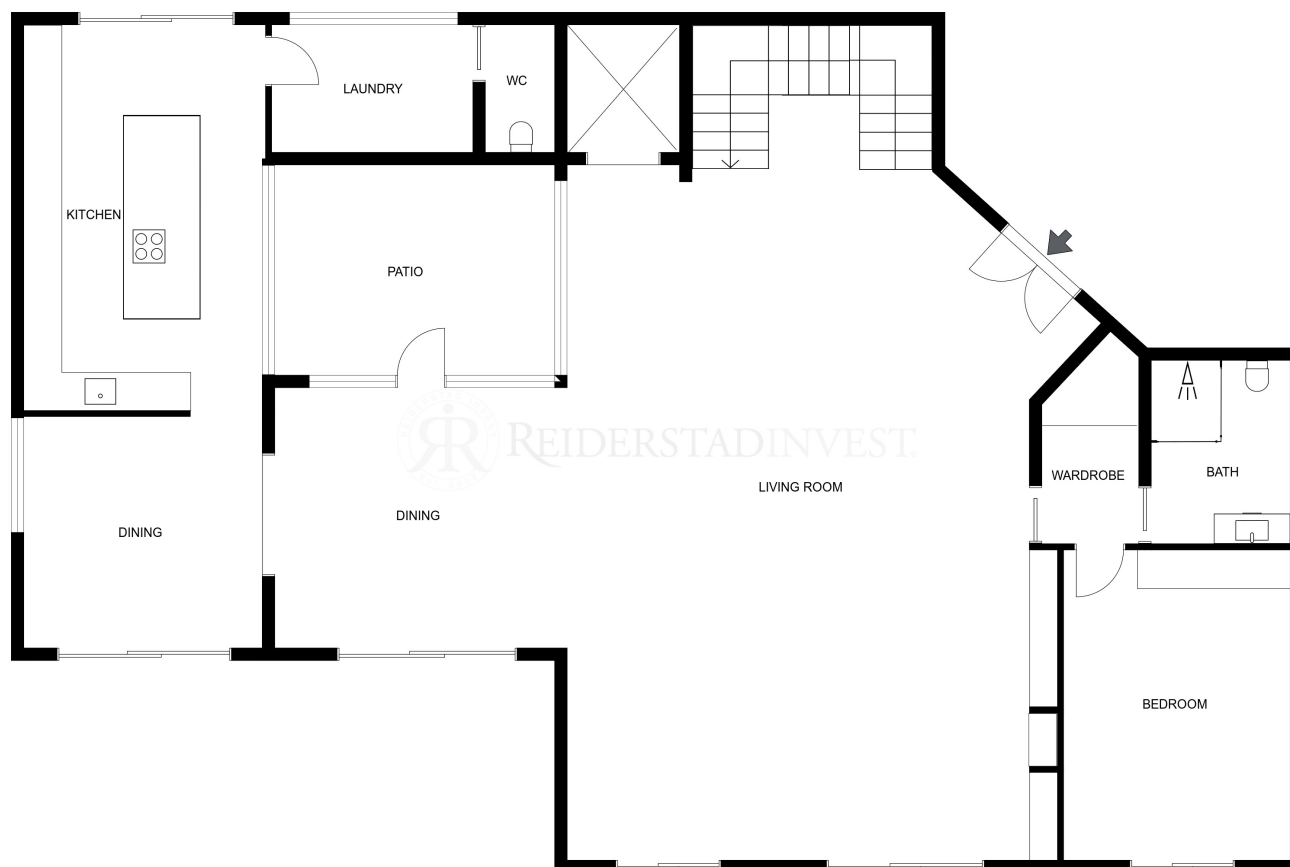
## SANTA PONSA

*Reference: REI1030  
Size: 726 m2 incl. basement*

## FLOOR PLAN

*This floorplan is not to scale and is a sketch, therefore no guarantee is given to its accuracy.*





## 4 BEDROOMS

*4 bathrooms, 1 guest toilet, living room, kitchen, laundry, basement, terraces*

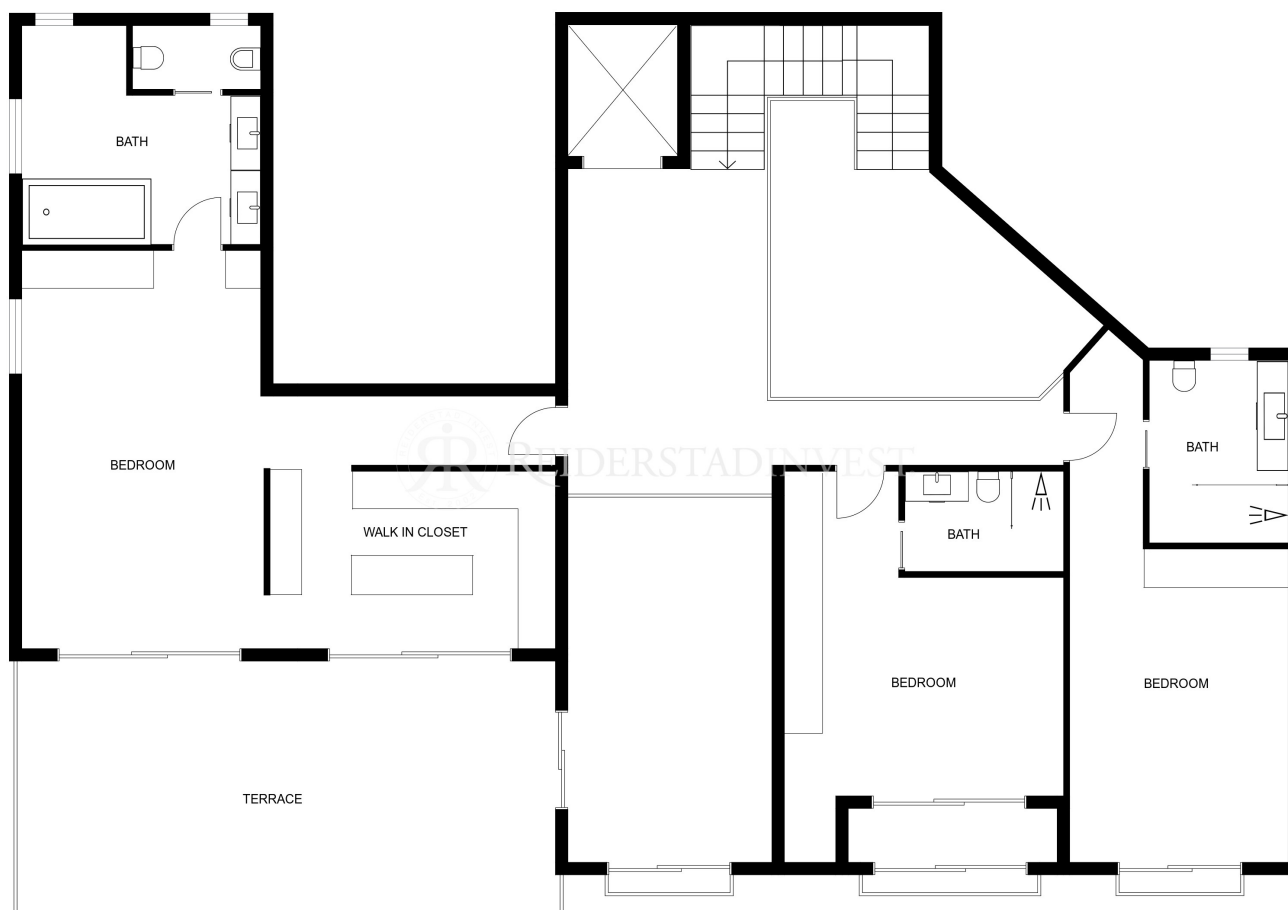
## SANTA PONSA

*Reference: REI1030  
Size: 726 m2 incl. basement*

## FLOOR PLAN

*This floorplan is not to scale and is a sketch, therefor no guarantee is given to its accuracy.*





## 4 BEDROOMS

*4 bathrooms, 1 guest toilet, living room, kitchen, laundry, basement, terraces*

## SANTA PONSA

*Reference: REI1030  
Size: 726 m2 incl. basement + terraces*

## FLOOR PLAN

*This floorplan is not to scale and is a sketch, therefore no guarantee is given to its accuracy.*

