



Kingswood Road, Brixton, SW2

1 bedroom flat to let

£416 Per Week

Furnished

Property Details

Keating Estates are proud to present this characterful one-bedroom flat situated on a quiet residential street in Brixton.

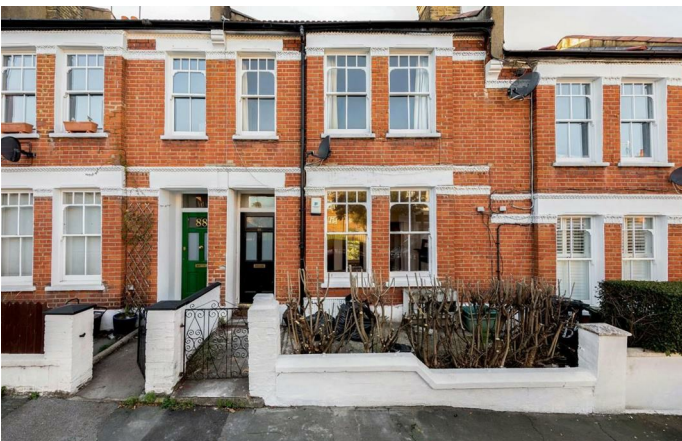
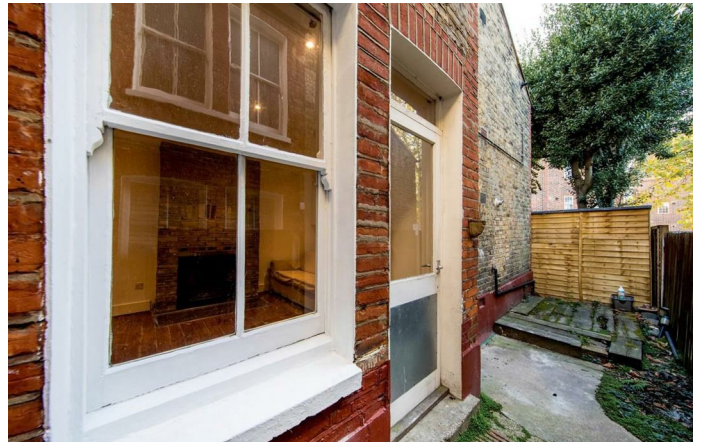
The property boasts a large separate kitchen, a spacious reception room ideal for entertaining guests, and a generously sized double bedroom with large windows that flood the space with natural light. Completing the flat is a modern, family-sized bathroom.

Conveniently located just a short stroll from the popular Brockwell Park, as well as local gyms and supermarkets, this home offers excellent lifestyle amenities. Transport links into the city are quick and easy, with Brixton and Clapham stations within walking distance, providing access to both the Victoria and Northern lines.

Council tax band C **EPC rating D (67)**

Features

- Private garden
- Excellent transport links



Kingswood Road, Brixton, SW2

K

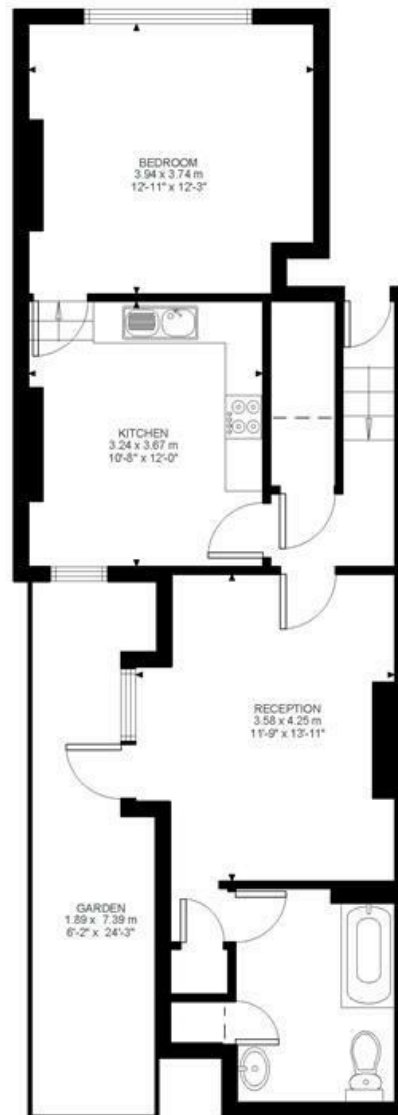
1 Bed flat

Approx internal area:

602 sqft 56 sqm

While we do try our very best, floor plans are produced as a guide only and we take no responsibility for the precise accuracy with which any property is represented

Kingswood Road



Ground Floor



Kingswood Road, Brixton, SW2

