

## Kingswood Road, Brixton, SW2

3 bedroom flat - conversion for sale

£650,000

Share of Freehold

### Property Details

An exquisite three double bedroom split-level maisonette with a private South-facing terrace, set within a handsome Victorian terraced house on Kingswood Road – a quiet, neighbourly street nestled between Brixton and Clapham. This generous home spans over 1,000 square feet and benefits from a private entrance, having been stylishly renovated throughout in recent years. An expansive reception room occupies the front of the home, flooded with light via elegant sash windows with original stained glass, high ceilings, a charming fireplace and bespoke cabinetry. A separate dine-in kitchen boasts shaker-style cabinetry, sociable island, and a dining area that opens onto a suntrap terrace, perfect for al-fresco dining. Three well-proportioned bedrooms are tastefully decorated, with the principal bedroom enjoying fitted wardrobes, feature fireplace and panelling. The main bathroom is smartly tiled with a walk-in rain shower, whilst an additional WC is conveniently located off the dining area, next to the terrace. A large loft offers around 300 square foot of boarded space which is easily accessible and great for extensive storage.

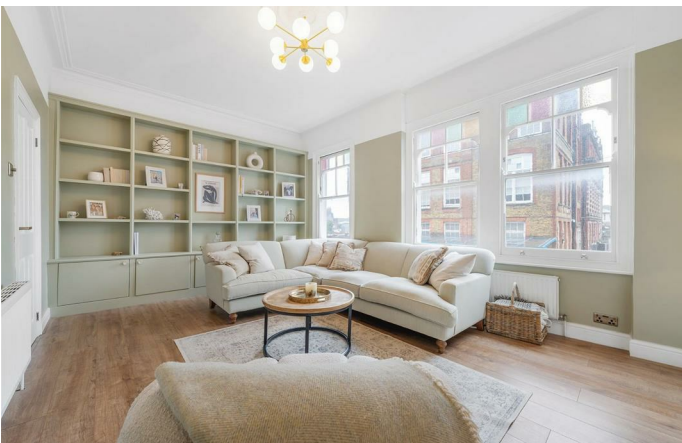
Council tax band D

EPC rating D (65)

### Features

- Three bedrooms
- Bathroom plus WC
- South-facing suntrap terrace
- Victorian maisonette
- Private entrance
- Over 1,000 square feet
- Quiet residential street
- Northern and Victoria tube lines
- Walking distance to Brixton and Clapham High Streets
- Share of freehold







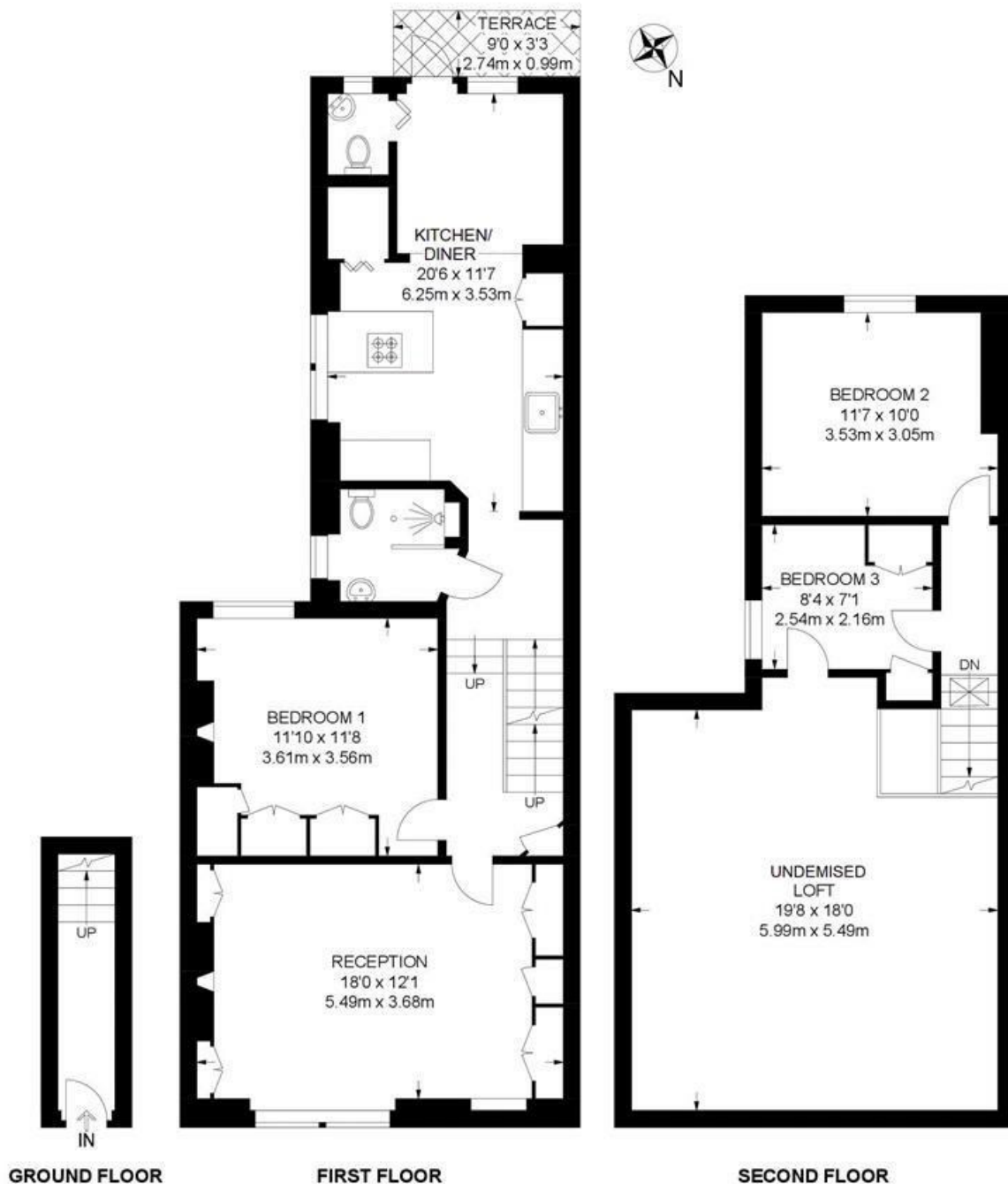


Kingswood Road, Brixton, SW2

**Kingswood Road, SW2**  
**3 Bedroom Flat**

APPROXIMATE GROSS INTERNAL AREA WITH LOFT: 1348 SQ FT / 125.2 SQ M

APPROXIMATE GROSS INTERNAL AREA WITHOUT LOFT: 1010 SQ FT / 93.8 SQ M



While we try our very best, floor plans are produced as a guide only and we take no responsibility for the precise accuracy with which any property is represented.



Kingswood Road, Brixton, SW2

