



## Montrell Road, Streatham Hill, SW2

2 bedroom flat - conversion for sale

**£575,000**

Leasehold

### Property Details

A charming and beautifully presented two double bedroom split-level apartment with a private roof terrace boasting views of The Shard, set within a handsome Victorian property on Montrell Road. Arranged over three floors, this bright and airy home enjoys spacious rooms, high ceilings, original floorboards, and generous natural light throughout. A spacious reception room with sash windows and a feature fireplace offers an inviting setting for relaxation or entertaining. The adjacent dine-in kitchen is both stylish and practical, with modern tiling, fresh paintwork, and sleek cabinetry framing a sociable dining area. French doors lead to a generous private terrace, resurfaced in 2018, providing an idyllic spot for outdoor dining with far-reaching views including The Shard. The two double bedrooms are arranged on separate floors for privacy and flexibility, while the bathroom is finished in soft grey tones with a bath and overhead shower. Further benefits include built-in storage and access to a large loft, ideal for neatly storing belongings.

### Features

- Two double bedrooms
- Sundrenched roof terrace with views reaching to The Shard
- Victorian conversion
- Beautifully presented throughout
- Almost 900 square feet
- Arranged over three floors
- Leafy residential street
- Streatham Hill a six-minute stroll
- Brixton tube is a short bus ride down Brixton Hill
- Excellent variety of transport links

Council tax band D

EPC rating E (54)





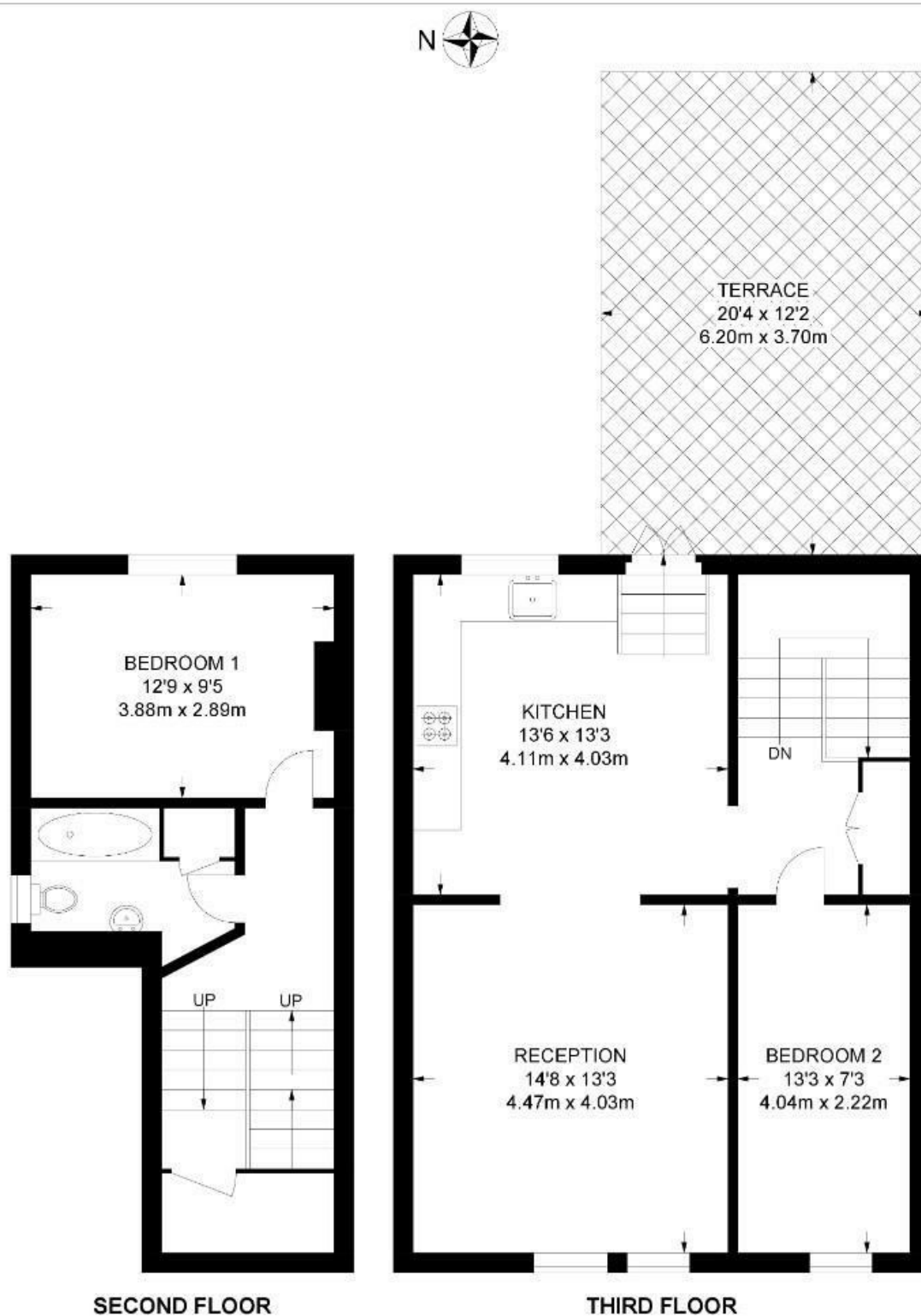




Montrell Road, Streatham Hill, SW2

**Montrell Road, SW2**  
**2 Bedroom Flat**

APPROXIMATE GROSS INTERNAL AREA: **889 SQ FT / 82.6 SQ M**



Montrell Road, Streatham Hill, SW2

