

## Medora Road, Brixton, SW2

2 bedroom flat - conversion for sale

**£550,000**

Share of Freehold

### Property Details

A charming two double bedroom Victorian garden flat with a generous private garden, set on a sleepy residential street. This beautifully presented home blends timeless character with modern comfort, perfect for contemporary living. Characterful wooden flooring flows through much of the property, enhancing the elegant proportions. The rear of the home opens into a bright, sociable open-plan reception and kitchen, enjoying dual-aspect windows and French doors that lead onto the expansive private garden. The kitchen is stylishly appointed with timber cabinetry, wooden worktops, and tiled flooring. The garden offers a paved patio, lush lawn, and mature borders, ideal for entertaining. The principal bedroom is a tranquil retreat, featuring a bay window with plantation shutters and fitted wardrobes. A central bathroom separates the bedrooms, finished in tasteful neutral tones. The second bedroom, currently used as a home office and guest room, is equally inviting with bespoke storage. Additional benefits include a cellar and scope to extend, subject to the necessary permissions, offering flexibility for the future. Plus the added bonus of new windows throughout the home.

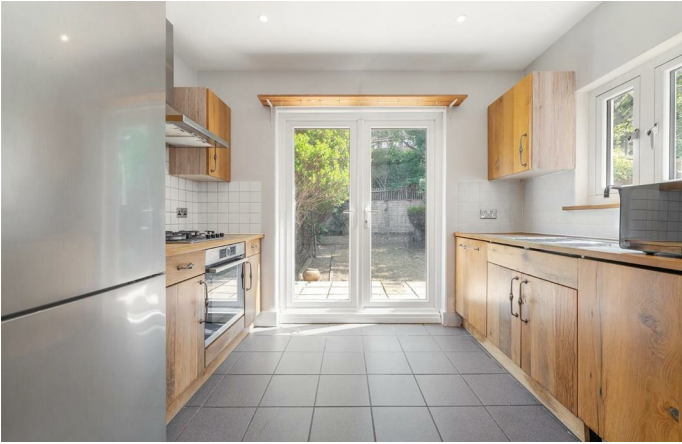
Council tax band C

EPC rating D (64)

### Features

- Two double bedrooms
- Large private garden
- Victorian conversion
- Characterful features
- Potential to extend into side return and add value (STNP)
- Quiet residential street
- Local parade of shops with cafe and pub
- A short stroll to Brockwell Park
- Central Brixton around a fifteen-minute walk
- Chain-free. Share of freehold





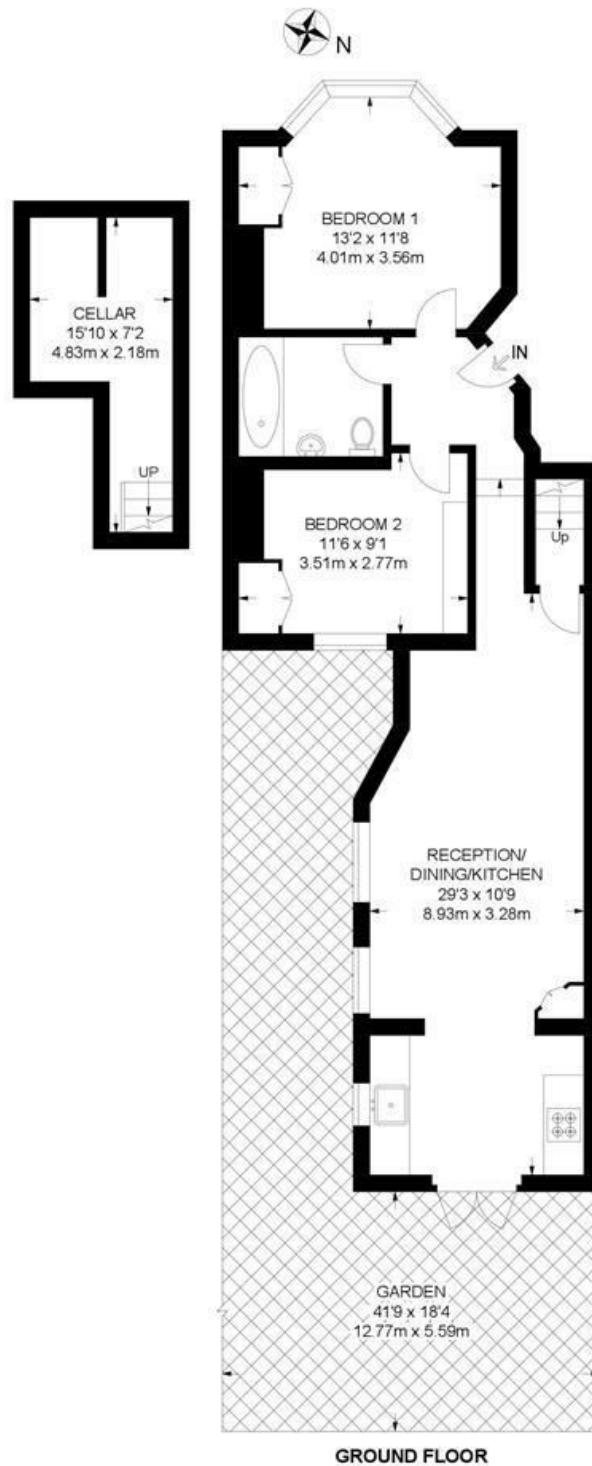
Medora Road, Brixton, SW2

**Medora Road, SW2**

**2 Bedroom Flat**

APPROXIMATE GROSS INTERNAL AREA WITH CELLAR: 733 SQ FT / 68 SQ M

APPROXIMATE GROSS INTERNAL AREA WITHOUT CELLAR: 650 SQ FT / 60 SQ M



While we try our very best, floor plans are produced as a guide only and we take no responsibility for the precise accuracy with which any property is represented.



Medora Road, Brixton, SW2

