



Poynders Road, Clapham South, SW4

2 bedroom flat to let

£380 Per Week

Part furnished

Property Details

Keating Estates are proud to present to the market this light and airy two double bedroom flat with a South-facing balcony, securely nestled on the second floor of a popular 1930s building on Poynders Road.

The heart of the home is a bright and spacious reception room, a cosy yet versatile space ideal for relaxing or entertaining. A separate modern galley kitchen is well-equipped with sleek cabinetry, wooden worktops which sweep around into a breakfast bar. The kitchen leads directly onto a delightful private South-facing terrace. The outdoor space is a real highlight, perfect for unwinding in the sun or enjoying al fresco dining during the warmer months.

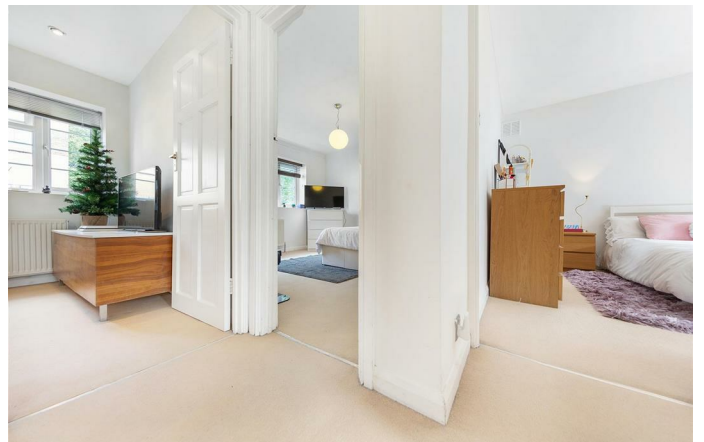
Both bedrooms are generously sized, offering a comfortable and peaceful retreat. The property's layout allows flexibility, with the potential to swap a bedroom with the lounge if a larger social space is preferred. A contemporary bathroom completes the home, featuring a bathtub with overhead shower and a neutral finish.

Situated on Poynders Road, this fantastic flat benefits from easy access to Clapham South (Northern Line) within a ten-minute, offering quick connections into central London. Balham is a similar walk down the road, offering ideal spots for brunch and lively evening entertainment. A five-minute stroll

Features

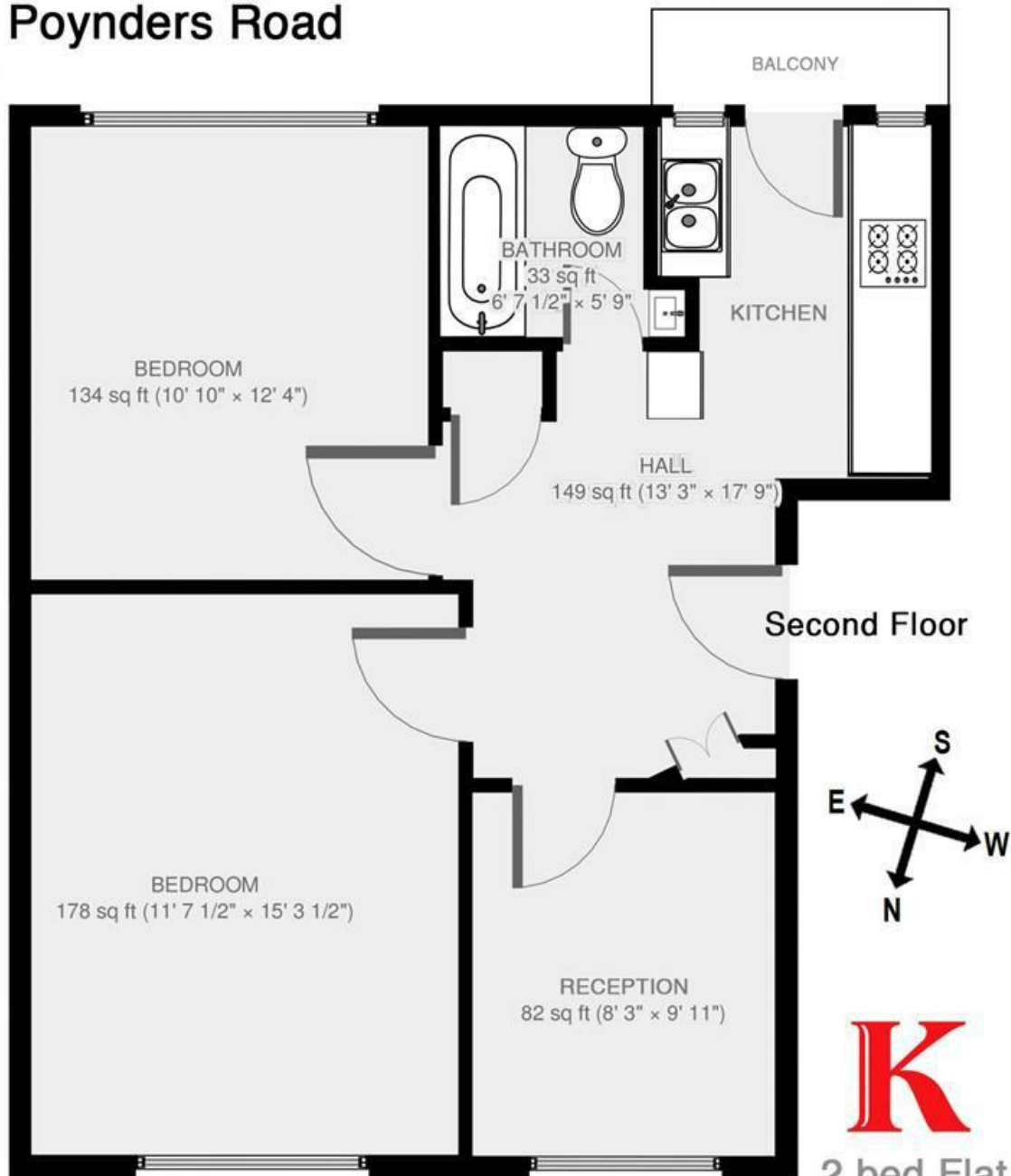
- Off-street parking
- Bright and airy throughout
- Close to transport links
- Close to clapham Common
- 2 Double Bedrooms

Council tax band A EPC rating C (71)



Poynders Road, Clapham South, SW4

Poynders Road



2 bed Flat.

Approx internal area:

611 sqft 57 sqm

While we do try our very best, floor plans are produced as a guide only and we take no responsibility for the precise accuracy with which any property is represented

Poynders Road, Clapham South, SW4

