

Hemberton Road, Clapham, SW9

2 bedroom flat - conversion for sale

£512,500

Share of Freehold

Property Details

A charming two bedroom Victorian flat with private South-facing garden on the sleepy, sought-after Hemberton Road. A large reception is packed with period charm with generous proportions to lounge or entertain. The separate kitchen has a country feel, with wrap-around cabinetry providing generous storage. This sociable room has ample space for dining. The rear garden enjoys a Southerly aspect which ensures that this is a particularly sunny spot, currently paved for ease of maintenance with the potential to landscape. Each boasting access to the garden are both bedrooms. The principal is a sizeable double with fitted wardrobes and leafy views, a quietly peaceful space in which to relax. The second bedroom is a versatile spot which can be dressed to suit needs, be it as a sunny home office and guest room, pretty nursery or a secondary snug. The neutral bathroom offers a bath with overhead shower and there is access to a cellar which is perfect for storing away those lesser used items. This appealingly versatile home is ready to move into with the potential to add your own stamp, including precedent set on the road should you wish to seek permissions to extend into the side return.

Features

- Two bedrooms
- Private South-facing garden
- Victorian conversion
- Packed full of potential
- Characterful features
- Desirable residential road
- Walking distance to Clapham, Brixton and Stockwell
- Victoria and Northern Lines
- Share of freehold
- Chain-free

Council tax band C

EPC rating D (56)



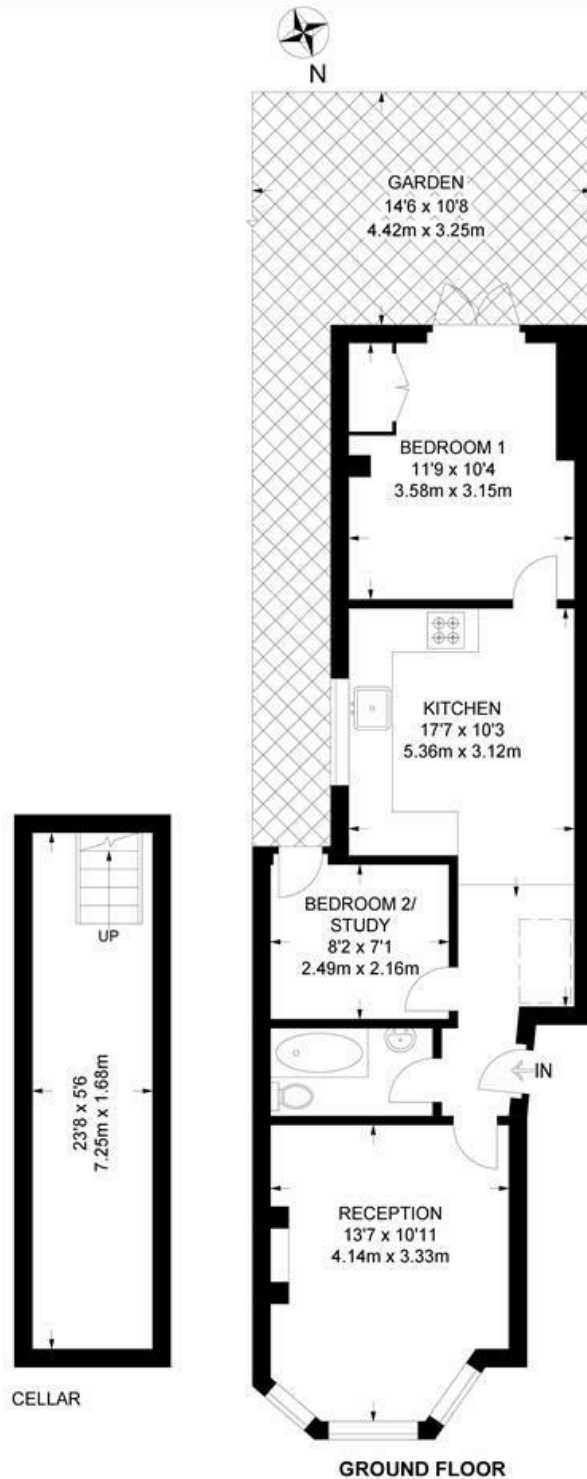
Hemberton Road, Clapham, SW9

Hemberton Road, SW9

2 Bedroom Flat

APPROXIMATE GROSS INTERNAL AREA WITH CELLAR: **665 SQ FT / 61.6 SQ M**

APPROXIMATE GROSS INTERNAL AREA WITHOUT CELLAR: **536 SQ FT / 49.5 SQ M**



While we try our very best, floor plans are produced as a guide only and we take no responsibility for the precise accuracy with which any property is represented.

Hemberton Road, Clapham, SW9

